



Semester End Feedback

Academic Year: 2022-23

COMPUTER SCIENCE & DESIGN

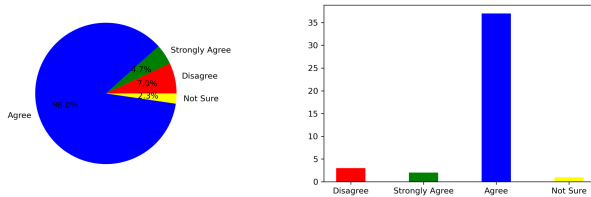
(First Year)

Feedback on Academics

Total No. of Students participated in the survey: 43

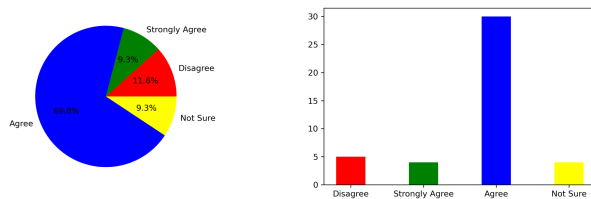
1. Did you acquire any new technical or scientific knowledge?

Strongly Agree [4] =0 Agree [3] =86.05% Disagree [2] =6.98% Not sure [1] =2.33%



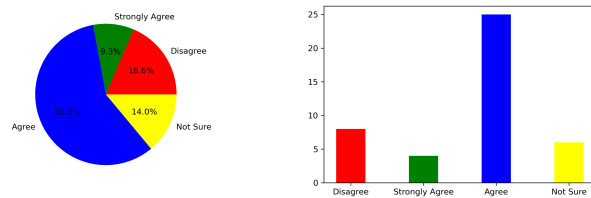
2. Are you able to apply the knowledge and skills you gained in real life problem solving?

Strongly Agree [4] =0 Agree [3] =69.77% Disagree [2] =11.63% Not sure [1] =9.3%



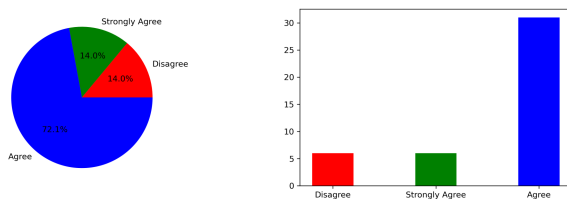
3. Are the subjects you studied relevant to the current industry need?

Strongly Agree [4] =0 Agree [3] =58.14% Disagree [2] =18.6% Not sure [1] =13.95%



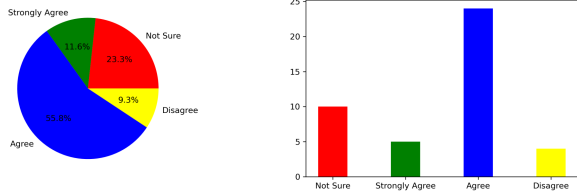
4. Availability and adequacy of modern tools in the laboratories?

Strongly Agree [4] =0 Agree [3] =72.09% Disagree [2] =13.95% Not sure [1] =0



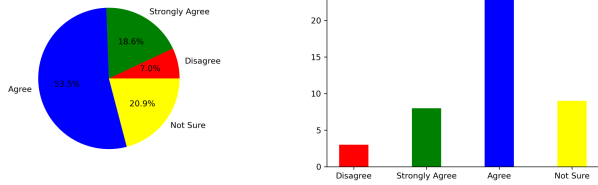
5. Are the experiments/practical prescribed in the subjects/courses helpful for your future?

Strongly Agree [4] =0 Agree [3] =55.81% Disagree [2] =9.3% Not sure [1] =23.26%



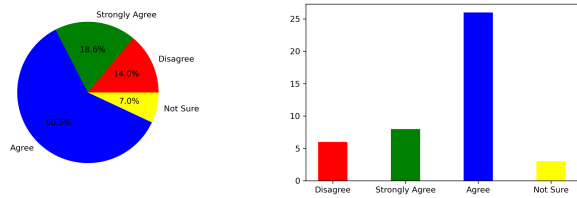
6. How is the mentorship and counselling process in the department?

Strongly Agree [4] =0 Agree [3] =53.49% Disagree [2] =6.98% Not sure [1] =20.93%



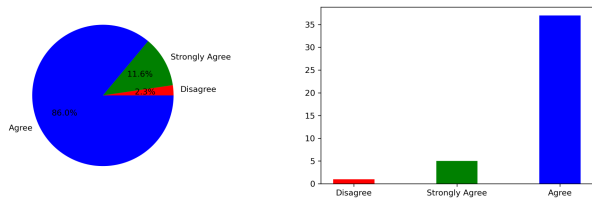
7. How is the overall learning environment?

Strongly Agree [4] =0 Agree [3] =60.47% Disagree [2] =13.95% Not sure [1] =6.98%



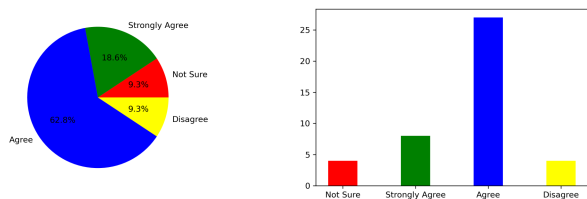
8. Did you improve your communication skill?

Strongly Agree [4] =0 Agree [3] =86.05% Disagree [2] =2.33% Not sure [1] =0



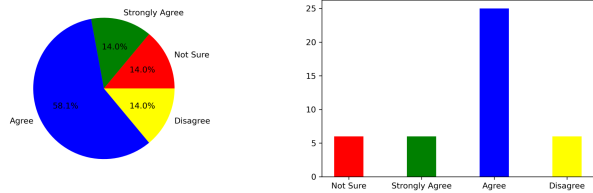
9. Are the teachers able to demonstrate the required knowledge and skills?

Strongly Agree [4] =0 Agree [3] =62.79% Disagree [2] =9.3% Not sure [1] =9.3%



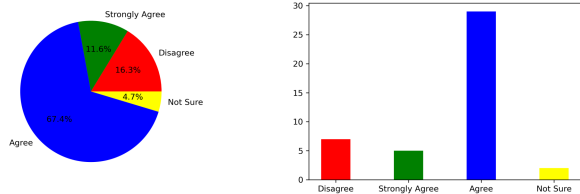
10. Is the pedagogy used by the teachers effective and interesting?

Strongly Agree [4] =0 Agree [3] =58.14% Disagree [2] =13.95% Not sure [1] =13.95%



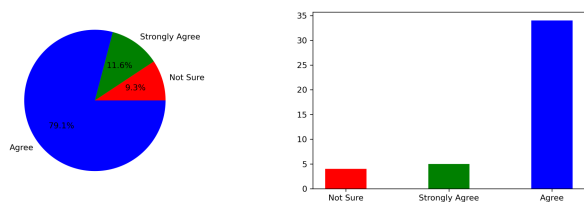
11. Are the opportunities provided for cocurricular and extracurricular activities?

Strongly Agree [4] =0 Agree [3] =67.44% Disagree [2] =16.28% Not sure [1] =4.65%



12. Are events (workshop/seminar/webinar etc.) conducted for the holistic development of the students and to bridge industry-academia gap?

Strongly Agree [4] =0 Agree [3] =79.07% Disagree [2] =0 Not sure [1] =9.3%



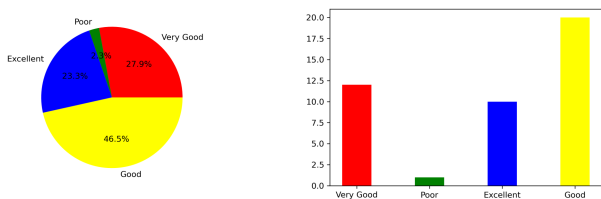
Summary

Strongly Agree: 0.0%
 Agree: 77.33%
 Disagree: 11.78%
 Not Sure: 10.89%

Feedback on Facilities

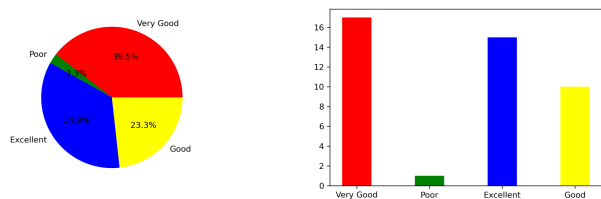
1. Laboratory facility

Excellent [4] =23.26% Very Good [3] =27.91% Good [2] =46.51% Poor [1] =2.33%



2. Library facility

Excellent [4] =34.88% Very Good [3] =39.53% Good [2] =23.26% Poor [1] =2.33%



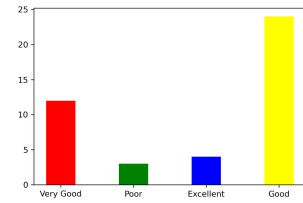
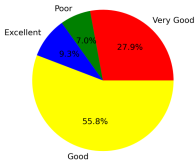
3. Hostel facility (if applicable)

Excellent [4] =9.3% Very Good [3] =44.19% Good [2] =27.91% Poor [1] =18.6%



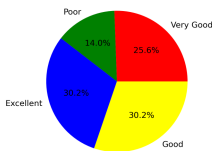
4. Sports facility

Excellent [4] =9.3% Very Good [3] =27.91% Good [2] =55.81% Poor [1] =6.98%



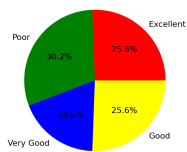
5. Water facility

Excellent [4] =30.23% Very Good [3] =25.58% Good [2] =30.23% Poor [1] =13.95%



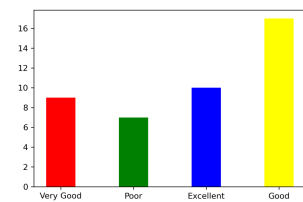
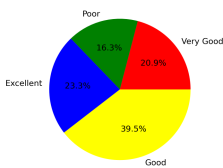
6. Cleanliness and Hygiene

Excellent [4] =25.58% Very Good [3] =18.6% Good [2] =25.58% Poor [1] =30.23%



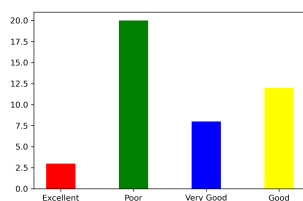
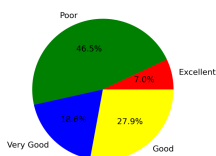
7. Canteen facility

Excellent [4] =23.26% Very Good [3] =20.93% Good [2] =39.53% Poor [1] =16.28%



8. Internet facility

Excellent [4] =6.98% Very Good [3] =18.6% Good [2] =27.91% Poor [1] =46.51%



Summary

Excellent: 20.35%
 Very Good: 27.91%
 Good: 34.59%
 Poor: 17.15%

This is a computer generated statement and does not require a signature.