

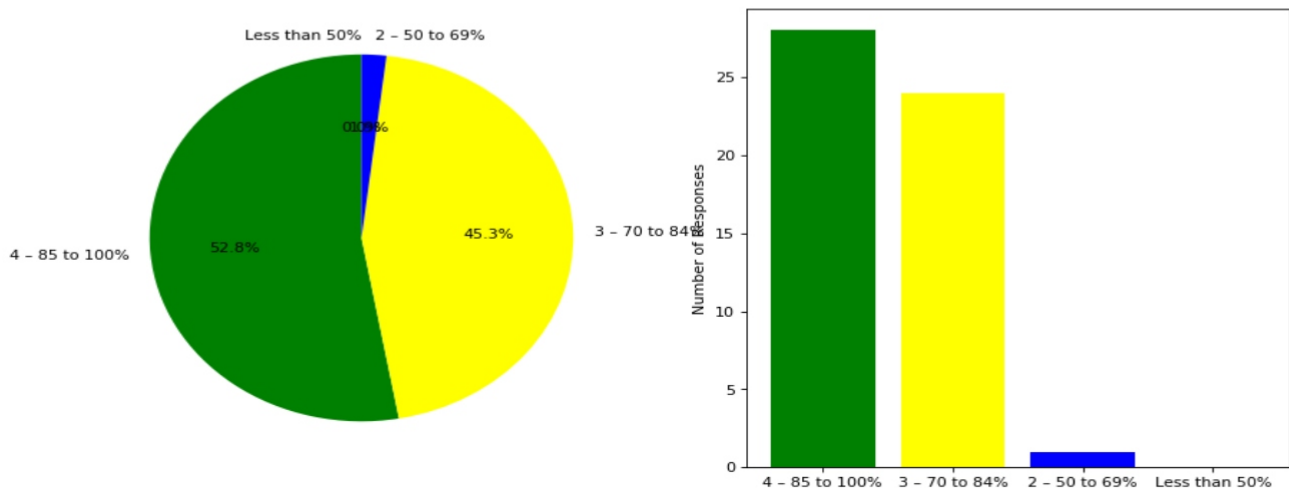


Semester End Survey  
Academic Year: 2024-25  
Department: MCA  
Semester: THIRD

Total number of students participated in the survey: 53

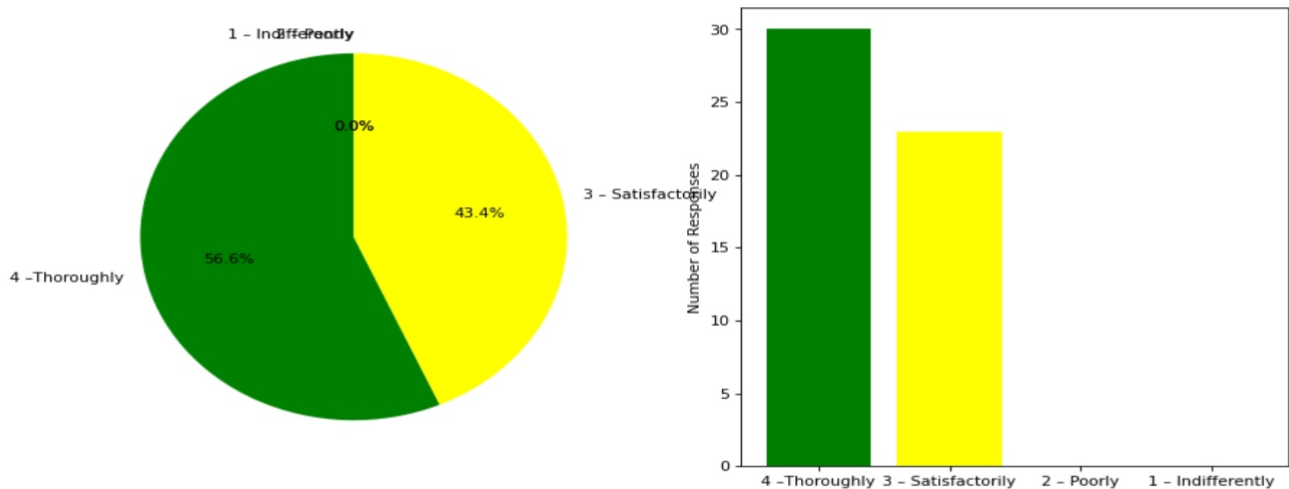
### 1. The overall syllabus coverage in the class is to an extent of

4 – 85 to 100%: [28] = (52.83%) 3 – 70 to 84%: [24] = (45.28%) 2 – 50 to 69%: [1] = (1.89%) Less than 50%: [0] = (0.0%)



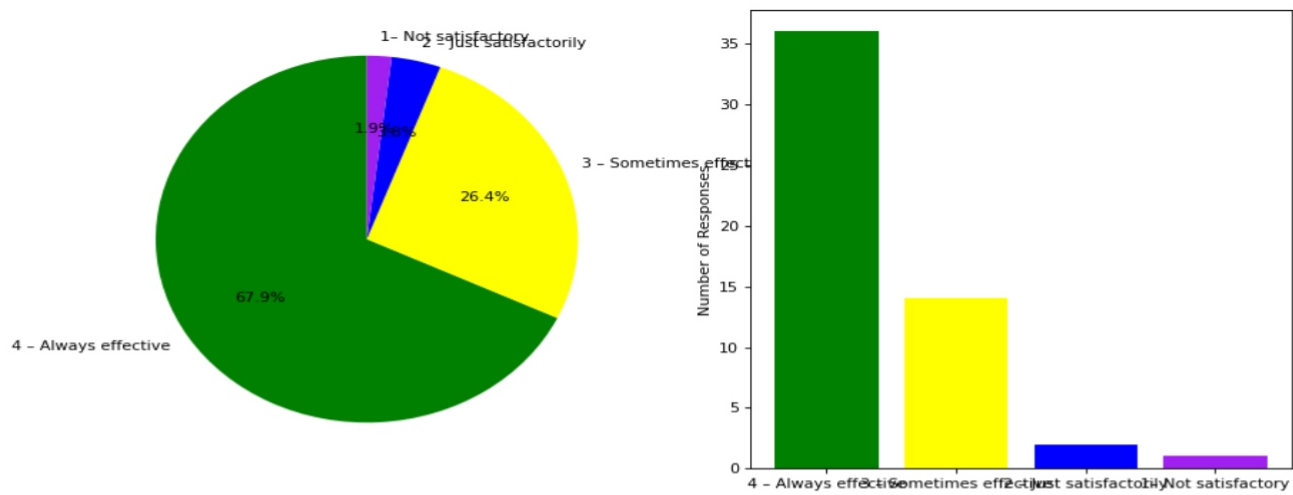
### 2. Teachers are prepared for the classes

4 –Thoroughly: [30] = (56.6%) 3 – Satisfactorily: [23] = (43.4%) 2 – Poorly: [0] = (0.0%) 1 – Indifferently: [0] = (0.0%)



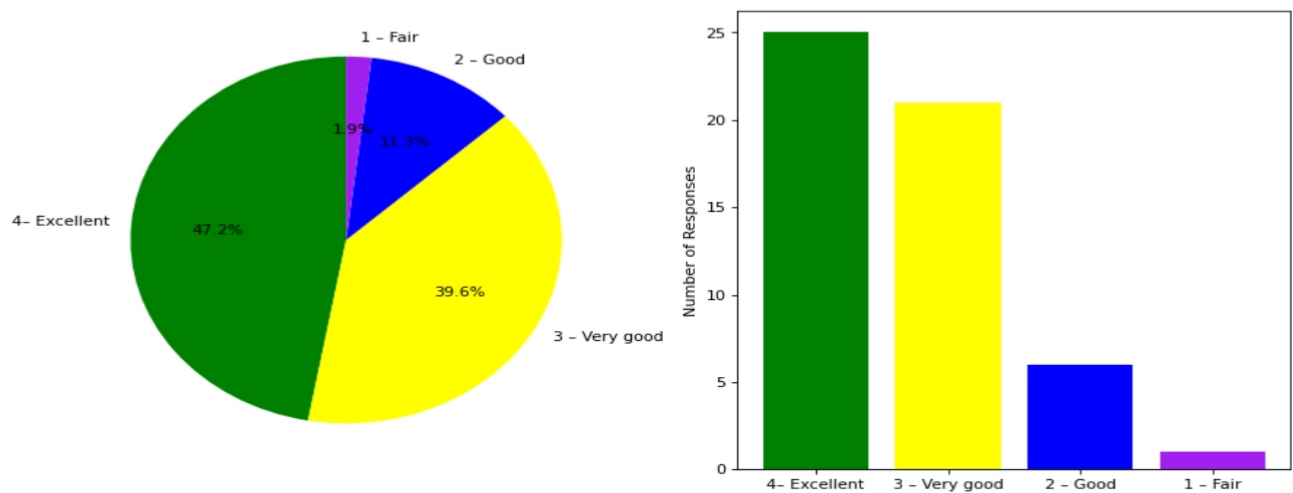
### 3. Communication of the teachers in the class and outside the class is

4 – Always effective: [36] = (67.92%) 3 – Sometimes effective: [14] = (26.42%) 2 – Just satisfactorily: [2] = (3.77%) 1 – Not satisfactory: [1] = (1.89%)



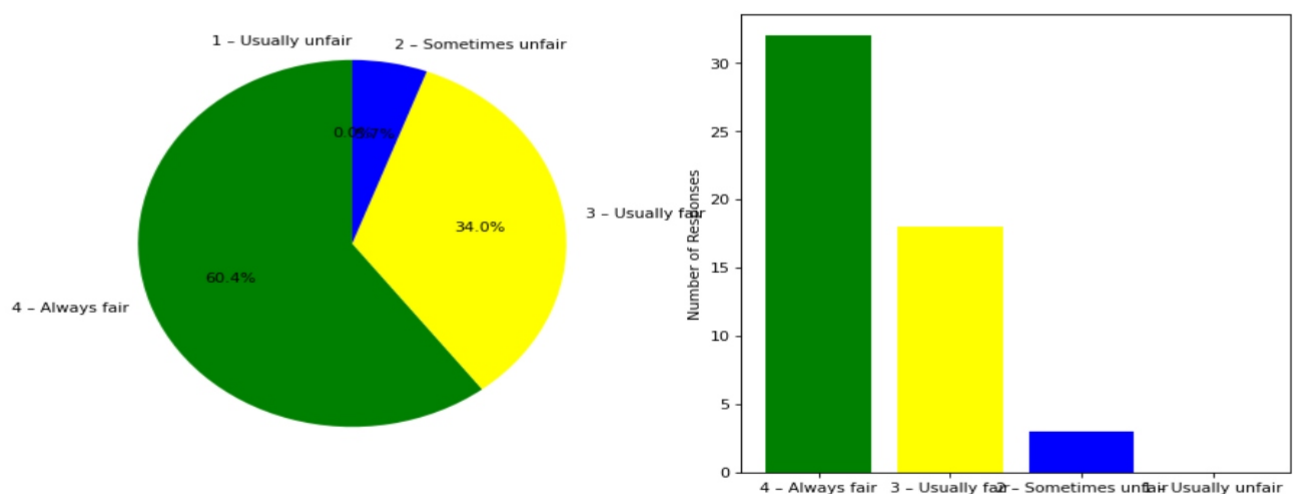
#### 4. Overall learning environment in the classes and laboratories is

4 - Excellent: [25] = (47.17%) 3 - Very good: [21] = (39.62%) 2 - Good: [6] = (11.32%) 1 - Fair: [1] = (1.89%)



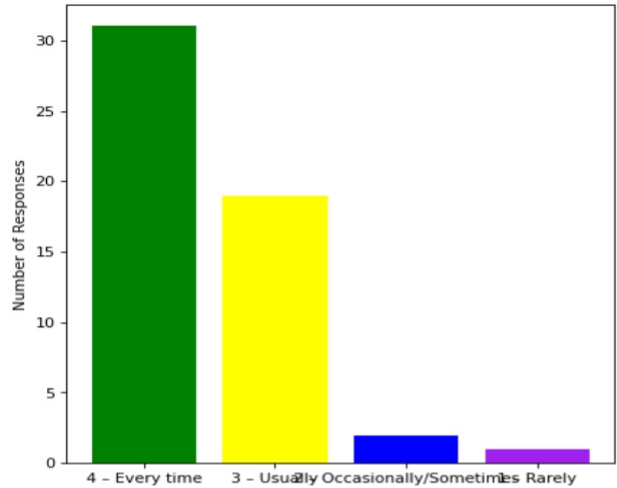
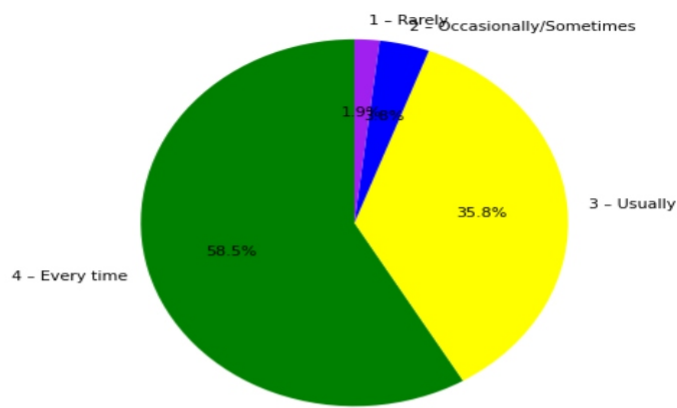
#### 5. Fairness of the internal evaluation process by the teachers is

4 - Always fair: [32] = (60.38%) 3 - Usually fair: [18] = (33.96%) 2 - Sometimes unfair: [3] = (5.66%) 1 - Usually unfair: [0] = (0.0%)



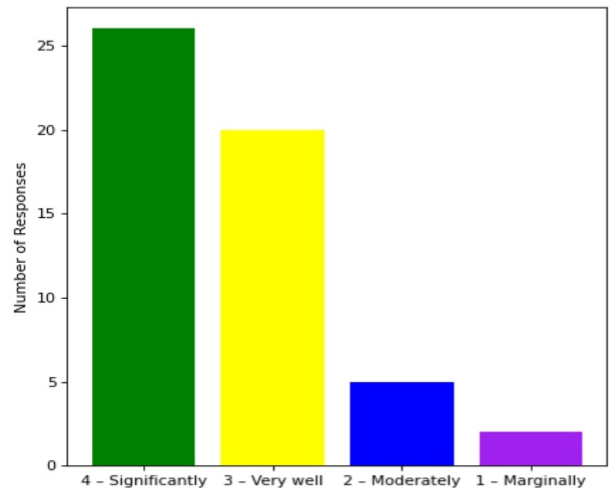
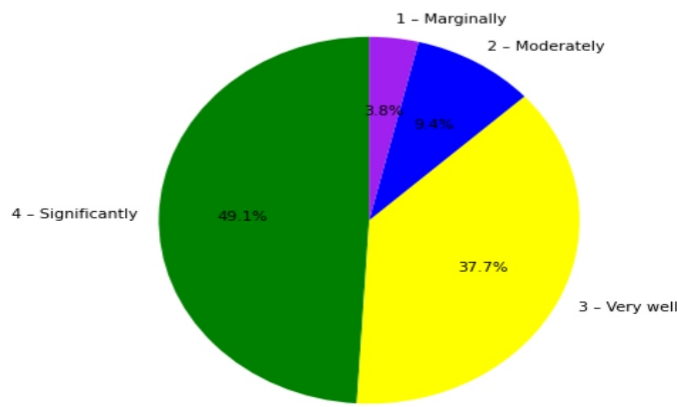
#### 6. The performance in internal evaluations and laboratory experimentation is discussed with the students

4 – Every time: [31] = (58.49%) 3 – Usually: [19] = (35.85%) 2 – Occasionally/Sometimes: [2] = (3.77%) 1 – Rarely: [1] = (1.89%)



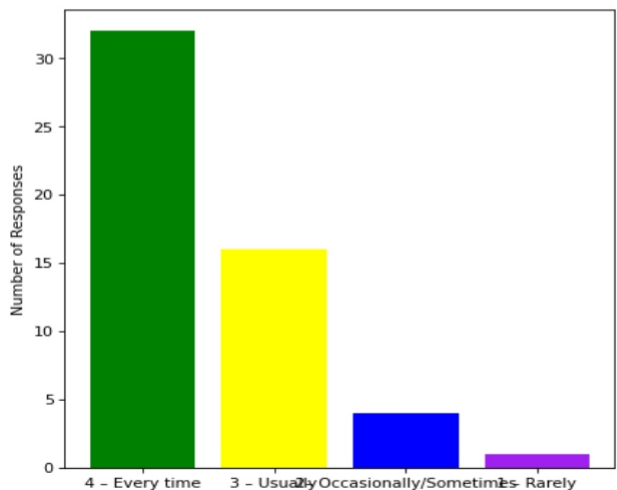
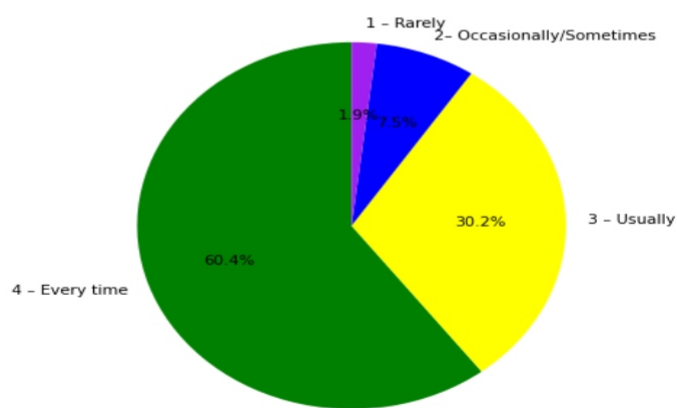
**7. The teaching and mentoring process in the department supports the development of your cognitive, social, and emotional growth**

4 – Significantly: [26] = (49.06%) 3 – Very well: [20] = (37.74%) 2 – Moderately: [5] = (9.43%) 1 – Marginally: [2] = (3.77%)



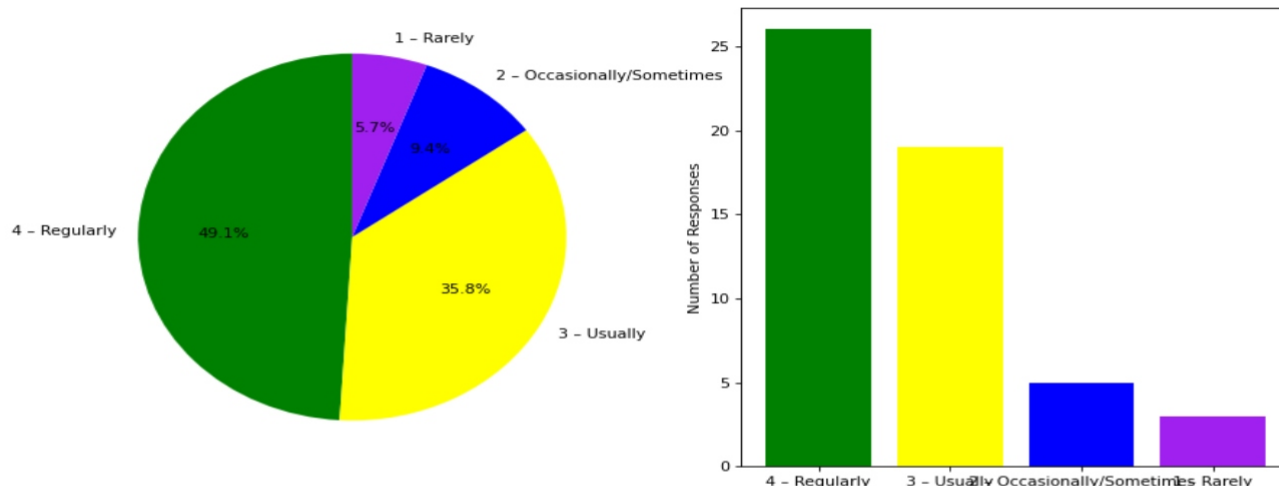
**8. Teachers inform students about expected competencies, course outcomes , programme outcomes and overall system of outcome based education(OBE)**

4 – Every time: [32] = (60.38%) 3 – Usually: [16] = (30.19%) 2– Occasionally/Sometimes: [4] = (7.55%) 1 – Rarely: [1] = (1.89%)



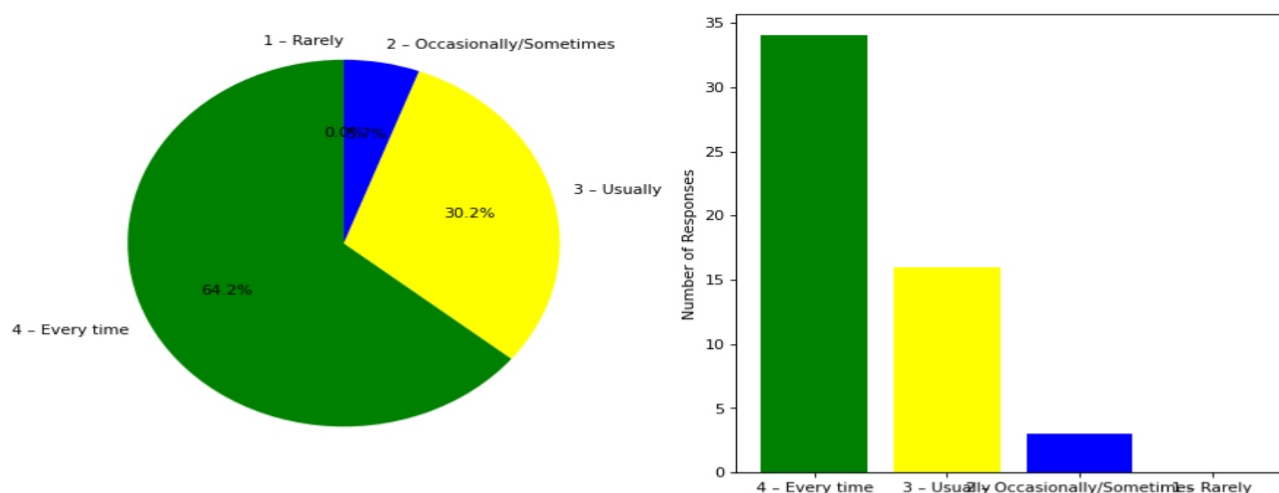
**9. Your mentor interacts with you to encourage on your strengths and counsel you to overcome your weakness by identifying them**

4 – Regularly: [26] = (49.06%) 3 – Usually: [19] = (35.85%) 2 – Occasionally/Sometimes: [5] = (9.43%) 1 – Rarely: [3] = (5.66%)



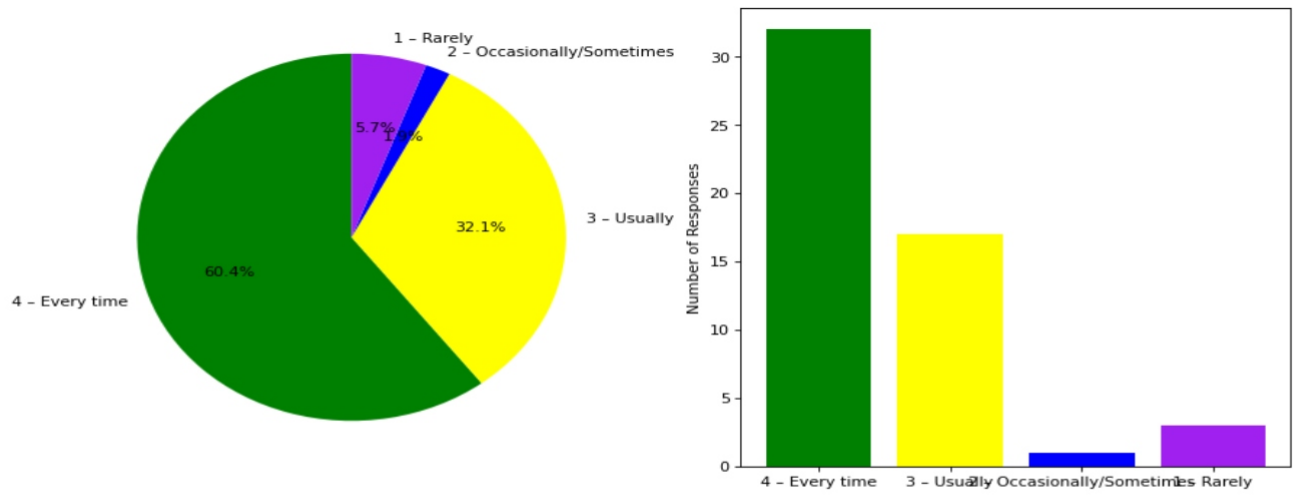
**10. The teachers illustrate the concepts through examples and applications and use student centric methods, such as experiential learning, participative learning and problem solving methodologies for enhancing learning experiences**

4 – Every time: [34] = (64.15%) 3 – Usually: [16] = (30.19%) 2 – Occasionally/Sometimes: [3] = (5.66%) 1 – Rarely: [0] = (0.0%)



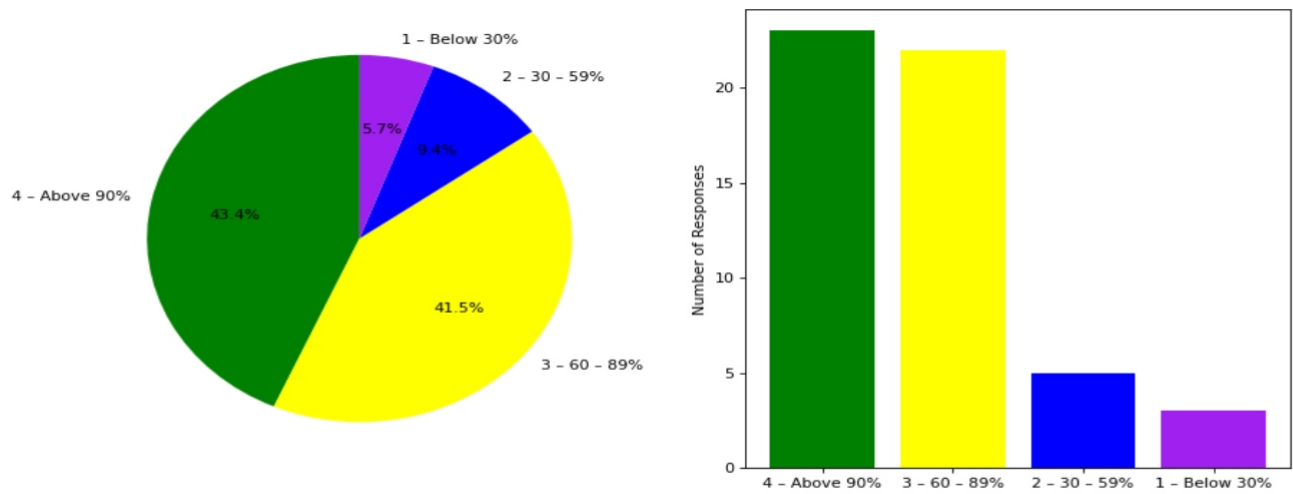
**11. The institute takes active interest in promoting internship, field visit, organizes workshop/seminar/extracurricular/co-curricular activities and helps to inculcate soft skills, life skills and employability skills for the holistic development of the students**

4 – Every time: [32] = (60.38%) 3 – Usually: [17] = (32.08%) 2 – Occasionally/Sometimes: [1] = (1.89%) 1 – Rarely: [3] = (5.66%)



**12. Percentage of teachers using ICT tools such as LCD projector, Multimedia, etc. while teaching**

4 – Above 90%: [23] = (43.4%) 3 – 60 – 89%: [22] = (41.51%) 2 – 30 – 59%: [5] = (9.43%) 1 – Below 30%: [3] = (5.66%)



This is a computer generated statement and does not require a signature.