

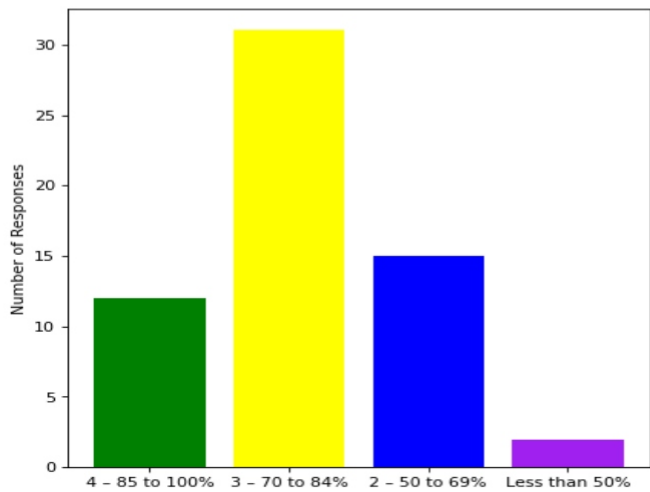
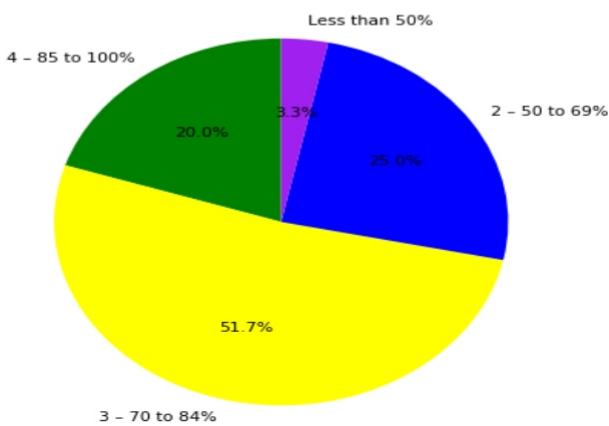


Semester End Survey
Academic Year: 2024-25
Department: EE
Semester: SEVENTH

Total number of students participated in the survey: 60

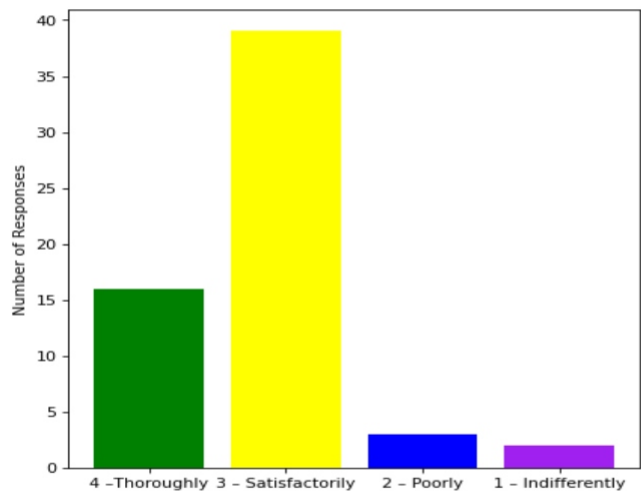
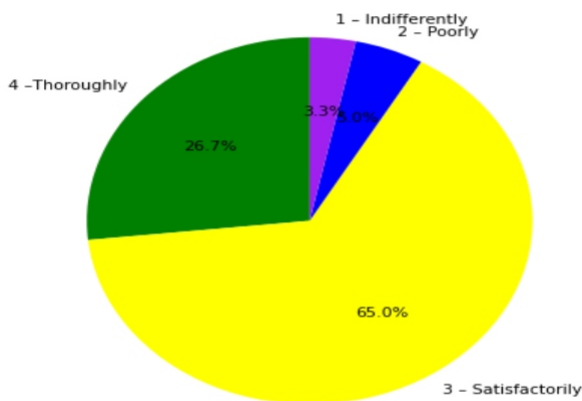
1. The overall syllabus coverage in the class is to an extent of

4 – 85 to 100%: [12] = (20.0%) 3 – 70 to 84%: [31] = (51.67%) 2 – 50 to 69%: [15] = (25.0%) Less than 50%: [2] = (3.33%)



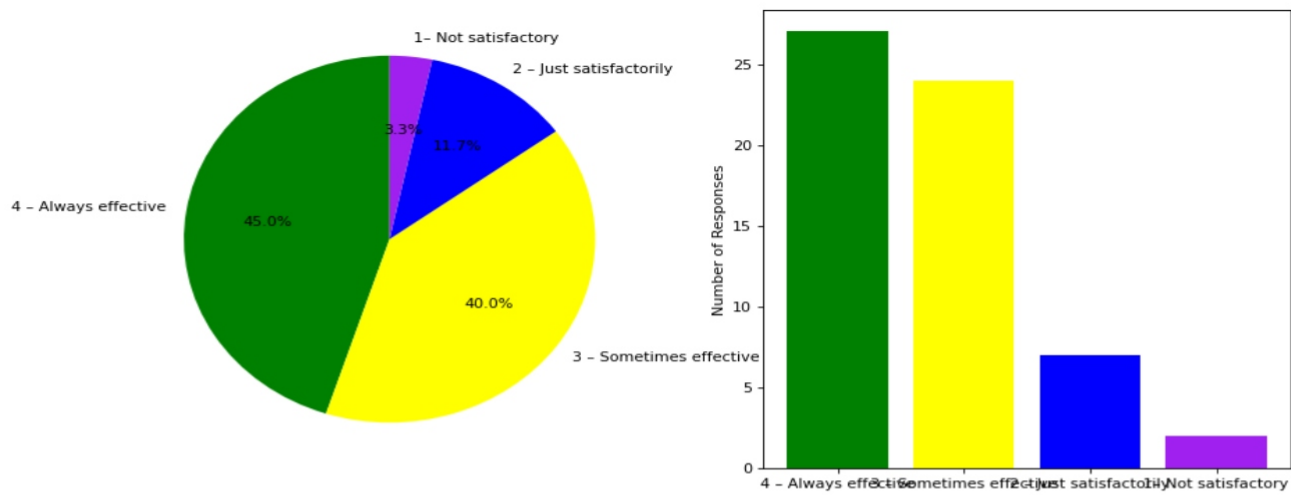
2. Teachers are prepared for the classes

4 –Thoroughly: [16] = (26.67%) 3 – Satisfactorily: [39] = (65.0%) 2 – Poorly: [3] = (5.0%) 1 – Indifferently: [2] = (3.33%)



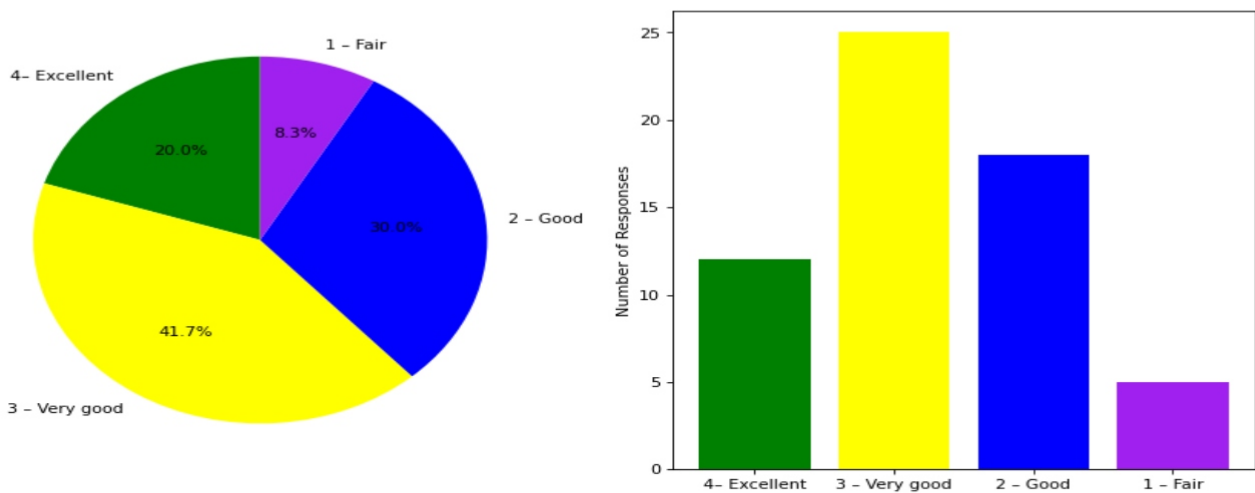
3. Communication of the teachers in the class and outside the class is

4 – Always effective: [27] = (45.0%) 3 – Sometimes effective: [24] = (40.0%) 2 – Just satisfactorily: [7] = (11.67%) 1 – Not satisfactory: [2] = (3.33%)



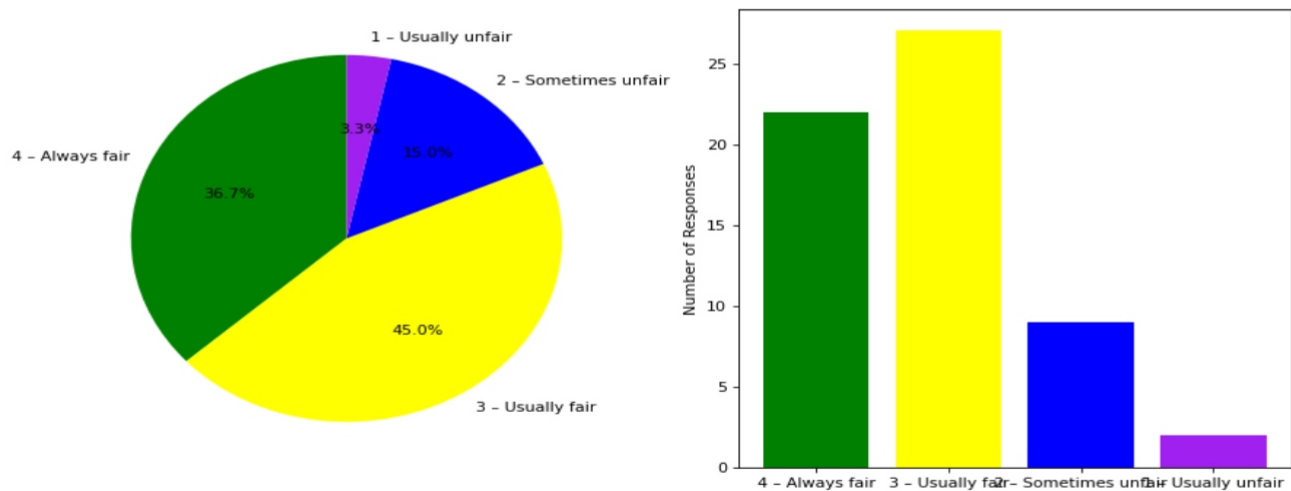
4. Overall learning environment in the classes and laboratories is

4- Excellent: [12] = (20.0%) 3 - Very good: [25] = (41.67%) 2 - Good: [18] = (30.0%) 1 - Fair: [5] = (8.33%)



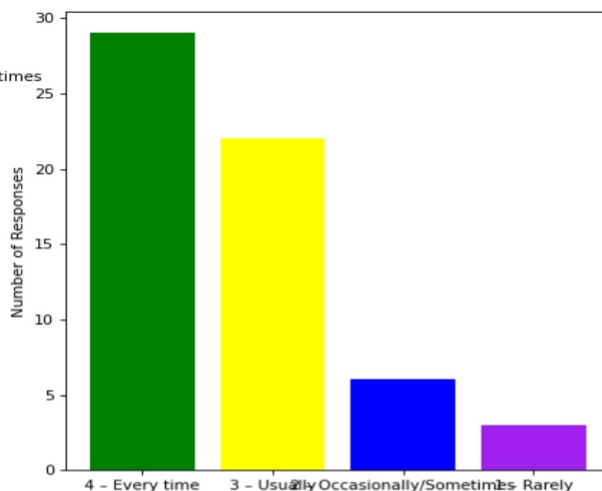
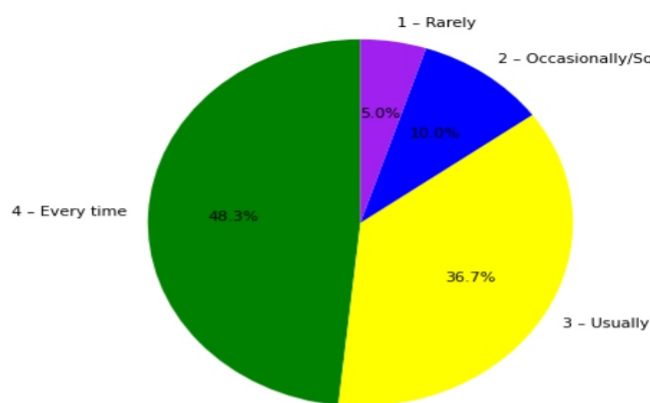
5. Fairness of the internal evaluation process by the teachers is

4 - Always fair: [22] = (36.67%) 3 - Usually fair: [27] = (45.0%) 2 - Sometimes unfair: [9] = (15.0%) 1 - Usually unfair: [2] = (3.33%)



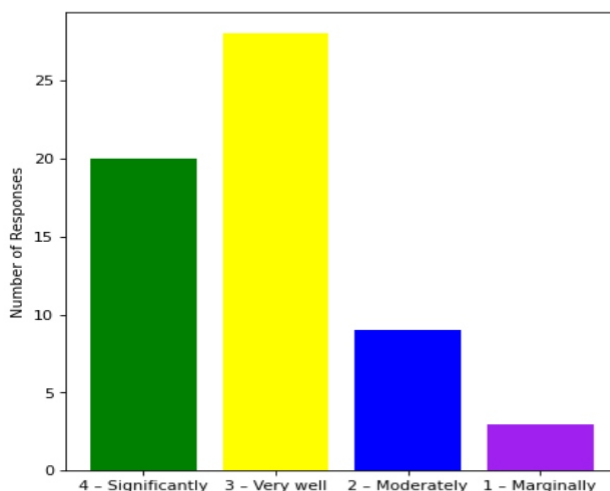
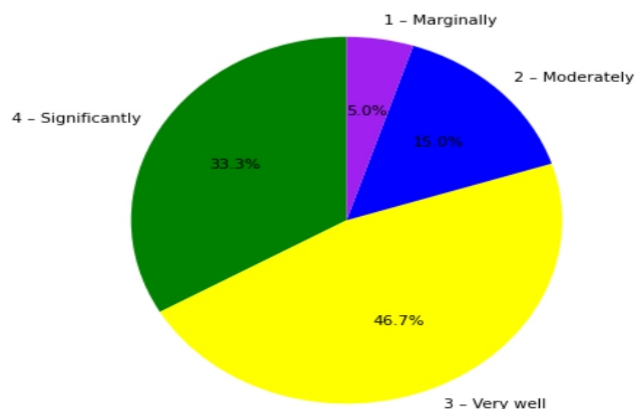
6. The performance in internal evaluations and laboratory experimentation is discussed with the students

4 – Every time: [29] = (48.33%) 3 – Usually: [22] = (36.67%) 2 – Occasionally/Sometimes: [6] = (10.0%) 1 – Rarely: [3] = (5.0%)



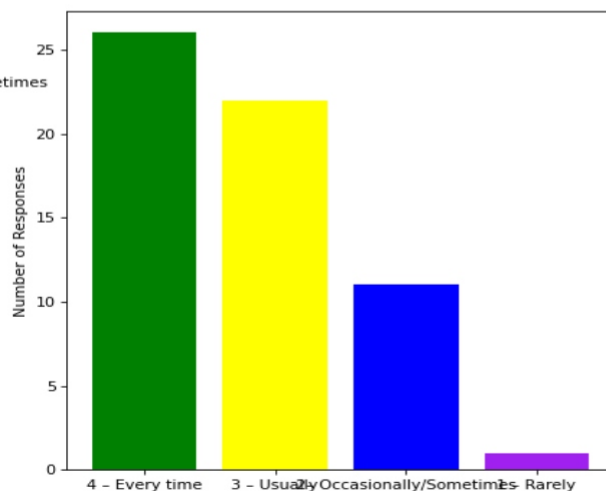
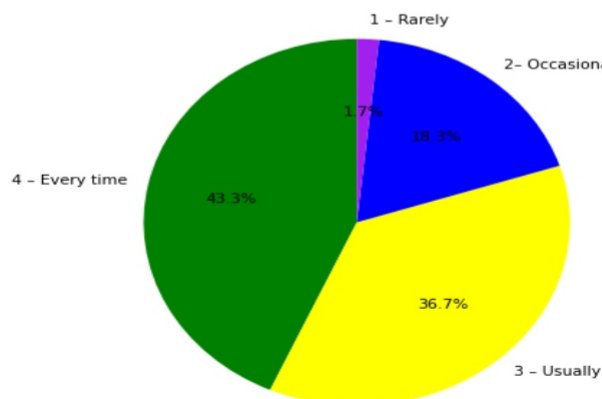
7. The teaching and mentoring process in the department supports the development of your cognitive, social, and emotional growth

4 – Significantly: [20] = (33.33%) 3 – Very well: [28] = (46.67%) 2 – Moderately: [9] = (15.0%) 1 – Marginally: [3] = (5.0%)



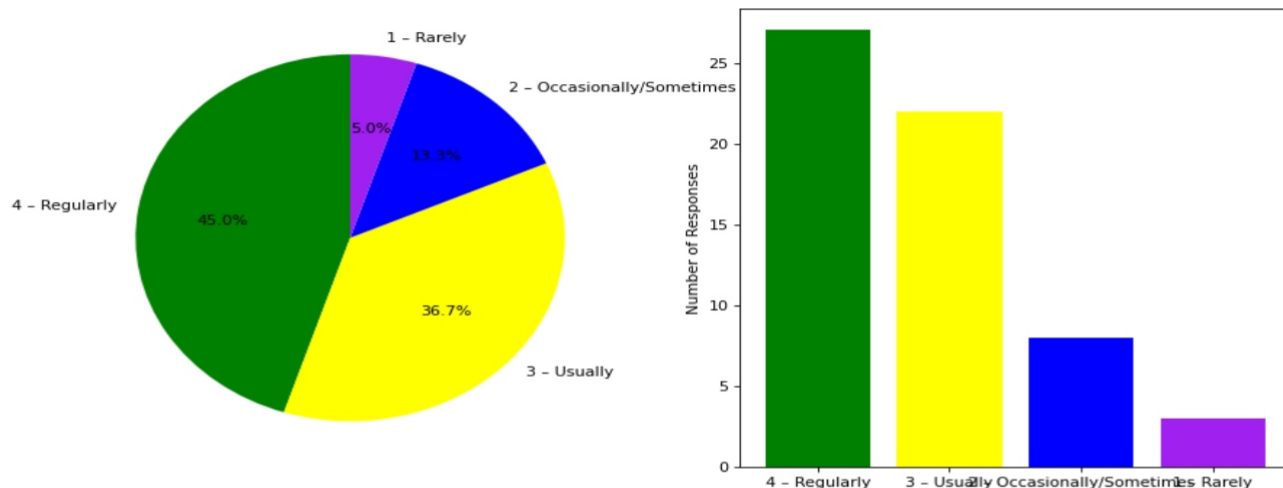
8. Teachers inform students about expected competencies, course outcomes, programme outcomes and overall system of outcome based education(OBE)

4 – Every time: [26] = (43.33%) 3 – Usually: [22] = (36.67%) 2 – Occasionally/Sometimes: [11] = (18.33%) 1 – Rarely: [1] = (1.67%)



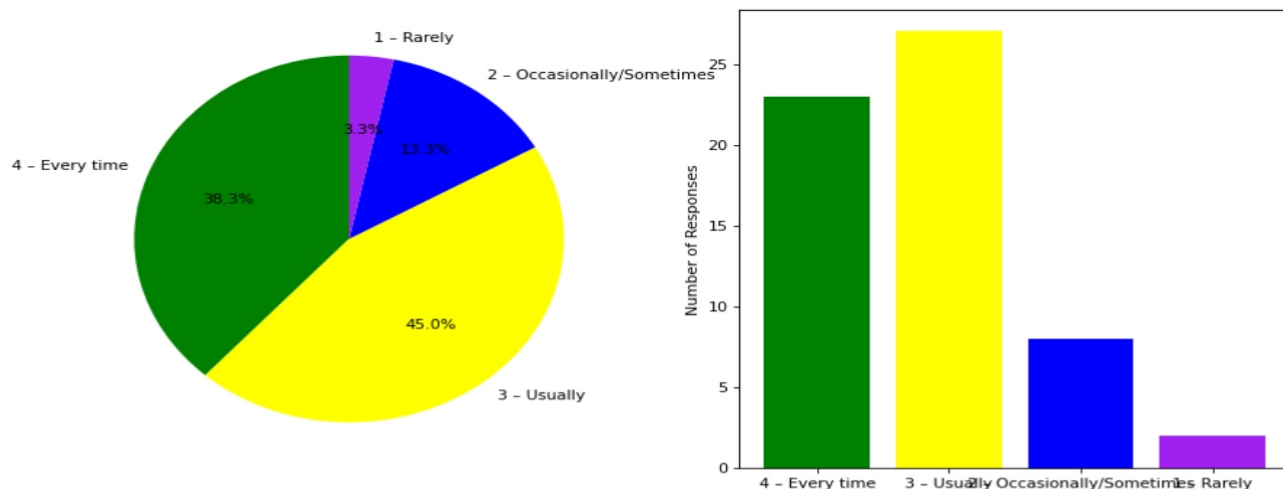
9. Your mentor interacts with you to encourage on your strengths and counsel you to overcome your weakness by identifying them

4 – Regularly: [27] = (45.0%) 3 – Usually: [22] = (36.67%) 2 – Occasionally/Sometimes: [8] = (13.33%) 1 – Rarely: [3] = (5.0%)



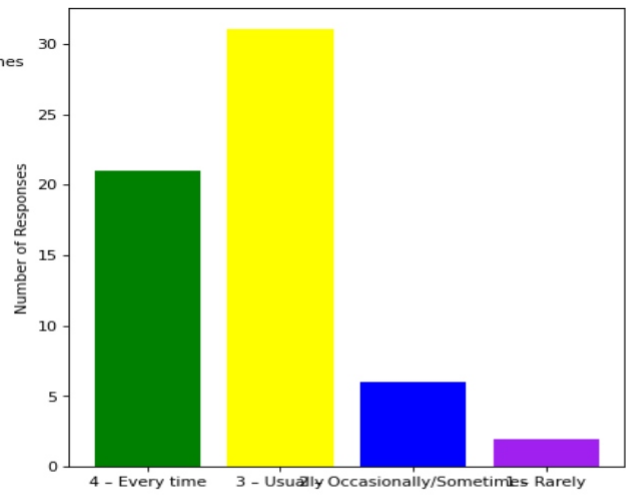
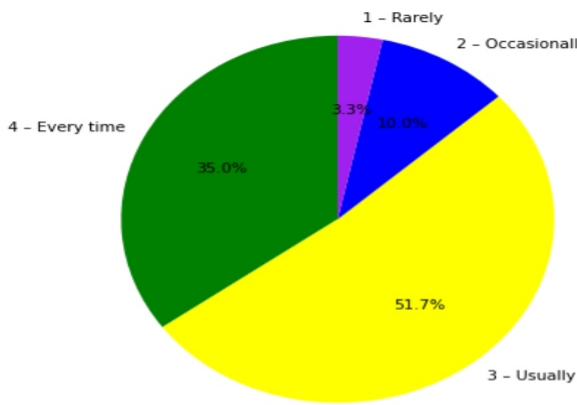
10. The teachers illustrate the concepts through examples and applications and use student centric methods, such as experiential learning, participative learning and problem solving methodologies for enhancing learning experiences

4 – Every time: [23] = (38.33%) 3 – Usually: [27] = (45.0%) 2 – Occasionally/Sometimes: [8] = (13.33%) 1 – Rarely: [2] = (3.33%)



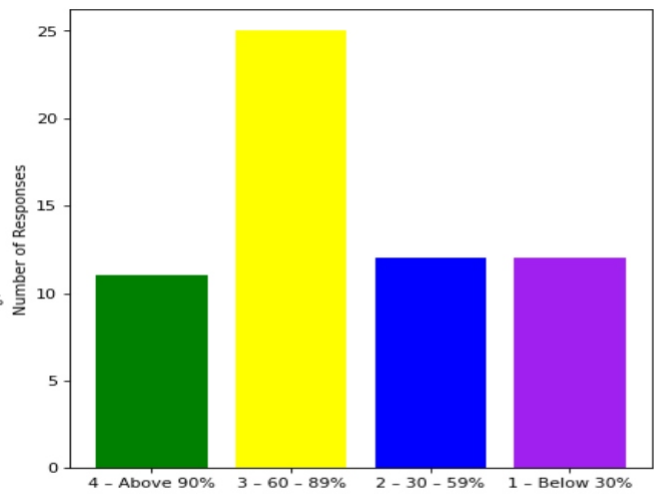
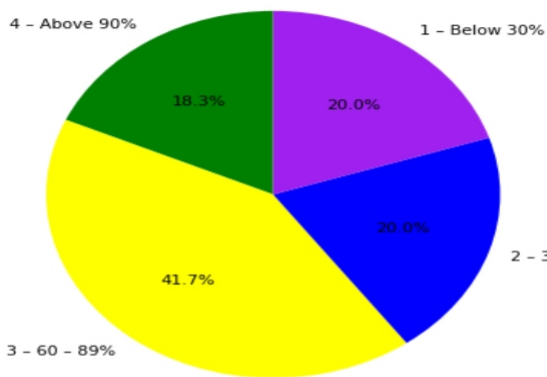
11. The institute takes active interest in promoting internship, field visit, organizes workshop/seminar/extracurricular/co-curricular activities and helps to inculcate soft skills, life skills and employability skills for the holistic development of the students

4 – Every time: [21] = (35.0%) 3 – Usually: [31] = (51.67%) 2 – Occasionally/Sometimes: [6] = (10.0%) 1 – Rarely: [2] = (3.33%)



12. Percentage of teachers using ICT tools such as LCD projector, Multimedia, etc. while teaching

4 - Above 90%: [11] = (18.33%) 3 - 60 - 89%: [25] = (41.67%) 2 - 30 - 59%: [12] = (20.0%) 1 - Below 30%: [12] = (20.0%)



This is a computer generated statement and does not require a signature.