

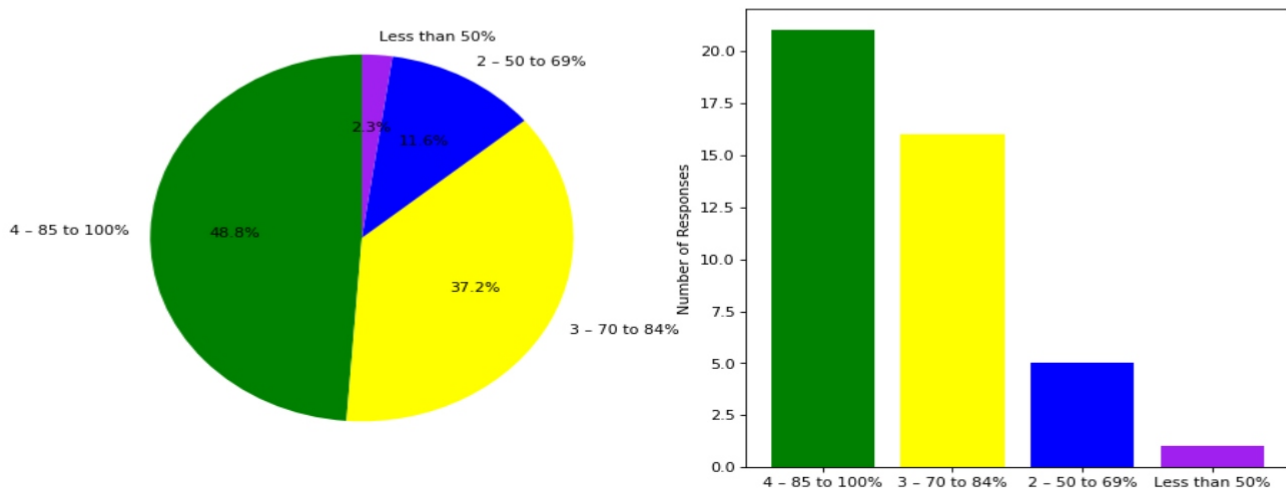


Semester End Survey
Academic Year: 2024-25
Department: CSE (DS)
Semester: SEVENTH

Total number of students participated in the survey: 43

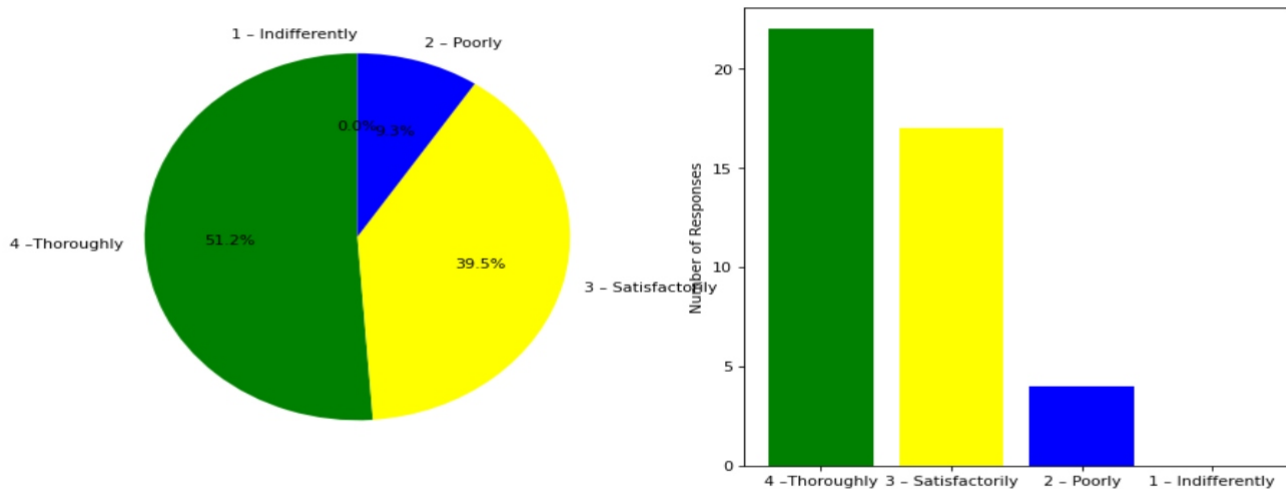
1. The overall syllabus coverage in the class is to an extent of

4 – 85 to 100%: [21] = (48.84%) 3 – 70 to 84%: [16] = (37.21%) 2 – 50 to 69%: [5] = (11.63%) Less than 50%: [1] = (2.33%)



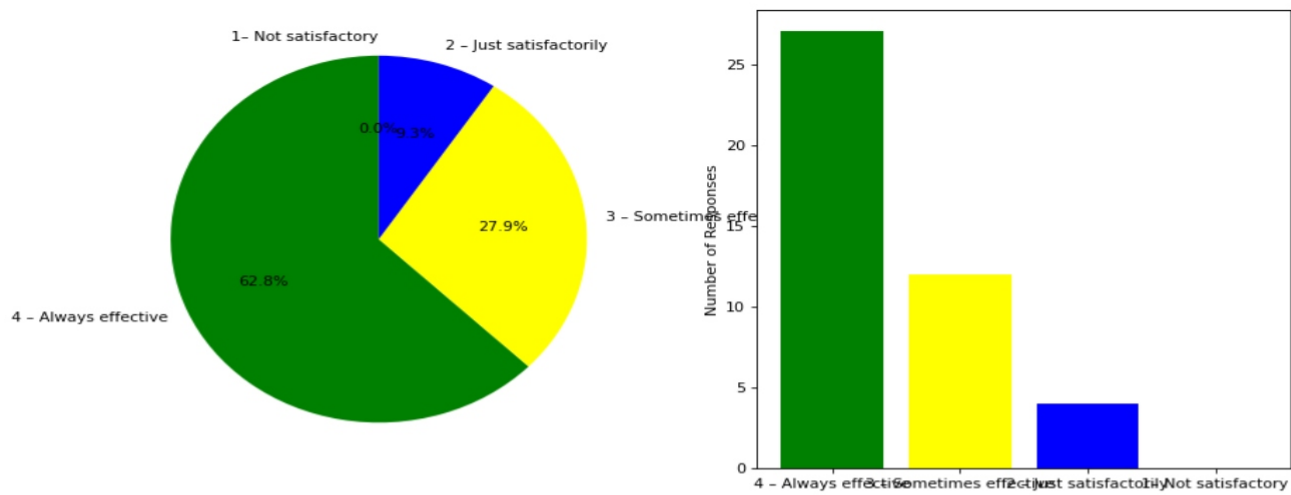
2. Teachers are prepared for the classes

4 –Thoroughly: [22] = (51.16%) 3 – Satisfactorily: [17] = (39.53%) 2 – Poorly: [4] = (9.3%) 1 – Indifferently: [0] = (0.0%)



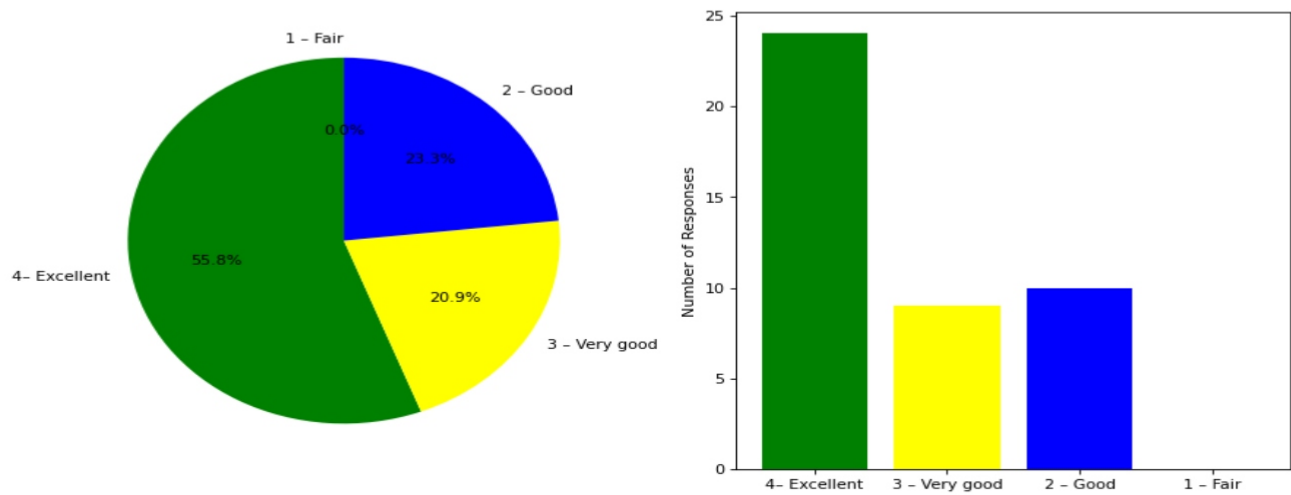
3. Communication of the teachers in the class and outside the class is

4 – Always effective: [27] = (62.79%) 3 – Sometimes effective: [12] = (27.91%) 2 – Just satisfactorily: [4] = (9.3%) 1 – Not satisfactory: [0] = (0.0%)



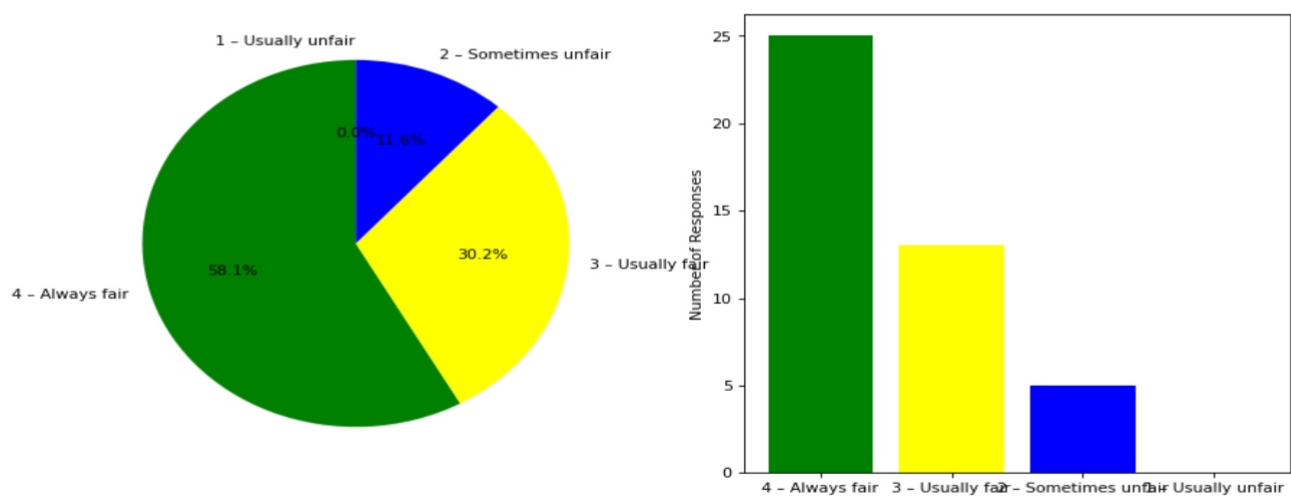
4. Overall learning environment in the classes and laboratories is

4 - Excellent: [24] = (55.81%) 3 - Very good: [9] = (20.93%) 2 - Good: [10] = (23.26%) 1 - Fair: [0] = (0.0%)



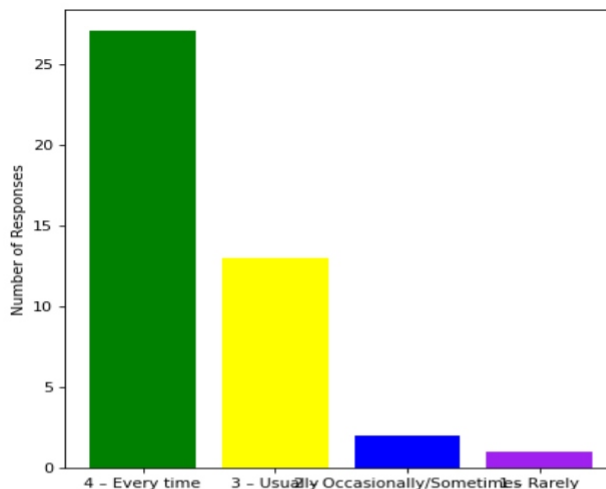
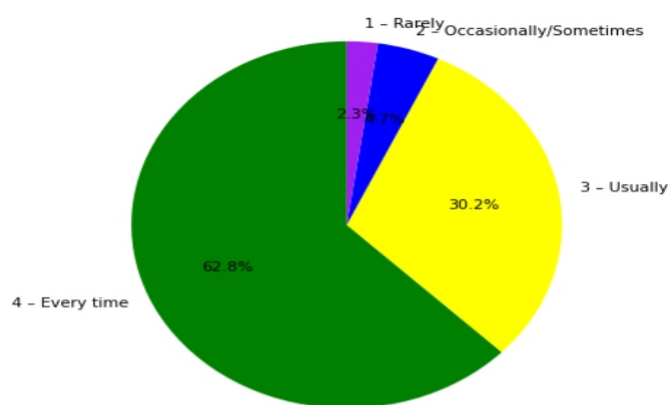
5. Fairness of the internal evaluation process by the teachers is

4 - Always fair: [25] = (58.14%) 3 - Usually fair: [13] = (30.23%) 2 - Sometimes unfair: [5] = (11.63%) 1 - Usually unfair: [0] = (0.0%)



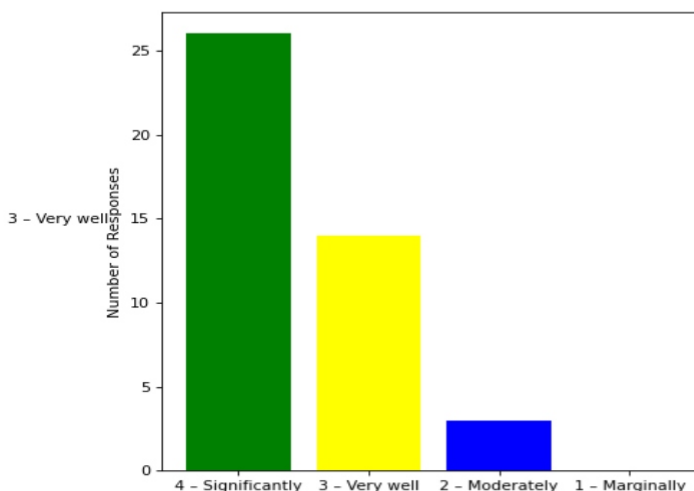
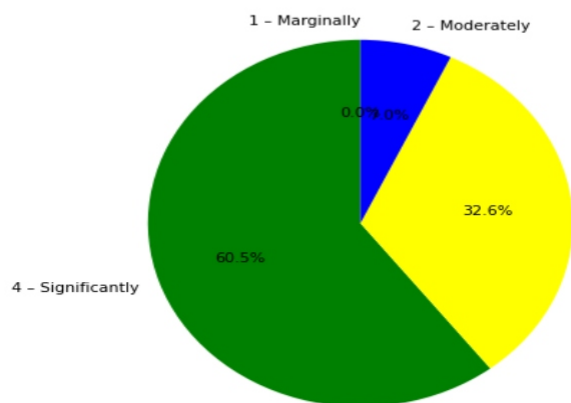
6. The performance in internal evaluations and laboratory experimentation is discussed with the students

4 – Every time: [27] = (62.79%) 3 – Usually: [13] = (30.23%) 2 – Occasionally/Sometimes: [2] = (4.65%) 1 – Rarely: [1] = (2.33%)



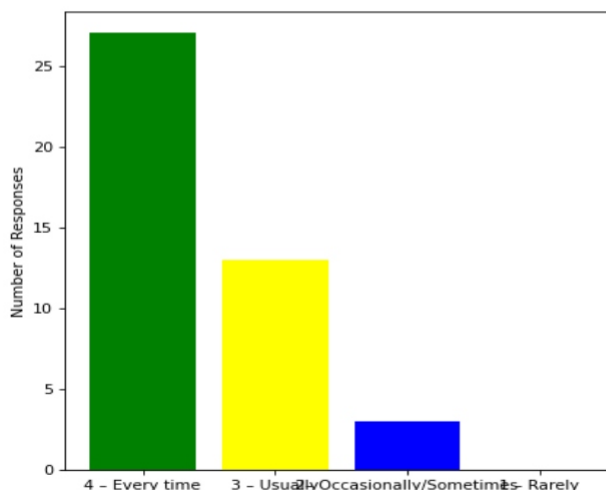
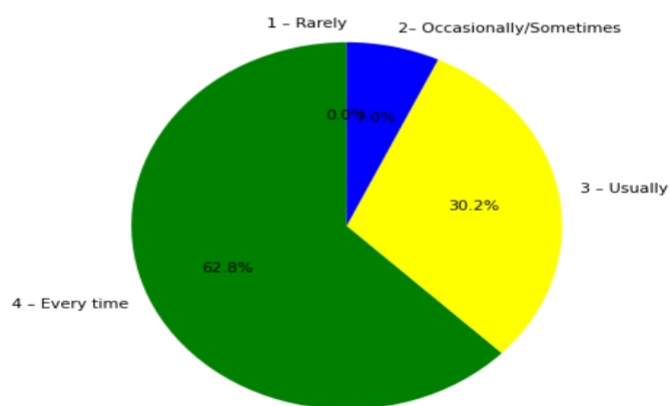
7. The teaching and mentoring process in the department supports the development of your cognitive, social, and emotional growth

4 – Significantly: [26] = (60.47%) 3 – Very well: [14] = (32.56%) 2 – Moderately: [3] = (6.98%) 1 – Marginally: [0] = (0.0%)



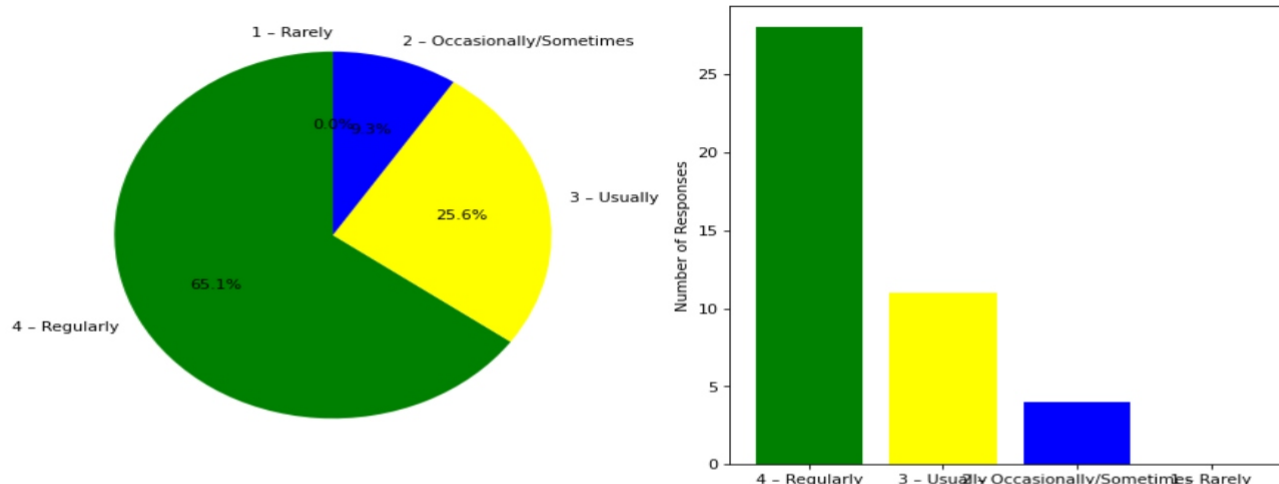
8. Teachers inform students about expected competencies, course outcomes, programme outcomes and overall system of outcome based education(OBE)

4 – Every time: [27] = (62.79%) 3 – Usually: [13] = (30.23%) 2 – Occasionally/Sometimes: [3] = (6.98%) 1 – Rarely: [0] = (0.0%)



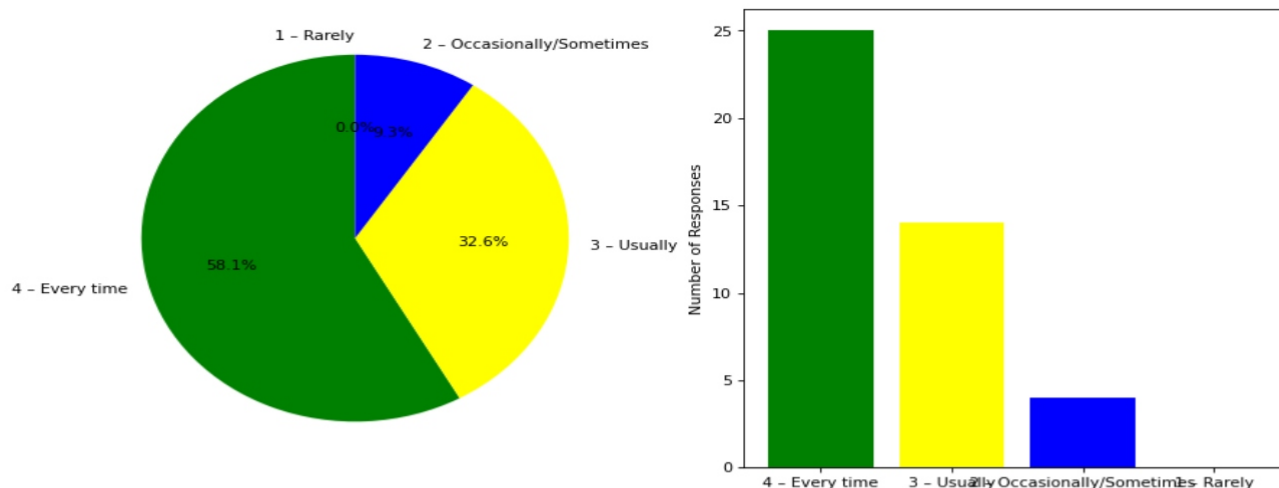
9. Your mentor interacts with you to encourage on your strengths and counsel you to overcome your weakness by identifying them

4 – Regularly: [28] = (65.12%) 3 – Usually: [11] = (25.58%) 2 – Occasionally/Sometimes: [4] = (9.3%) 1 – Rarely: [0] = (0.0%)



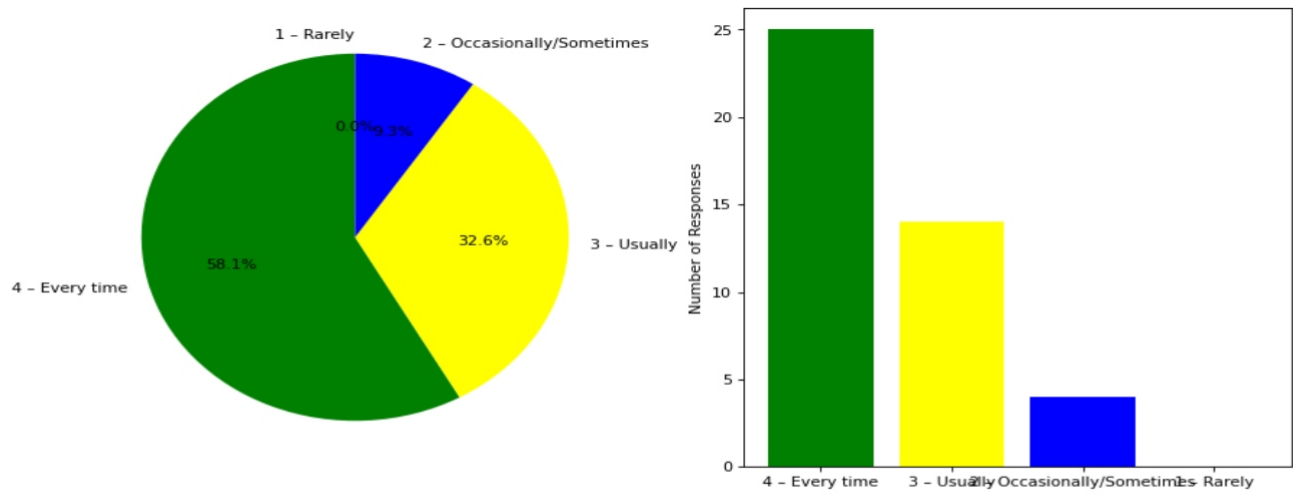
10. The teachers illustrate the concepts through examples and applications and use student centric methods, such as experiential learning, participative learning and problem solving methodologies for enhancing learning experiences

4 – Every time: [25] = (58.14%) 3 – Usually: [14] = (32.56%) 2 – Occasionally/Sometimes: [4] = (9.3%) 1 – Rarely: [0] = (0.0%)



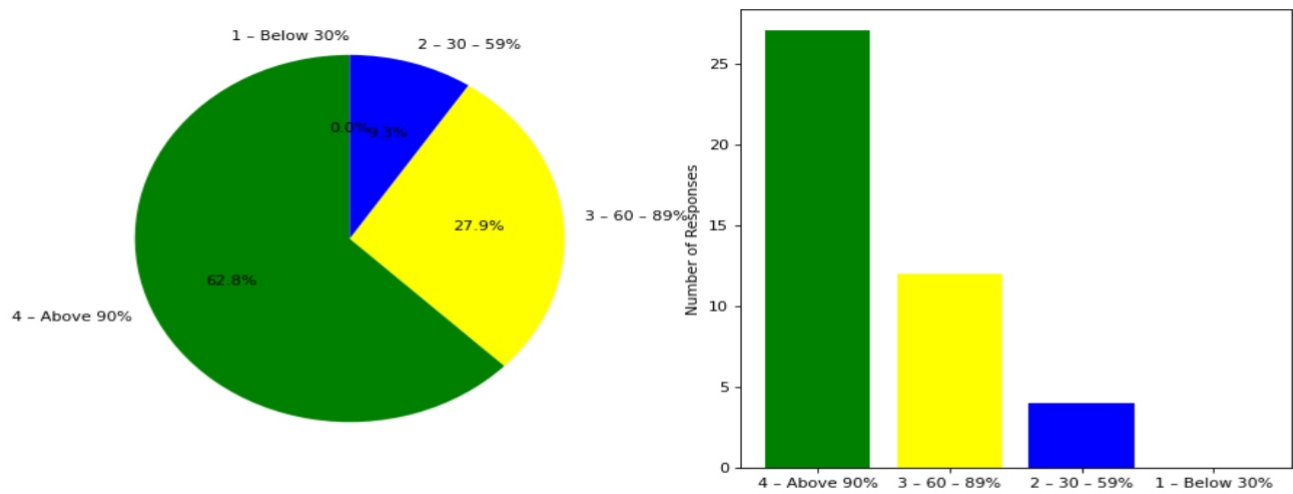
11. The institute takes active interest in promoting internship, field visit, organizes workshop/seminar/extracurricular/co-curricular activities and helps to inculcate soft skills, life skills and employability skills for the holistic development of the students

4 – Every time: [25] = (58.14%) 3 – Usually: [14] = (32.56%) 2 – Occasionally/Sometimes: [4] = (9.3%) 1 – Rarely: [0] = (0.0%)



12. Percentage of teachers using ICT tools such as LCD projector, Multimedia, etc. while teaching

4 - Above 90%: [27] = (62.79%) 3 - 60 - 89%: [12] = (27.91%) 2 - 30 - 59%: [4] = (9.3%) 1 - Below 30%: [0] = (0.0%)



This is a computer generated statement and does not require a signature.