

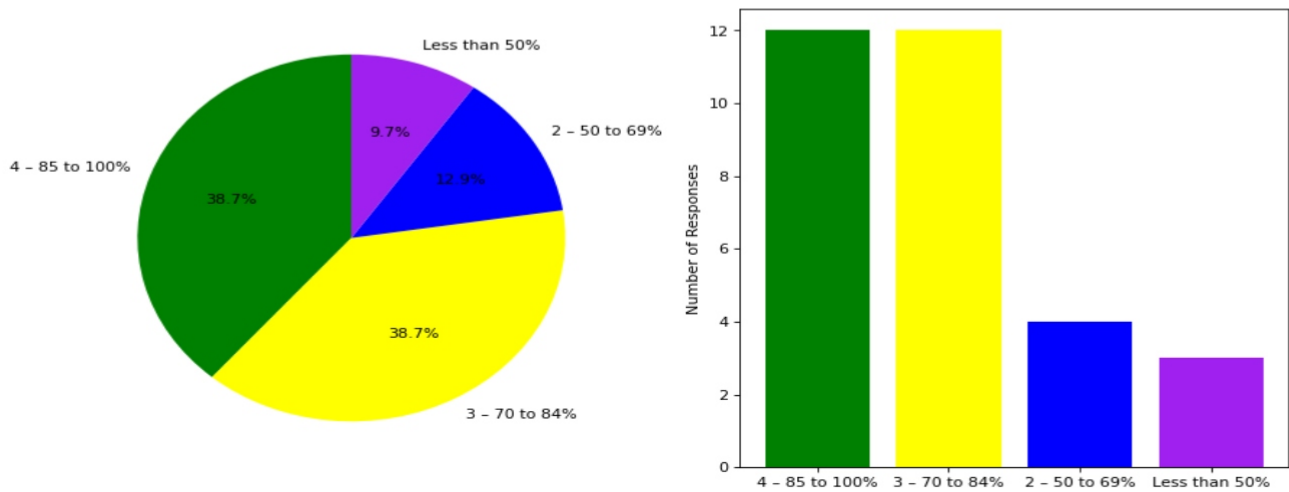


Semester End Survey  
Academic Year: 2024-25  
Department: CSD  
Semester: SEVENTH

Total number of students participated in the survey: 31

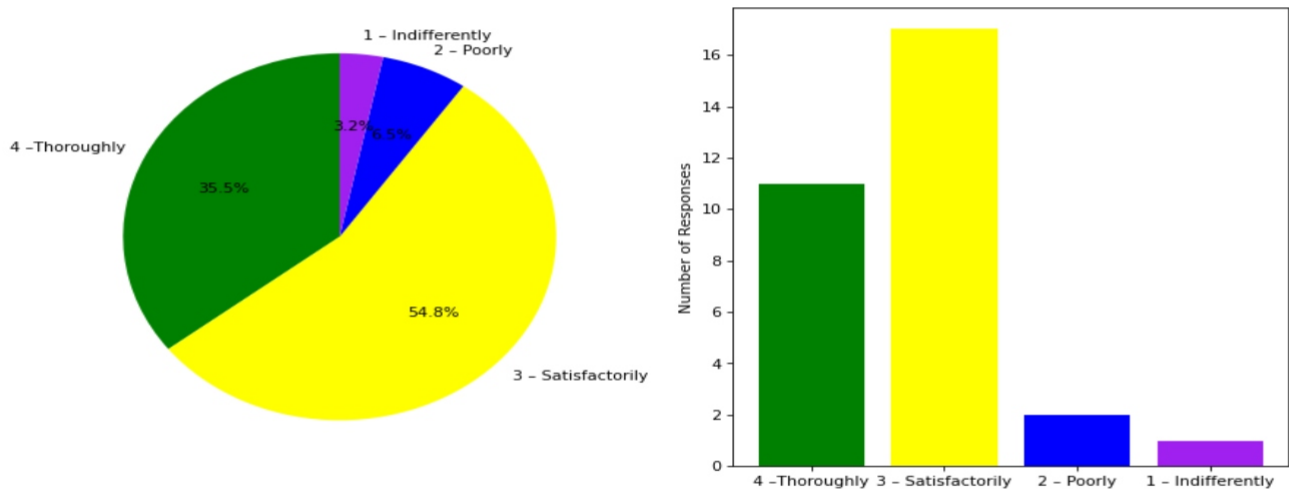
### 1. The overall syllabus coverage in the class is to an extent of

4 – 85 to 100%: [12] = (38.71%) 3 – 70 to 84%: [12] = (38.71%) 2 – 50 to 69%: [4] = (12.9%) Less than 50%: [3] = (9.68%)



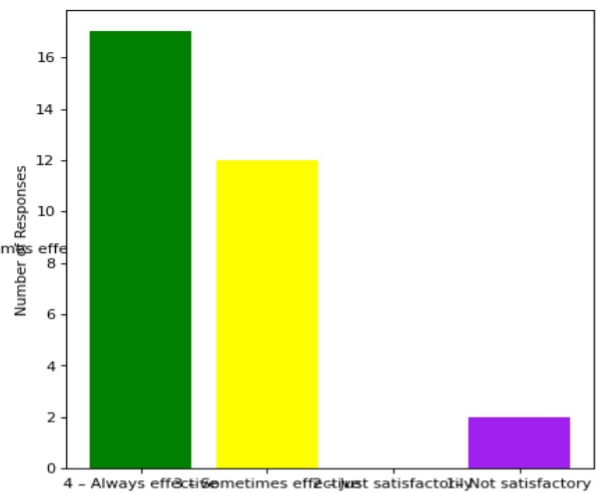
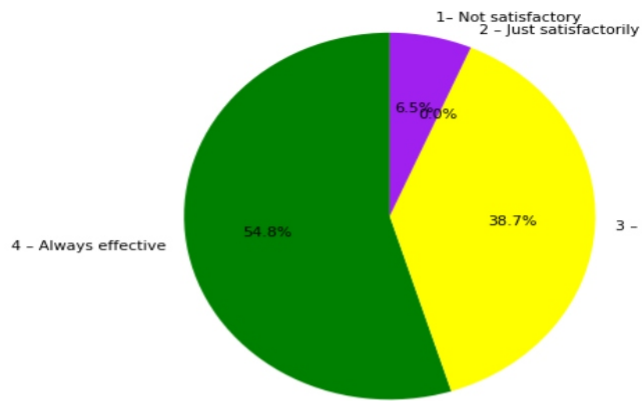
### 2. Teachers are prepared for the classes

4 –Thoroughly: [11] = (35.48%) 3 – Satisfactorily: [17] = (54.84%) 2 – Poorly: [2] = (6.45%) 1 – Indifferently: [1] = (3.23%)



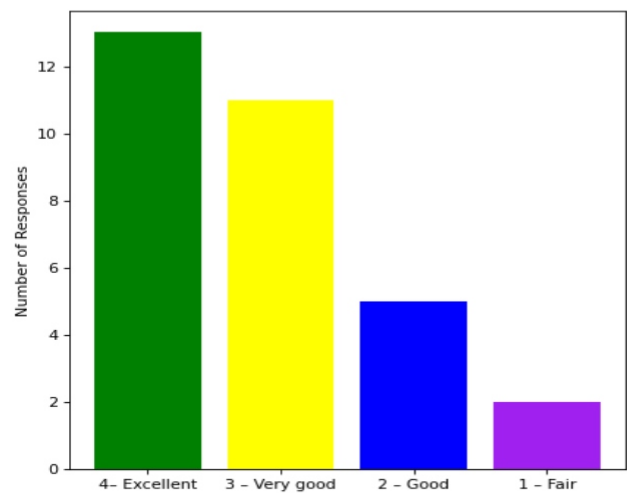
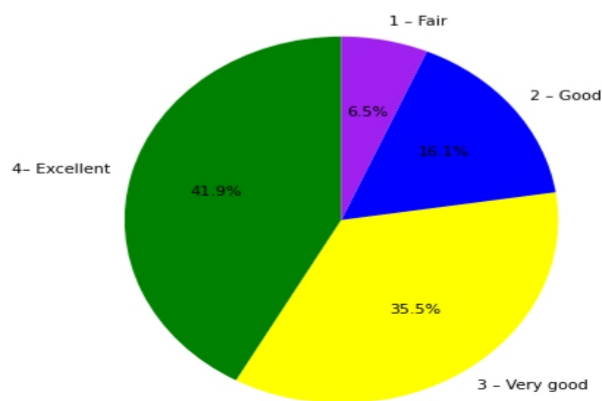
### 3. Communication of the teachers in the class and outside the class is

4 – Always effective: [17] = (54.84%) 3 – Sometimes effective: [12] = (38.71%) 2 – Just satisfactorily: [0] = (0.0%) 1 – Not satisfactory: [2] = (6.45%)



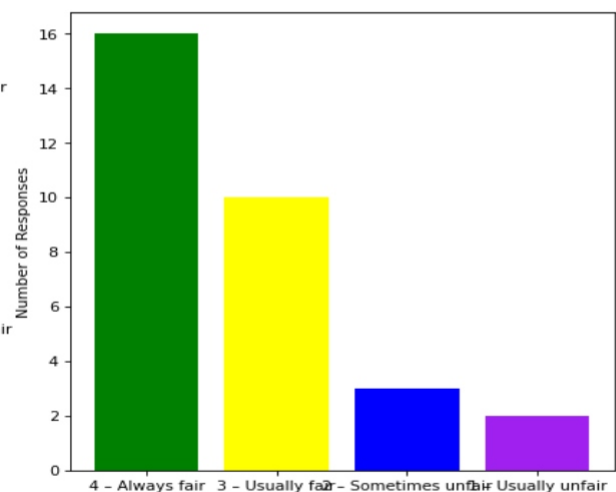
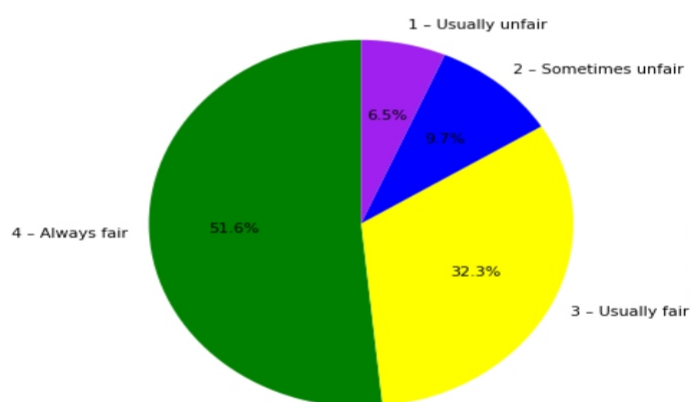
#### 4. Overall learning environment in the classes and laboratories is

4 - Excellent: [13] = (41.94%) 3 - Very good: [11] = (35.48%) 2 - Good: [5] = (16.13%) 1 - Fair: [2] = (6.45%)



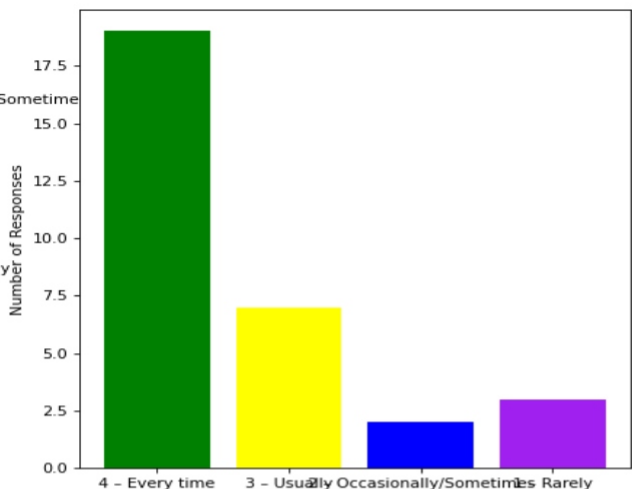
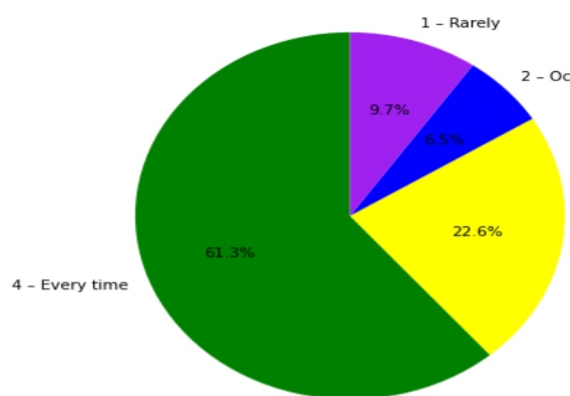
#### 5. Fairness of the internal evaluation process by the teachers is

4 - Always fair: [16] = (51.61%) 3 - Usually fair: [10] = (32.26%) 2 - Sometimes unfair: [3] = (9.68%) 1 - Usually unfair: [2] = (6.45%)



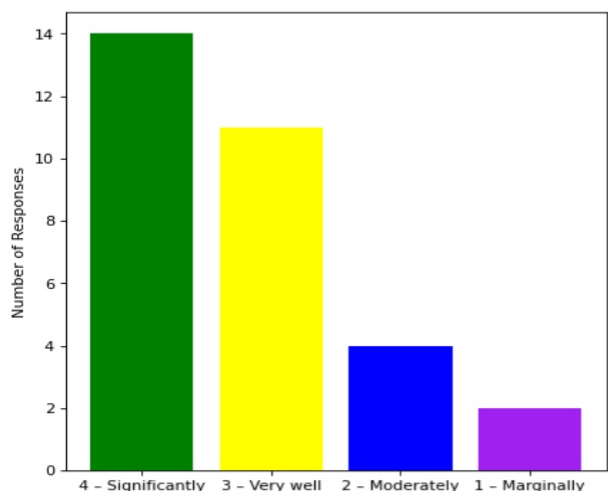
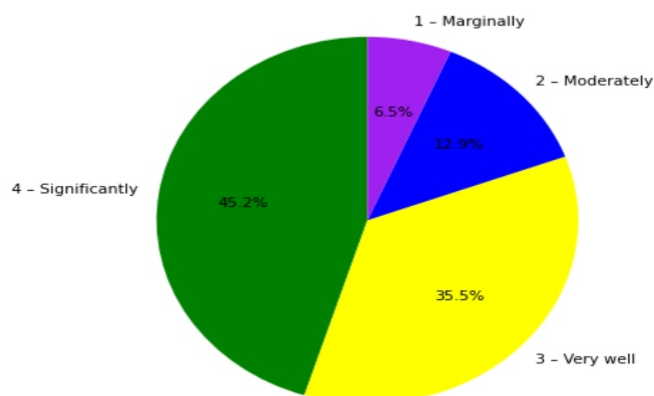
#### 6. The performance in internal evaluations and laboratory experimentation is discussed with the students

4 – Every time: [19] = (61.29%) 3 – Usually: [7] = (22.58%) 2 – Occasionally/Sometimes: [2] = (6.45%) 1 – Rarely: [3] = (9.68%)



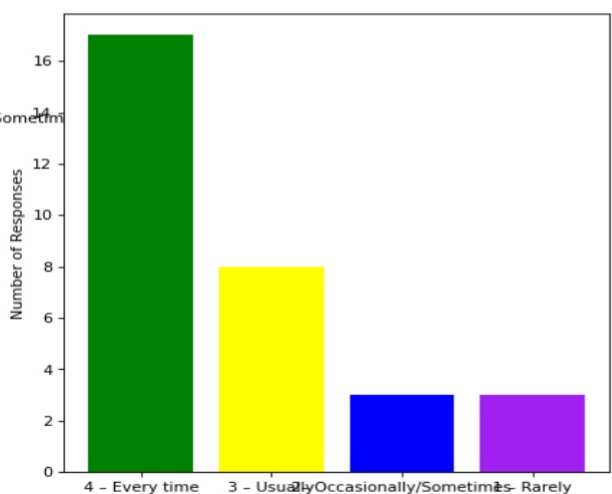
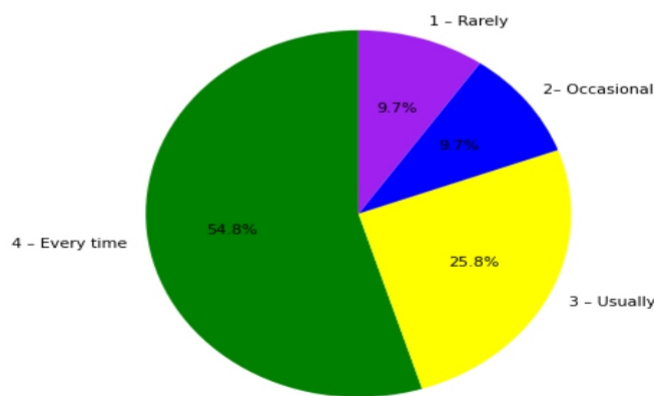
### 7. The teaching and mentoring process in the department supports the development of your cognitive, social, and emotional growth

4 – Significantly: [14] = (45.16%) 3 – Very well: [11] = (35.48%) 2 – Moderately: [4] = (12.9%) 1 – Marginally: [2] = (6.45%)



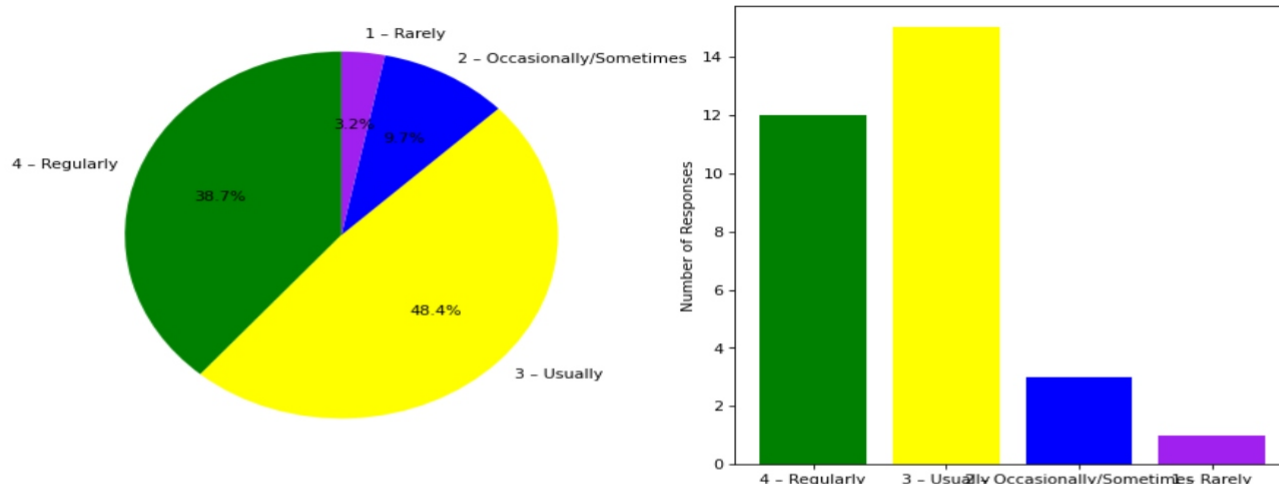
### 8. Teachers inform students about expected competencies, course outcomes, programme outcomes and overall system of outcome based education(OBE)

4 – Every time: [17] = (54.84%) 3 – Usually: [8] = (25.81%) 2 – Occasionally/Sometimes: [3] = (9.68%) 1 – Rarely: [3] = (9.68%)



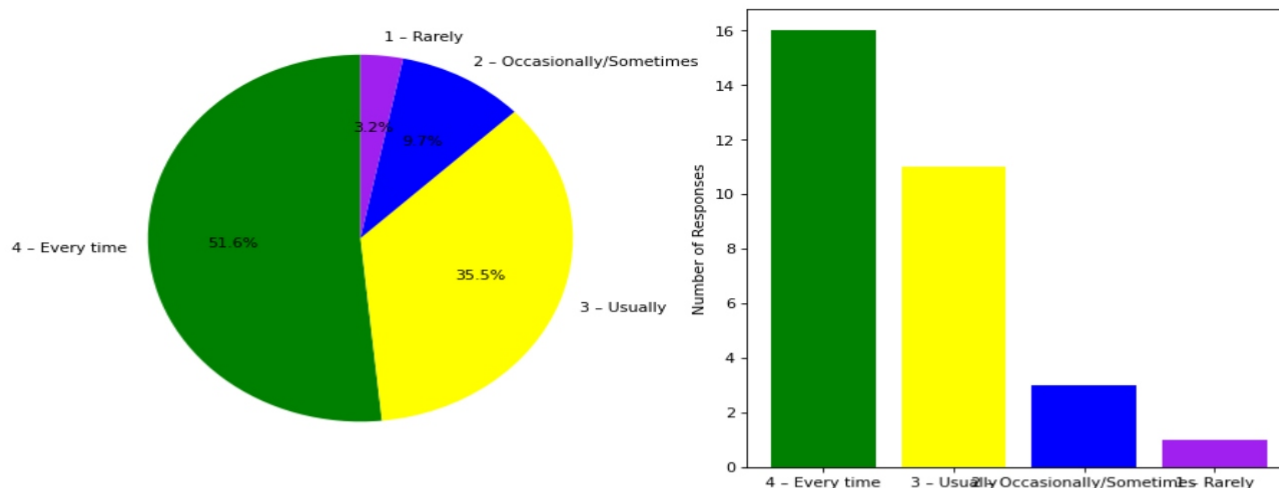
**9. Your mentor interacts with you to encourage on your strengths and counsel you to overcome your weakness by identifying them**

4 – Regularly: [12] = (38.71%) 3 – Usually: [15] = (48.39%) 2 – Occasionally/Sometimes: [3] = (9.68%) 1 – Rarely: [1] = (3.23%)



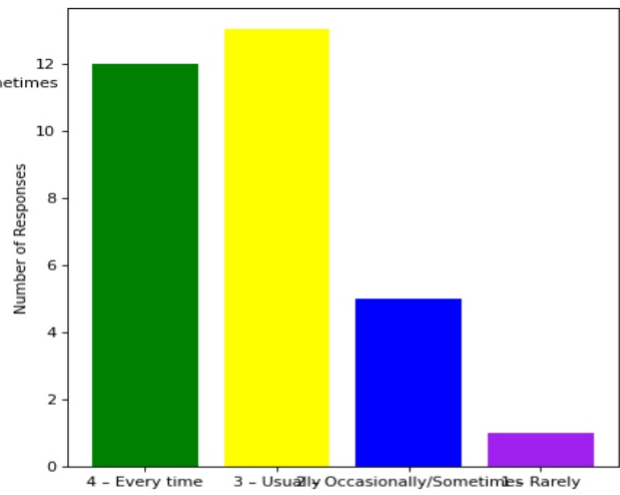
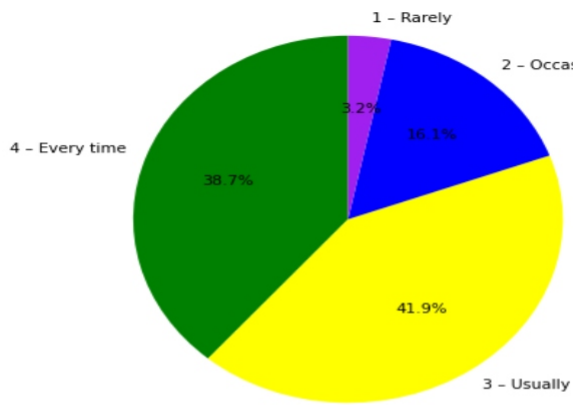
**10. The teachers illustrate the concepts through examples and applications and use student centric methods, such as experiential learning, participative learning and problem solving methodologies for enhancing learning experiences**

4 – Every time: [16] = (51.61%) 3 – Usually: [11] = (35.48%) 2 – Occasionally/Sometimes: [3] = (9.68%) 1 – Rarely: [1] = (3.23%)



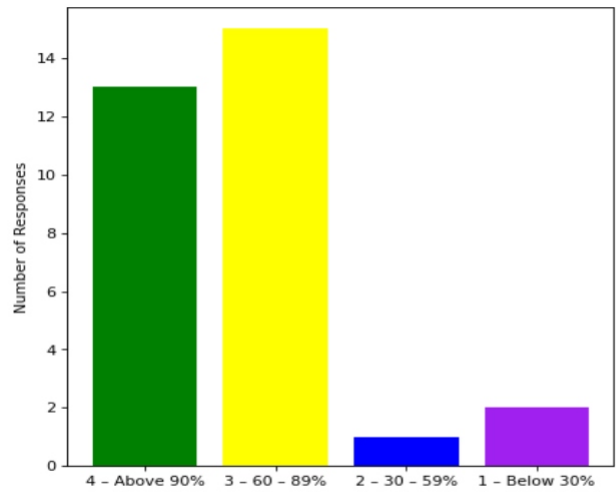
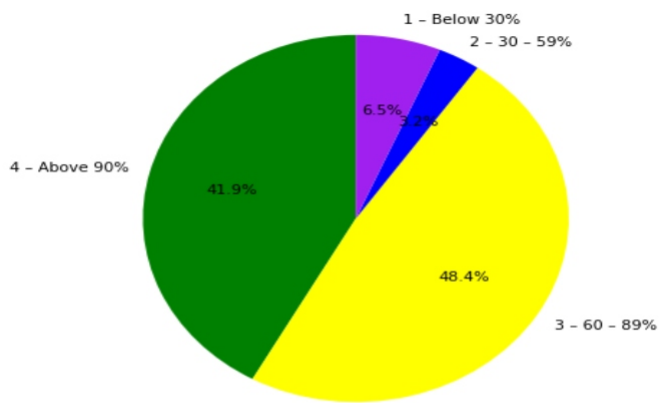
**11. The institute takes active interest in promoting internship, field visit, organizes workshop/seminar/extracurricular/co-curricular activities and helps to inculcate soft skills, life skills and employability skills for the holistic development of the students**

4 – Every time: [12] = (38.71%) 3 – Usually: [13] = (41.94%) 2 – Occasionally/Sometimes: [5] = (16.13%) 1 – Rarely: [1] = (3.23%)



**12. Percentage of teachers using ICT tools such as LCD projector, Multimedia, etc. while teaching**

4 - Above 90%: [13] = (41.94%) 3 - 60 - 89%: [15] = (48.39%) 2 - 30 - 59%: [1] = (3.23%) 1 - Below 30%: [2] = (6.45%)



This is a computer generated statement and does not require a signature.