

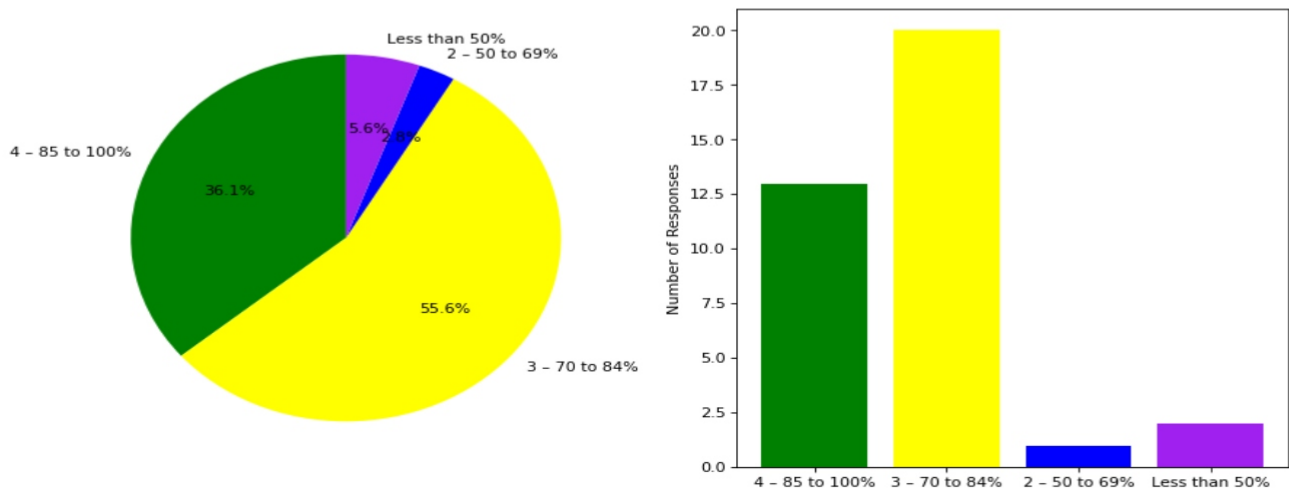


Semester End Survey
Academic Year: 2024-25
Department: CE
Semester: SEVENTH

Total number of students participated in the survey: 36

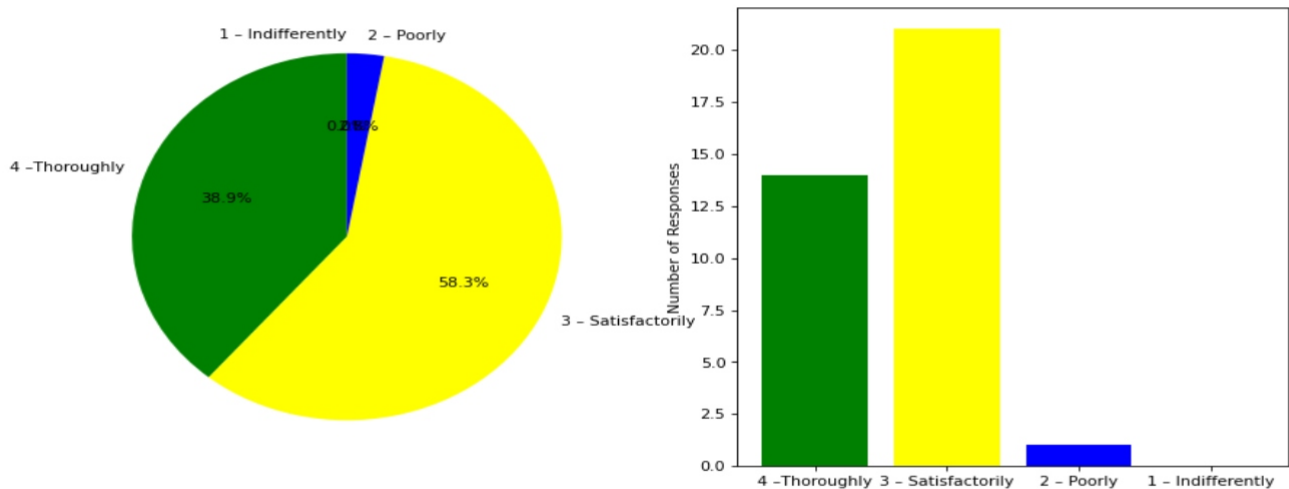
1. The overall syllabus coverage in the class is to an extent of

4 – 85 to 100%: [13] = (36.11%) 3 – 70 to 84%: [20] = (55.56%) 2 – 50 to 69%: [1] = (2.78%) Less than 50%: [2] = (5.56%)



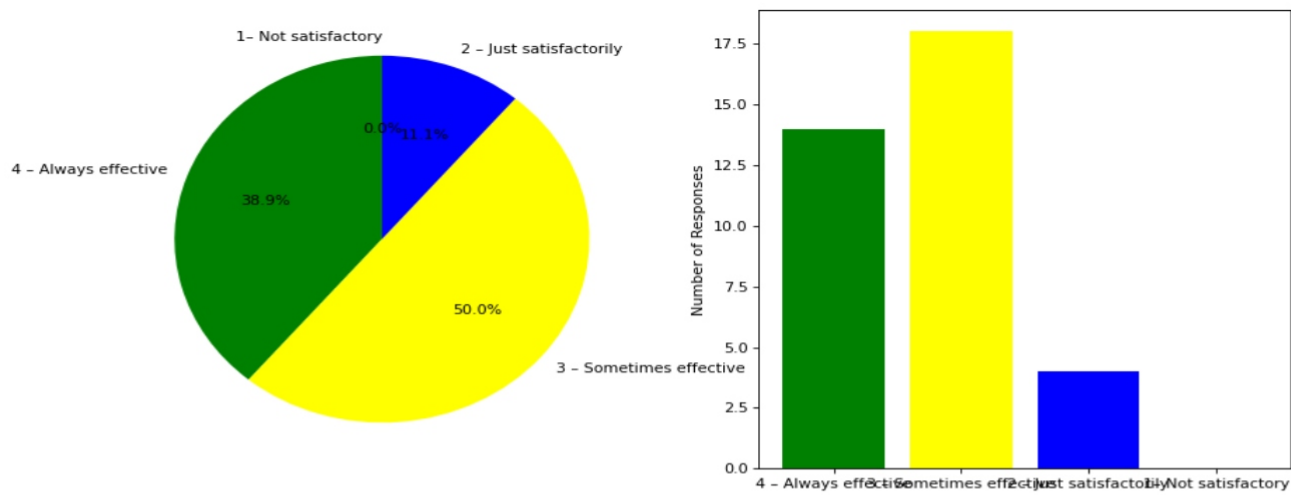
2. Teachers are prepared for the classes

4 –Thoroughly: [14] = (38.89%) 3 – Satisfactorily: [21] = (58.33%) 2 – Poorly: [1] = (2.78%) 1 – Indifferently: [0] = (0.0%)



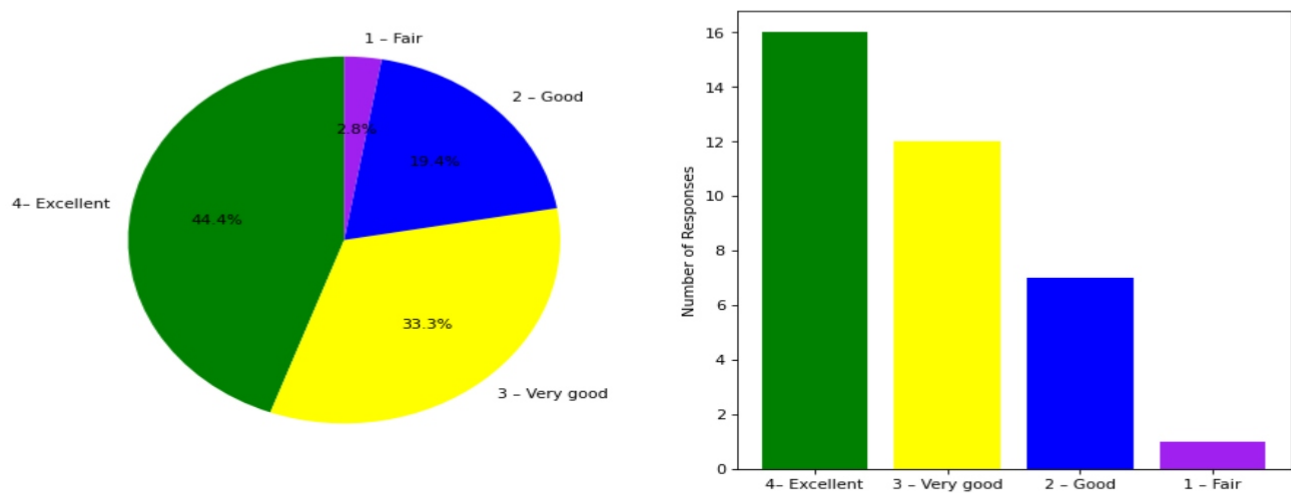
3. Communication of the teachers in the class and outside the class is

4 – Always effective: [14] = (38.89%) 3 – Sometimes effective: [18] = (50.0%) 2 – Just satisfactory: [4] = (11.11%) 1 – Not satisfactory: [0] = (0.0%)



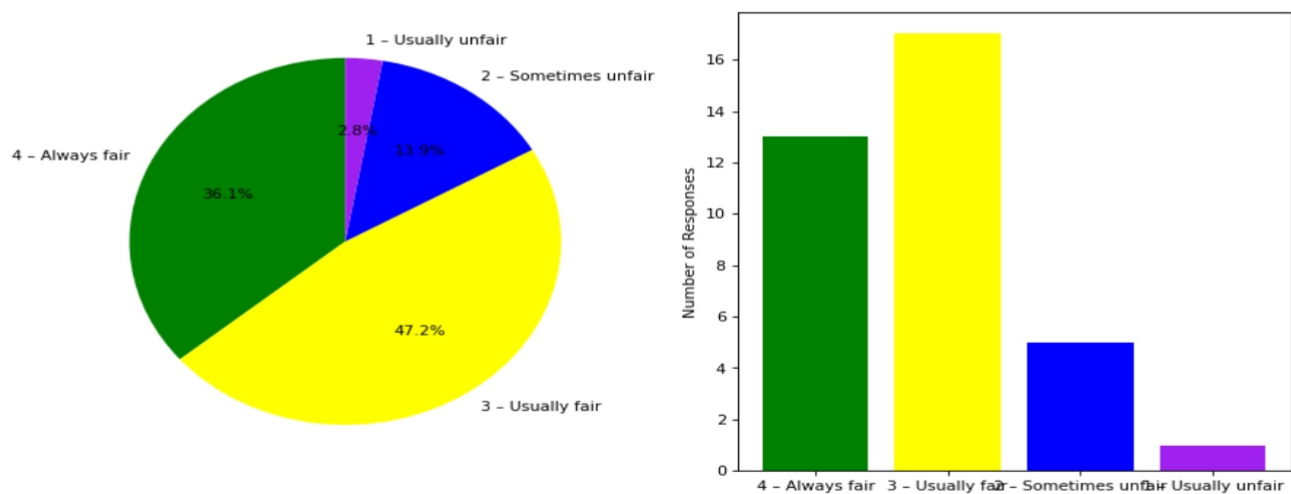
4. Overall learning environment in the classes and laboratories is

4- Excellent: [16] = (44.44%) 3 - Very good: [12] = (33.33%) 2 - Good: [7] = (19.44%) 1 - Fair: [1] = (2.78%)



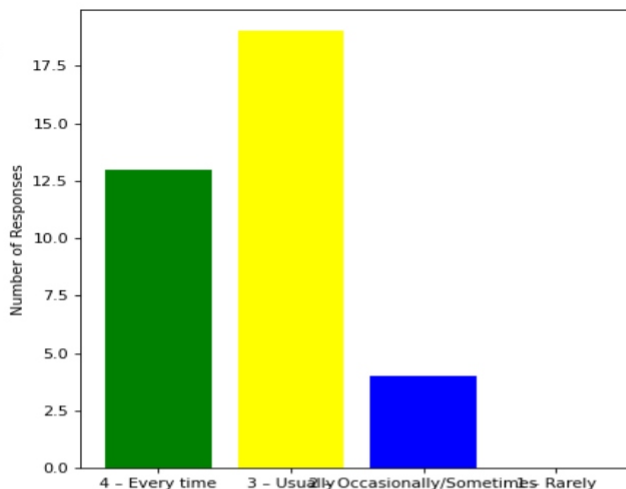
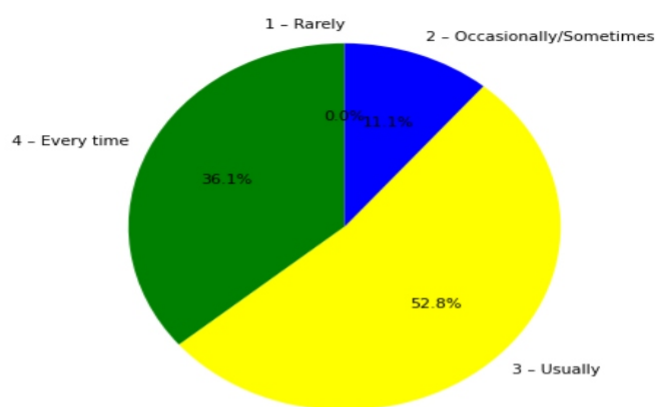
5. Fairness of the internal evaluation process by the teachers is

4 - Always fair: [13] = (36.11%) 3 - Usually fair: [17] = (47.22%) 2 - Sometimes unfair: [5] = (13.89%) 1 - Usually unfair: [1] = (2.78%)



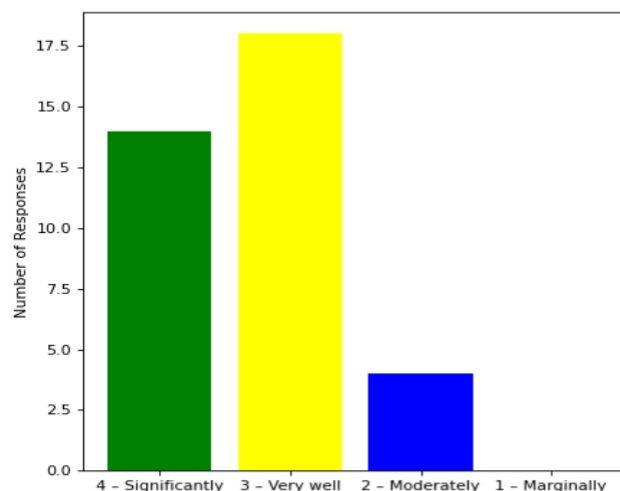
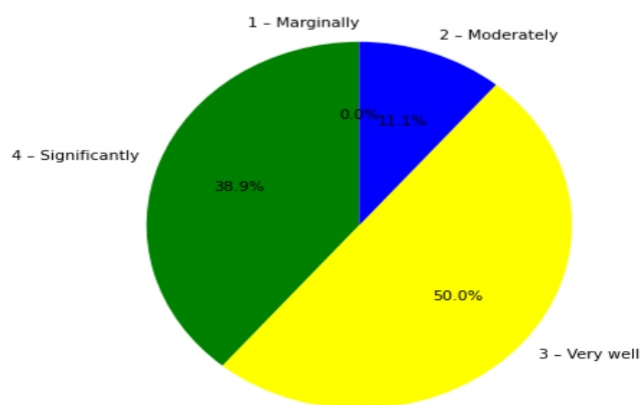
6. The performance in internal evaluations and laboratory experimentation is discussed with the students

4 – Every time: [13] = (36.11%) 3 – Usually: [19] = (52.78%) 2 – Occasionally/Sometimes: [4] = (11.11%) 1 – Rarely: [0] = (0.0%)



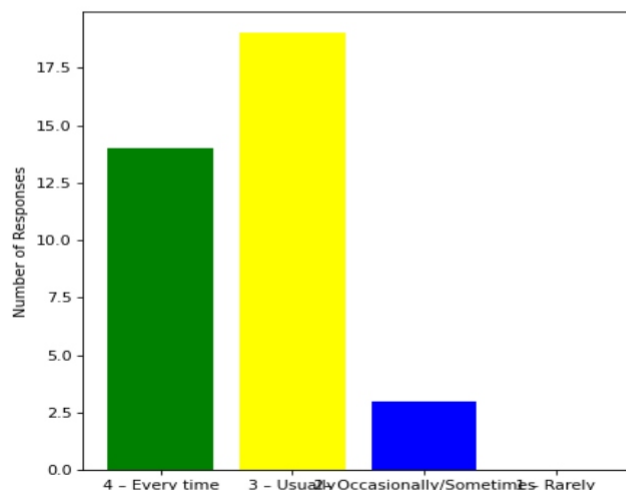
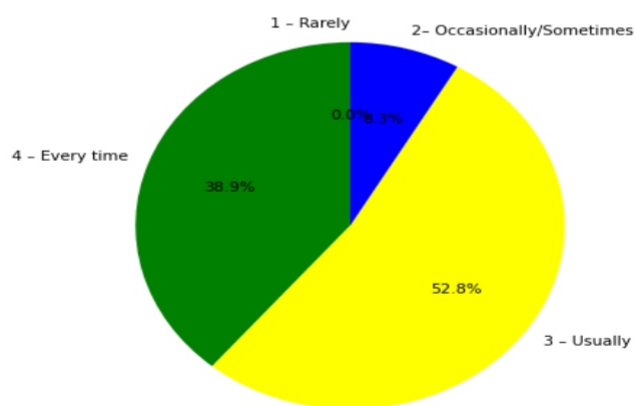
7. The teaching and mentoring process in the department supports the development of your cognitive, social, and emotional growth

4 – Significantly: [14] = (38.89%) 3 – Very well: [18] = (50.0%) 2 – Moderately: [4] = (11.11%) 1 – Marginally: [0] = (0.0%)



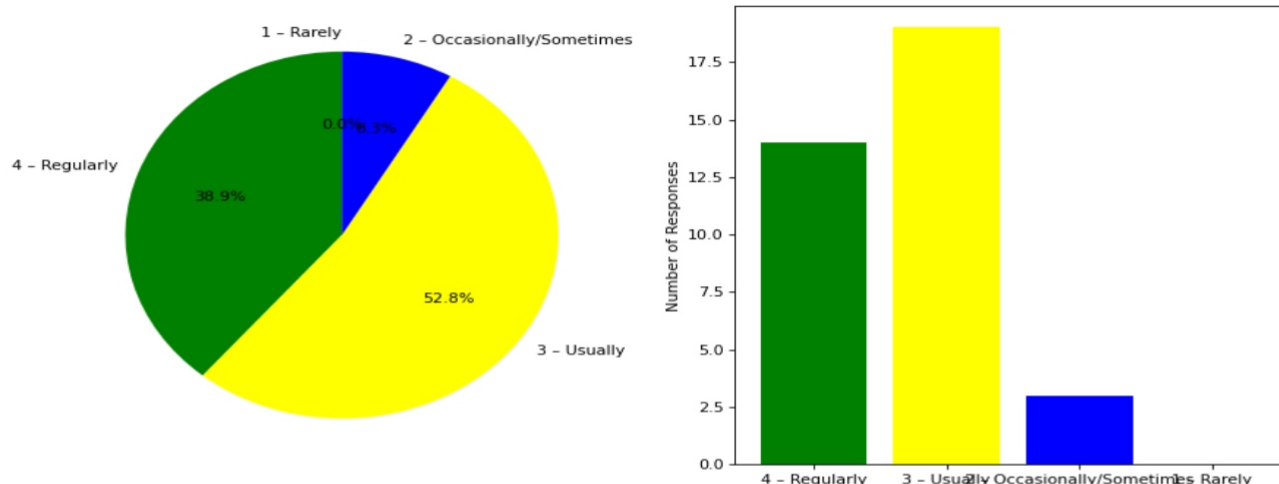
8. Teachers inform students about expected competencies, course outcomes, programme outcomes and overall system of outcome based education(OBE)

4 – Every time: [14] = (38.89%) 3 – Usually: [19] = (52.78%) 2 – Occasionally/Sometimes: [3] = (8.33%) 1 – Rarely: [0] = (0.0%)



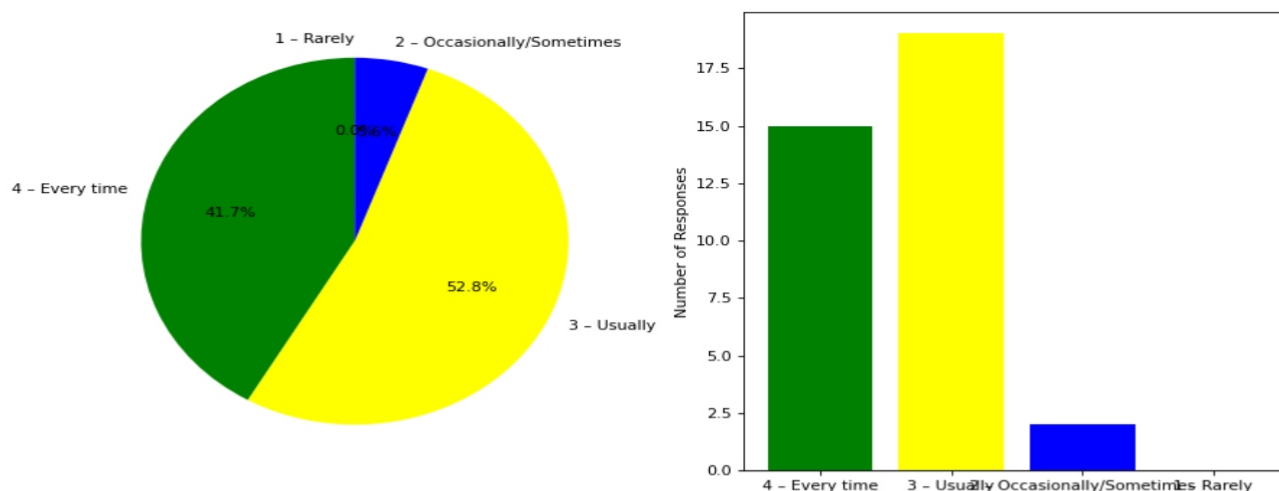
9. Your mentor interacts with you to encourage on your strengths and counsel you to overcome your weakness by identifying them

4 – Regularly: [14] = (38.89%) 3 – Usually: [19] = (52.78%) 2 – Occasionally/Sometimes: [3] = (8.33%) 1 – Rarely: [0] = (0.0%)



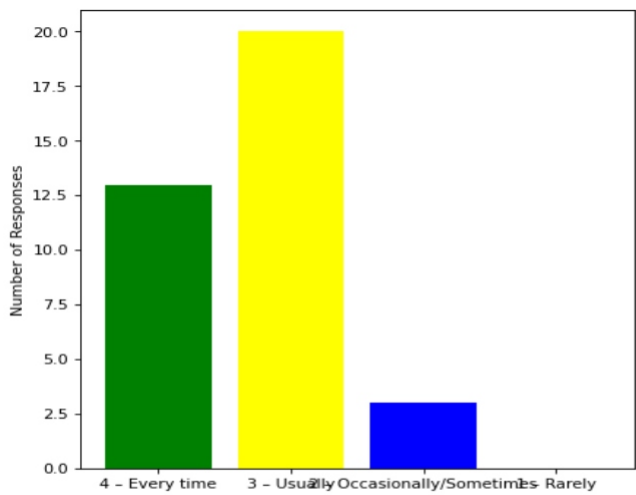
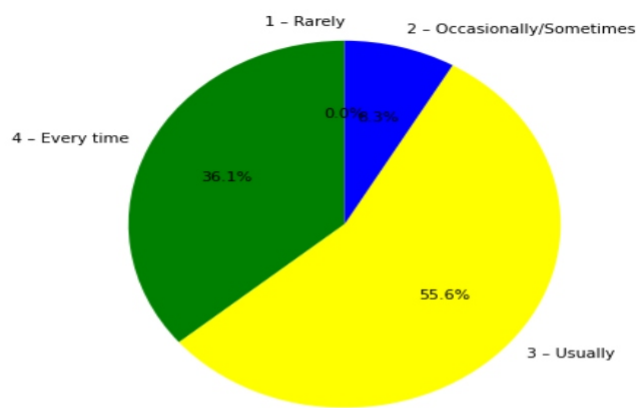
10. The teachers illustrate the concepts through examples and applications and use student centric methods, such as experiential learning, participative learning and problem solving methodologies for enhancing learning experiences

4 – Every time: [15] = (41.67%) 3 – Usually: [19] = (52.78%) 2 – Occasionally/Sometimes: [2] = (5.56%) 1 – Rarely: [0] = (0.0%)



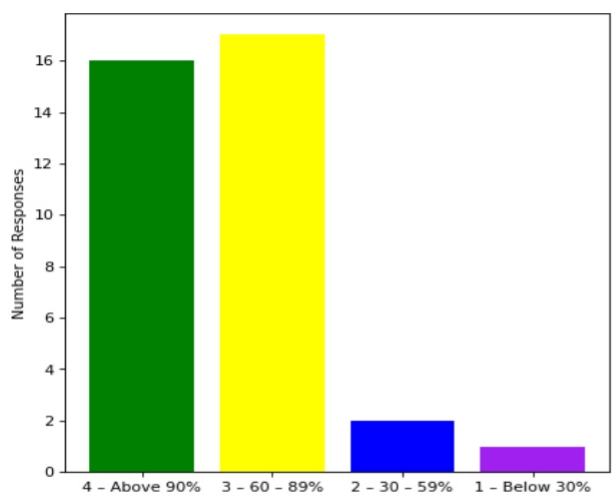
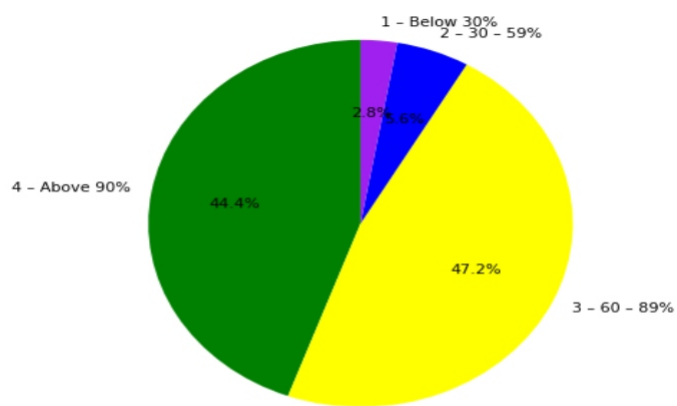
11. The institute takes active interest in promoting internship, field visit, organizes workshop/seminar/extracurricular/co-curricular activities and helps to inculcate soft skills, life skills and employability skills for the holistic development of the students

4 – Every time: [13] = (36.11%) 3 – Usually: [20] = (55.56%) 2 – Occasionally/Sometimes: [3] = (8.33%) 1 – Rarely: [0] = (0.0%)



12. Percentage of teachers using ICT tools such as LCD projector, Multimedia, etc. while teaching

4 – Above 90%: [16] = (44.44%) 3 – 60 – 89%: [17] = (47.22%) 2 – 30 – 59%: [2] = (5.56%) 1 – Below 30%: [1] = (2.78%)



This is a computer generated statement and does not require a signature.