

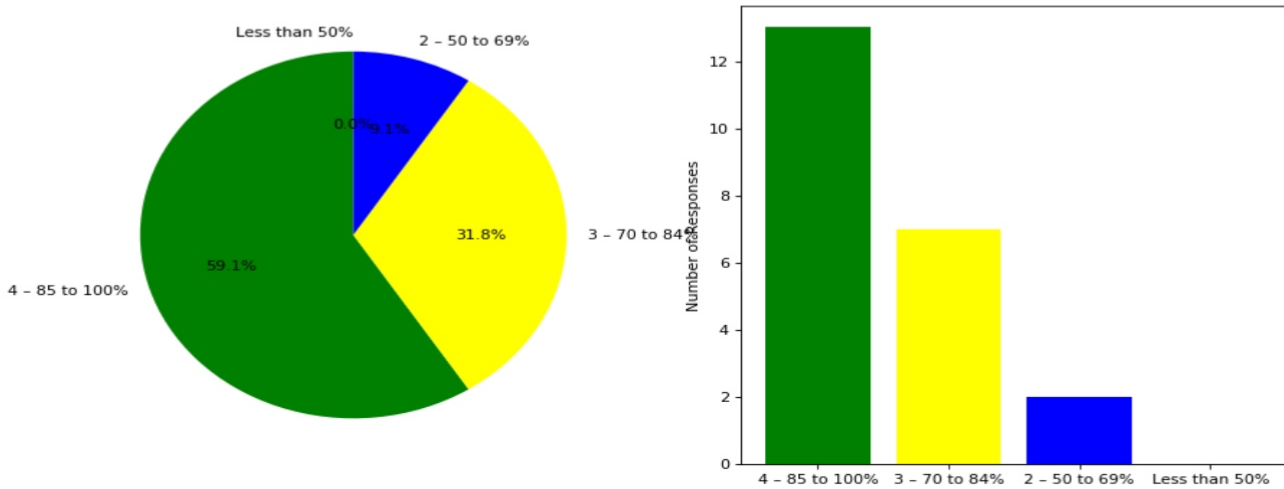


Semester End Survey  
Academic Year: 2024-25  
Department: ME  
Semester: FIFTH

Total number of students participated in the survey: 22

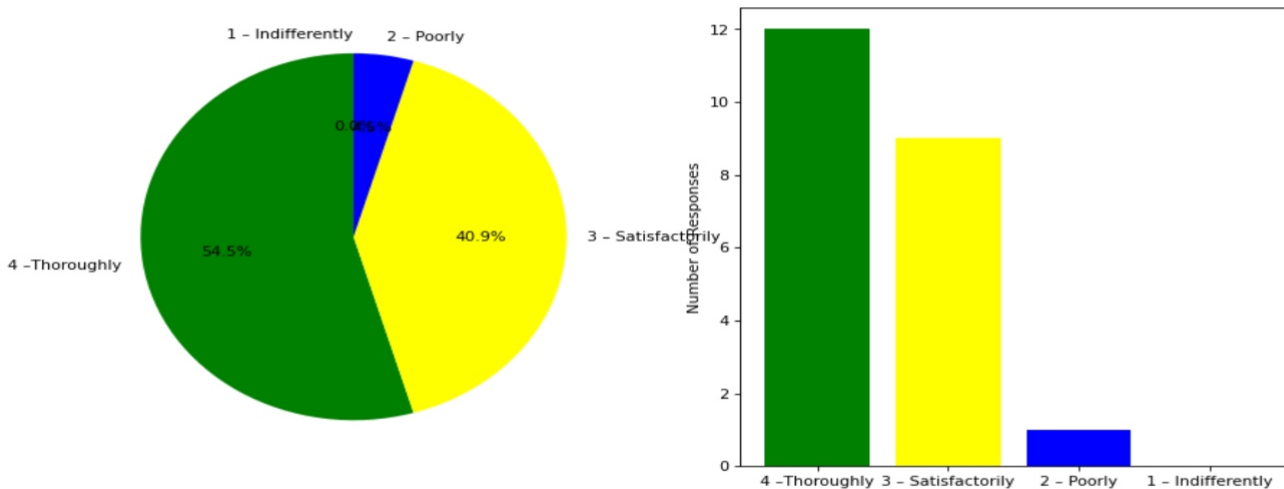
### 1. The overall syllabus coverage in the class is to an extent of

4 – 85 to 100%: [13] = (59.09%) 3 – 70 to 84%: [7] = (31.82%) 2 – 50 to 69%: [2] = (9.09%) Less than 50%: [0] = (0.0%)



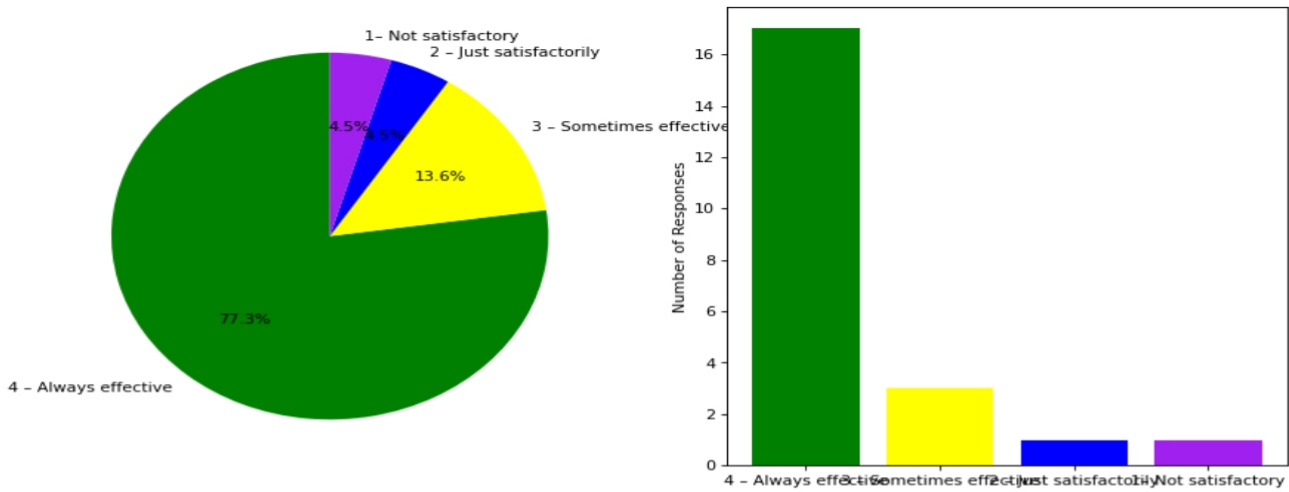
### 2. Teachers are prepared for the classes

4 –Thoroughly: [12] = (54.55%) 3 – Satisfactorily: [9] = (40.91%) 2 – Poorly: [1] = (4.55%) 1 – Indifferently: [0] = (0.0%)



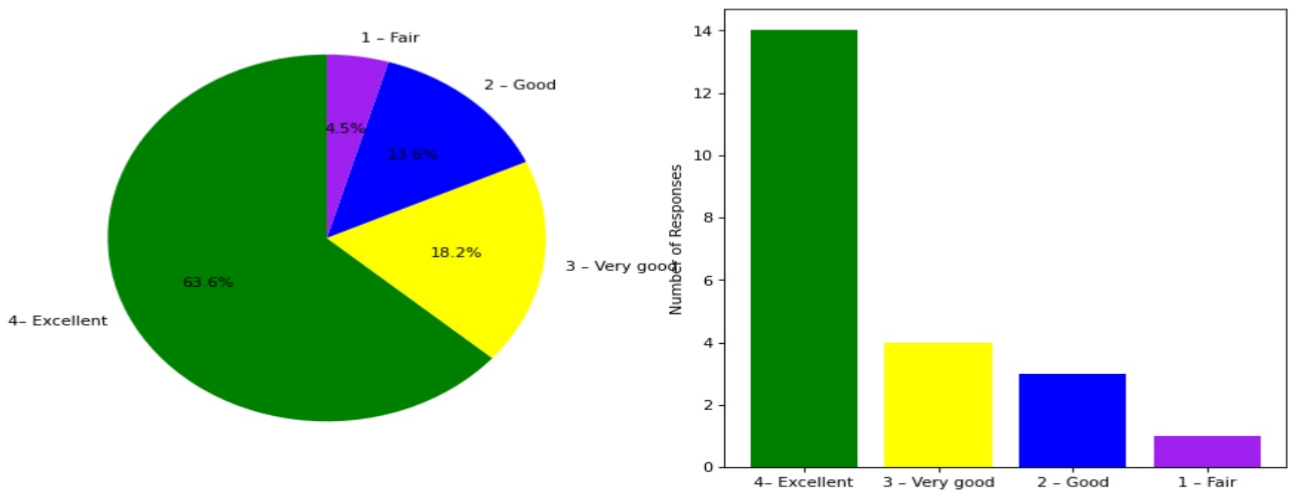
### 3. Communication of the teachers in the class and outside the class is

4 – Always effective: [17] = (77.27%) 3 – Sometimes effective: [3] = (13.64%) 2 – Just satisfactory: [1] = (4.55%) 1 – Not satisfactory: [1] = (4.55%)



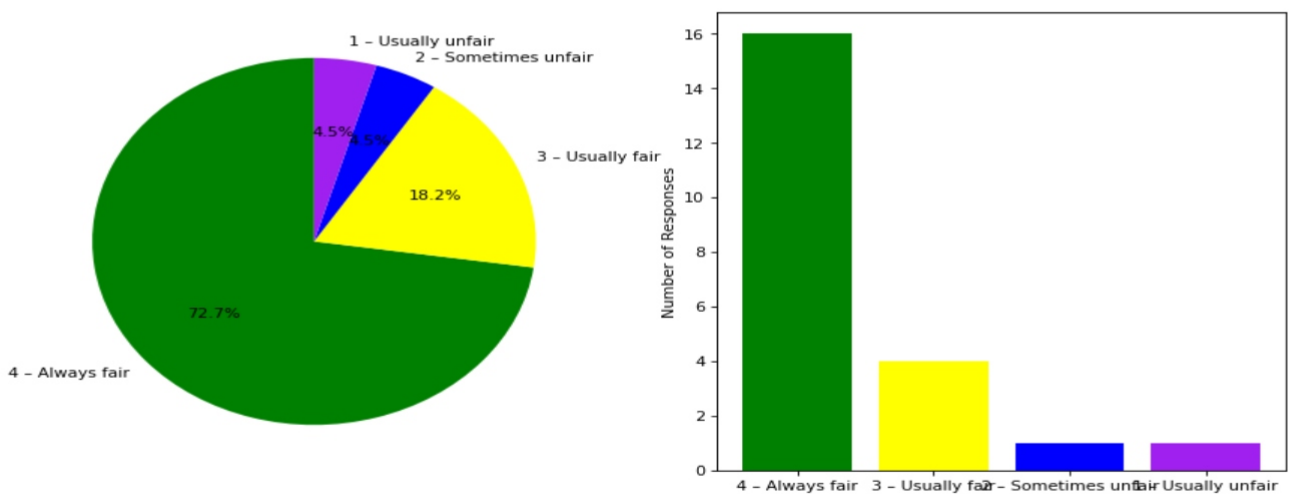
#### 4. Overall learning environment in the classes and laboratories is

4- Excellent: [14] = (63.64%) 3 - Very good: [4] = (18.18%) 2 - Good: [3] = (13.64%) 1 - Fair: [1] = (4.55%)



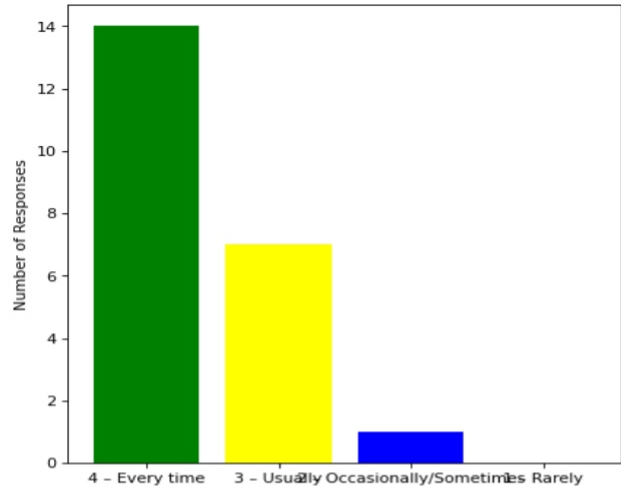
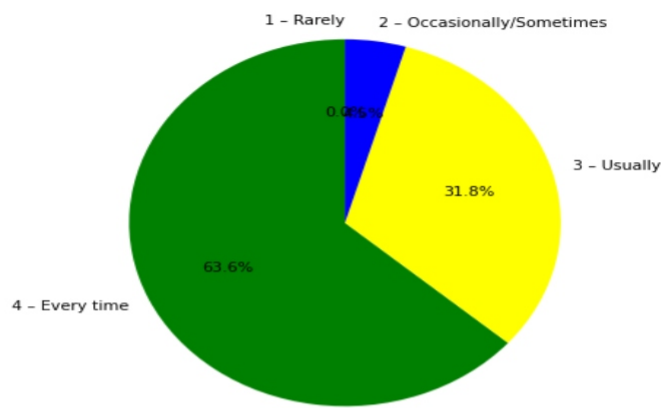
#### 5. Fairness of the internal evaluation process by the teachers is

4 - Always fair: [16] = (72.73%) 3 - Usually fair: [4] = (18.18%) 2 - Sometimes unfair: [1] = (4.55%) 1 - Usually unfair: [1] = (4.55%)



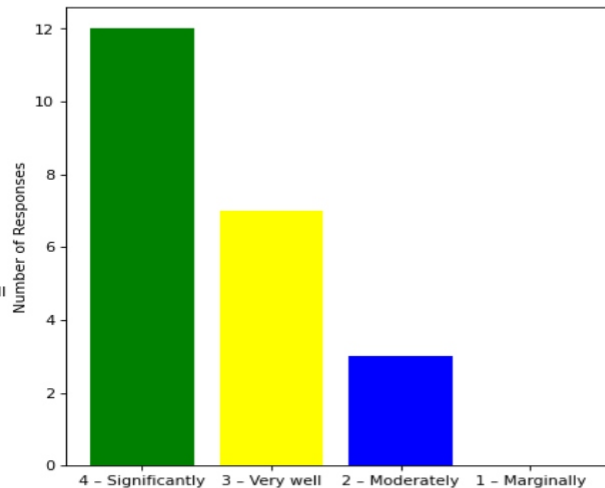
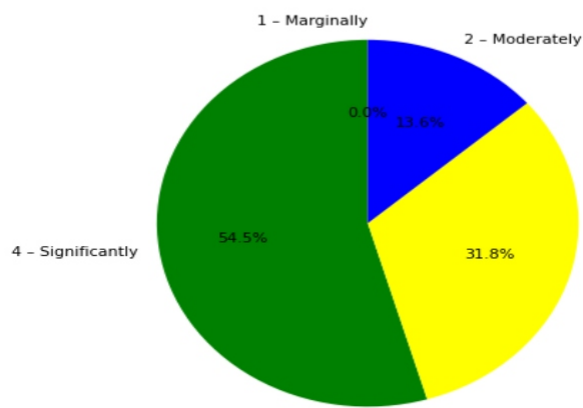
#### 6. The performance in internal evaluations and laboratory experimentation is discussed with the students

4 – Every time: [14] = (63.64%) 3 – Usually: [7] = (31.82%) 2 – Occasionally/Sometimes: [1] = (4.55%) 1 – Rarely: [0] = (0.0%)



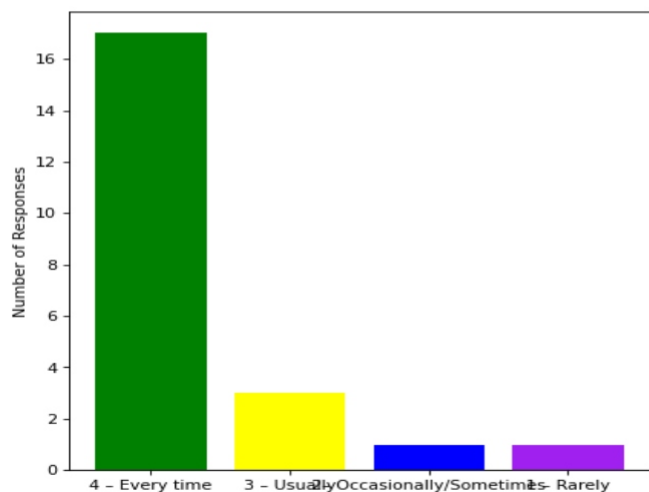
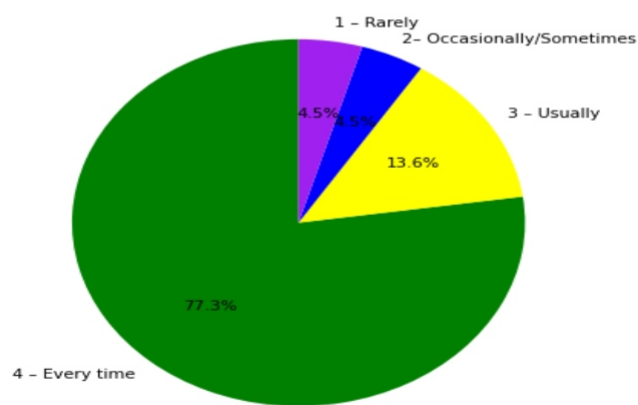
**7. The teaching and mentoring process in the department supports the development of your cognitive, social, and emotional growth**

4 – Significantly: [12] = (54.55%) 3 – Very well: [7] = (31.82%) 2 – Moderately: [3] = (13.64%) 1 – Marginally: [0] = (0.0%)



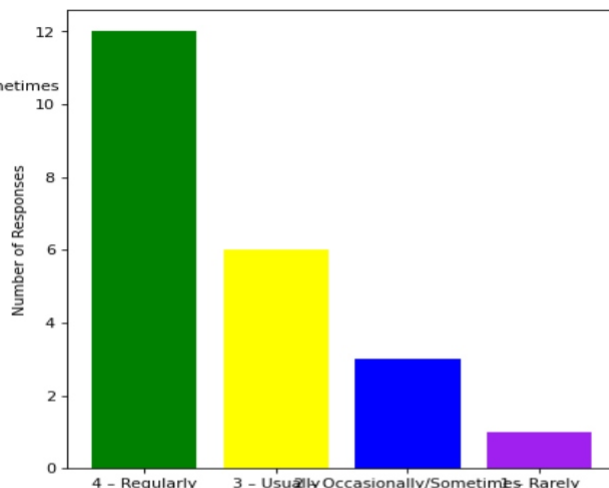
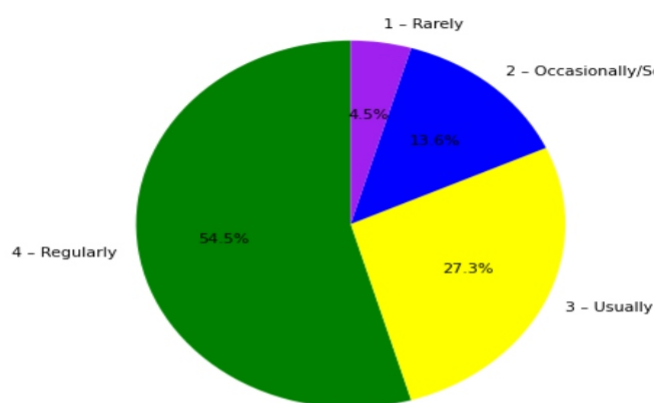
**8. Teachers inform students about expected competencies, course outcomes , programme outcomes and overall system of outcome based education(OBE)**

4 – Every time: [17] = (77.27%) 3 – Usually: [3] = (13.64%) 2 – Occasionally/Sometimes: [1] = (4.55%) 1 – Rarely: [1] = (4.55%)



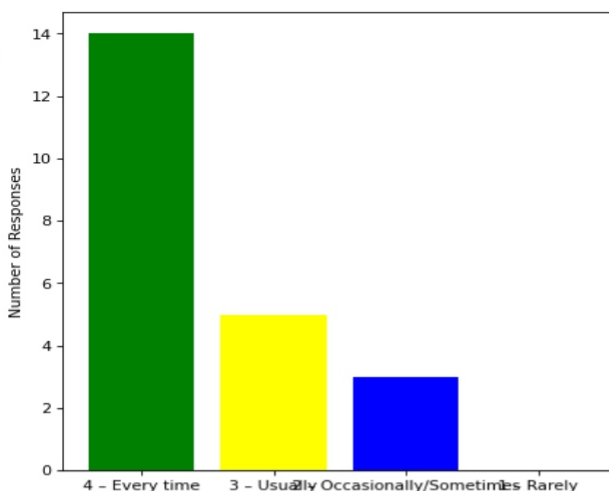
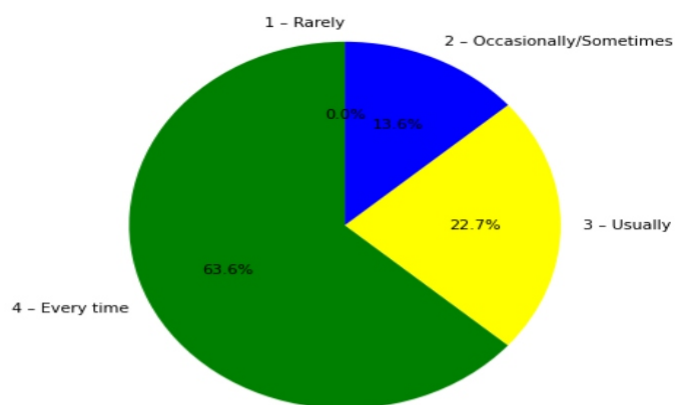
**9. Your mentor interacts with you to encourage on your strengths and counsel you to overcome your weakness by identifying them**

4 – Regularly: [12] = (54.55%) 3 – Usually: [6] = (27.27%) 2 – Occasionally/Sometimes: [3] = (13.64%) 1 – Rarely: [1] = (4.55%)



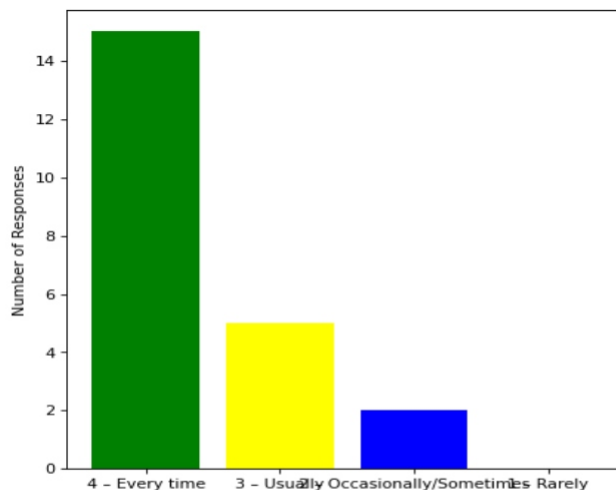
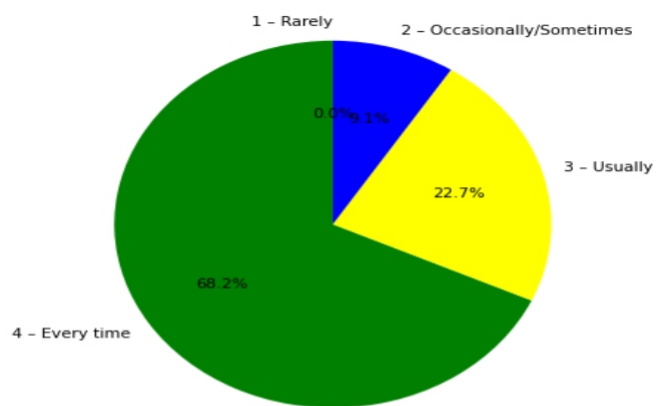
**10. The teachers illustrate the concepts through examples and applications and use student centric methods, such as experiential learning, participative learning and problem solving methodologies for enhancing learning experiences**

4 – Every time: [14] = (63.64%) 3 – Usually: [5] = (22.73%) 2 – Occasionally/Sometimes: [3] = (13.64%) 1 – Rarely: [0] = (0.0%)



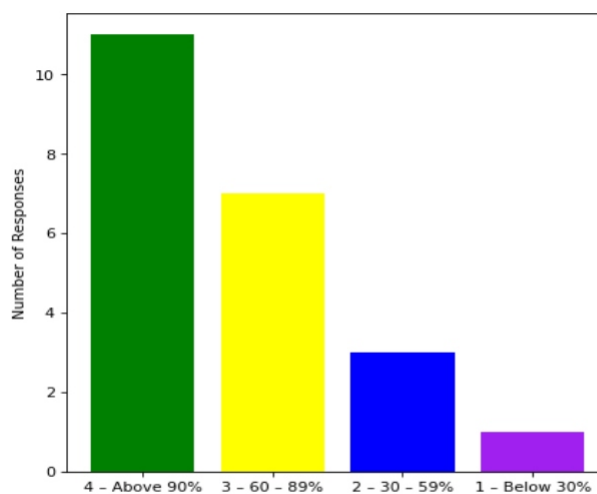
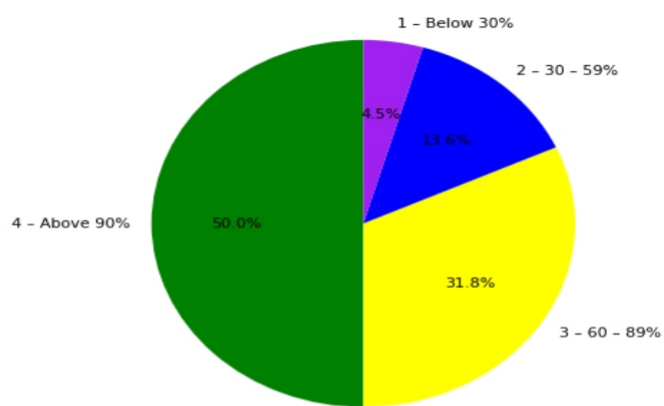
**11. The institute takes active interest in promoting internship, field visit, organizes workshop/seminar/extracurricular/co-curricular activities and helps to inculcate soft skills, life skills and employability skills for the holistic development of the students**

4 – Every time: [15] = (68.18%) 3 – Usually: [5] = (22.73%) 2 – Occasionally/Sometimes: [2] = (9.09%) 1 – Rarely: [0] = (0.0%)



**12. Percentage of teachers using ICT tools such as LCD projector, Multimedia, etc. while teaching**

4 – Above 90%: [11] = (50.0%) 3 – 60 – 89%: [7] = (31.82%) 2 – 30 – 59%: [3] = (13.64%) 1 – Below 30%: [1] = (4.55%)



This is a computer generated statement and does not require a signature.