



## Semester End Survey

Academic Year: 2024-25

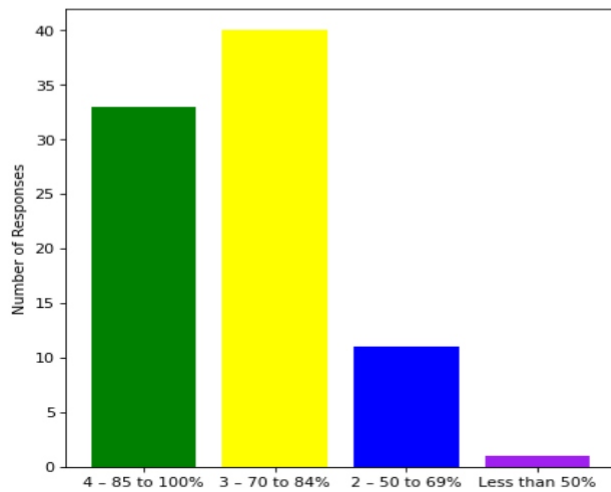
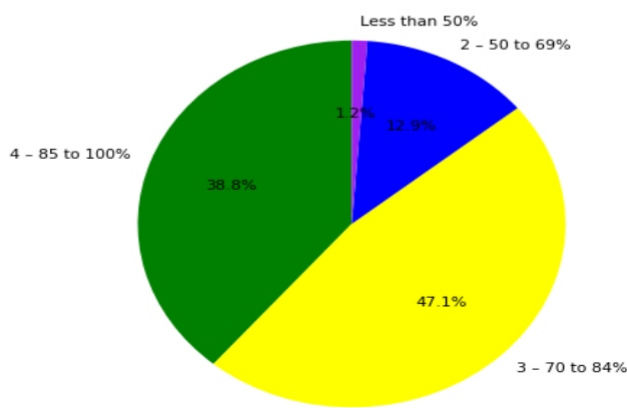
Department: EE

Semester: FIFTH

Total number of students participated in the survey: 86

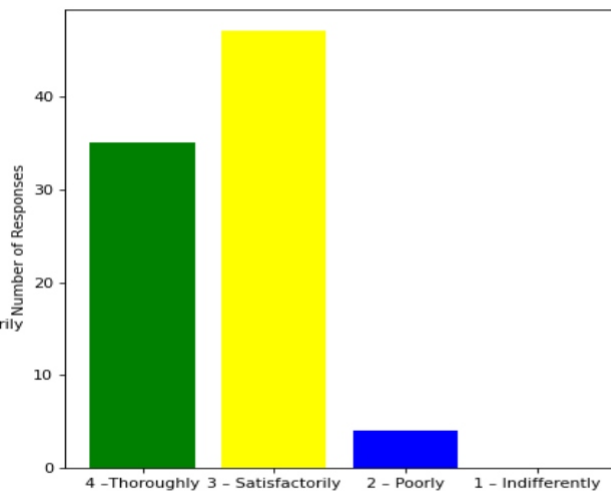
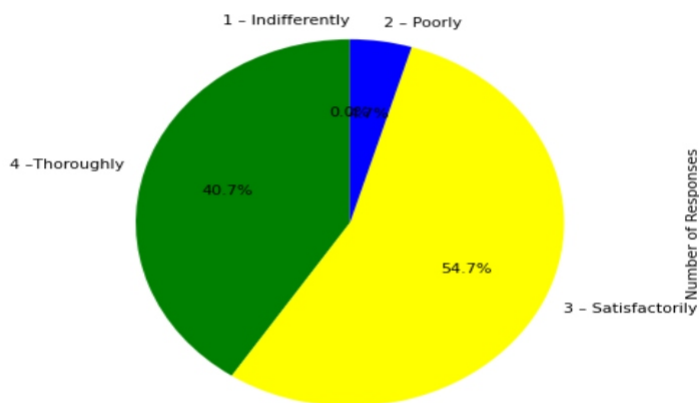
### 1. The overall syllabus coverage in the class is to an extent of

4 – 85 to 100%: [33] = (38.82%) 3 – 70 to 84%: [40] = (47.06%) 2 – 50 to 69%: [11] = (12.94%) Less than 50%: [1] = (1.18%)



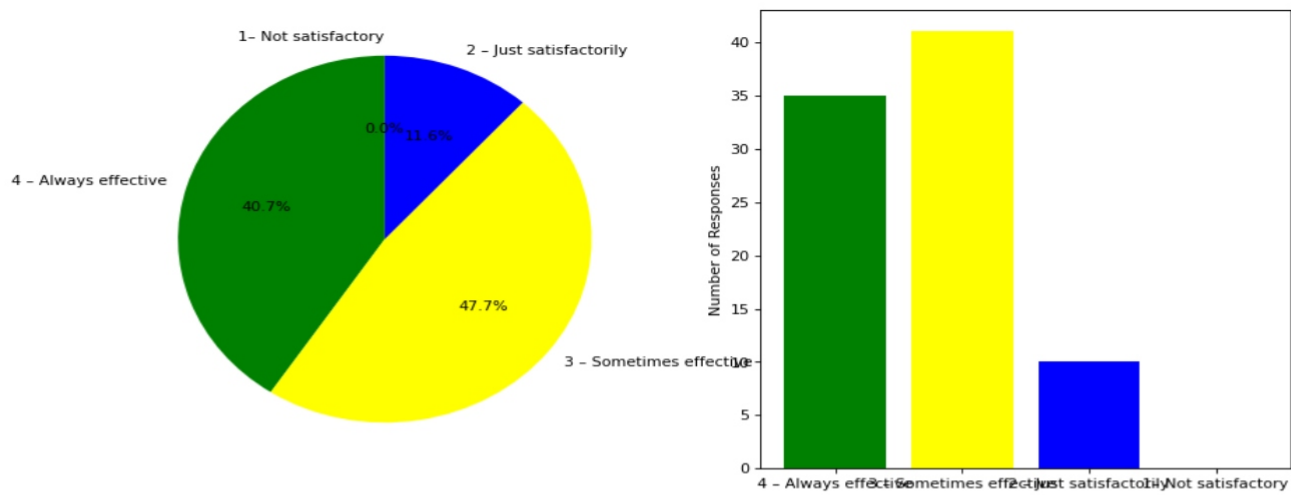
### 2. Teachers are prepared for the classes

4 –Thoroughly: [35] = (40.7%) 3 – Satisfactorily: [47] = (54.65%) 2 – Poorly: [4] = (4.65%) 1 – Indifferently: [0] = (0.0%)



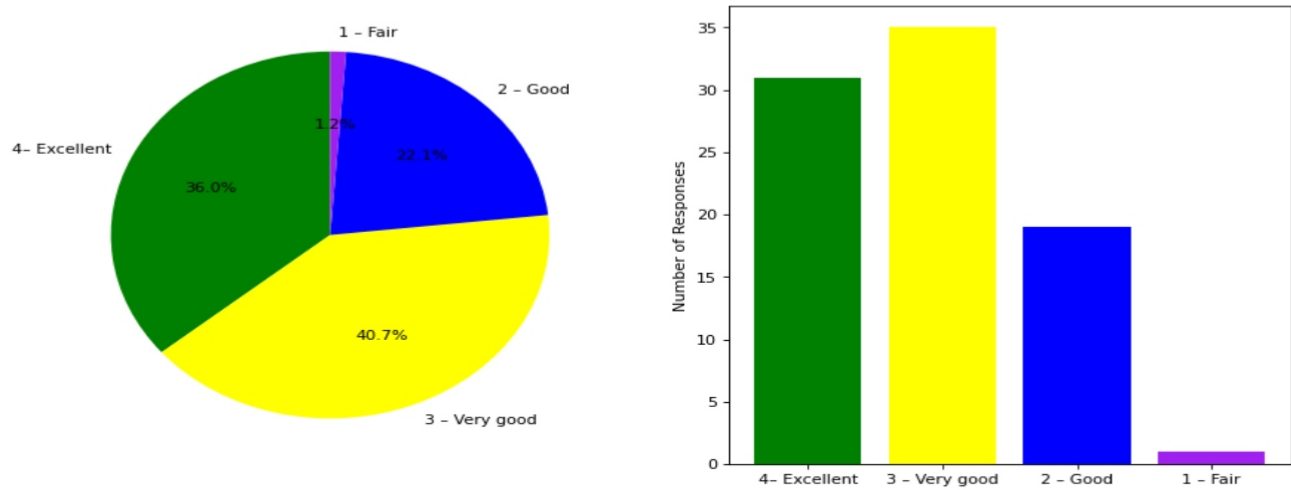
### 3. Communication of the teachers in the class and outside the class is

4 – Always effective: [35] = (40.7%) 3 – Sometimes effective: [41] = (47.67%) 2 – Just satisfactory: [10] = (11.63%) 1– Not satisfactory: [0] = (0.0%)



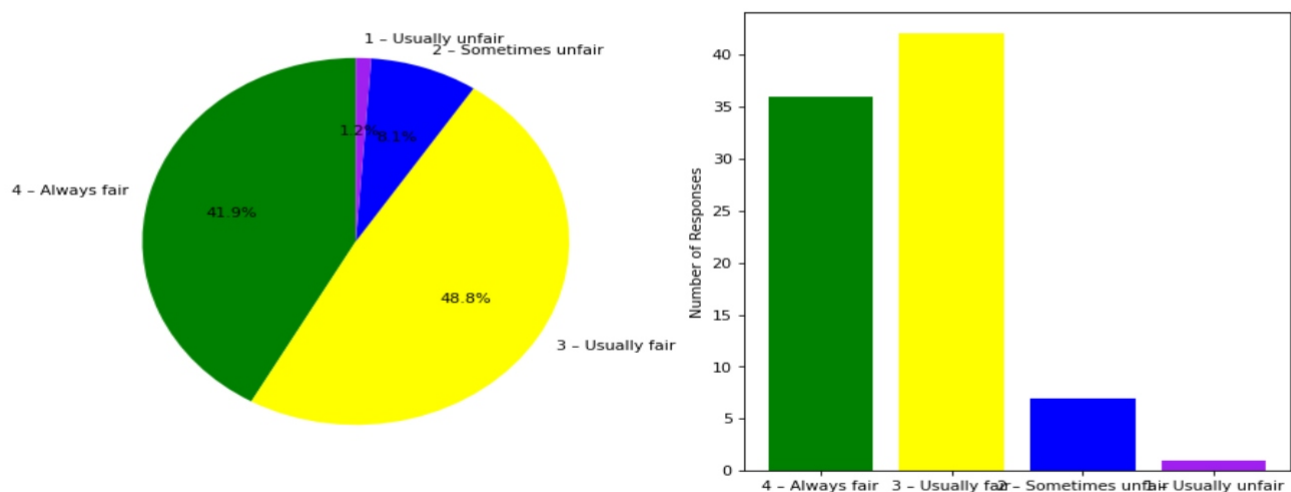
#### 4. Overall learning environment in the classes and laboratories is

4- Excellent: [31] = (36.05%) 3 - Very good: [35] = (40.7%) 2 - Good: [19] = (22.09%) 1 - Fair: [1] = (1.16%)



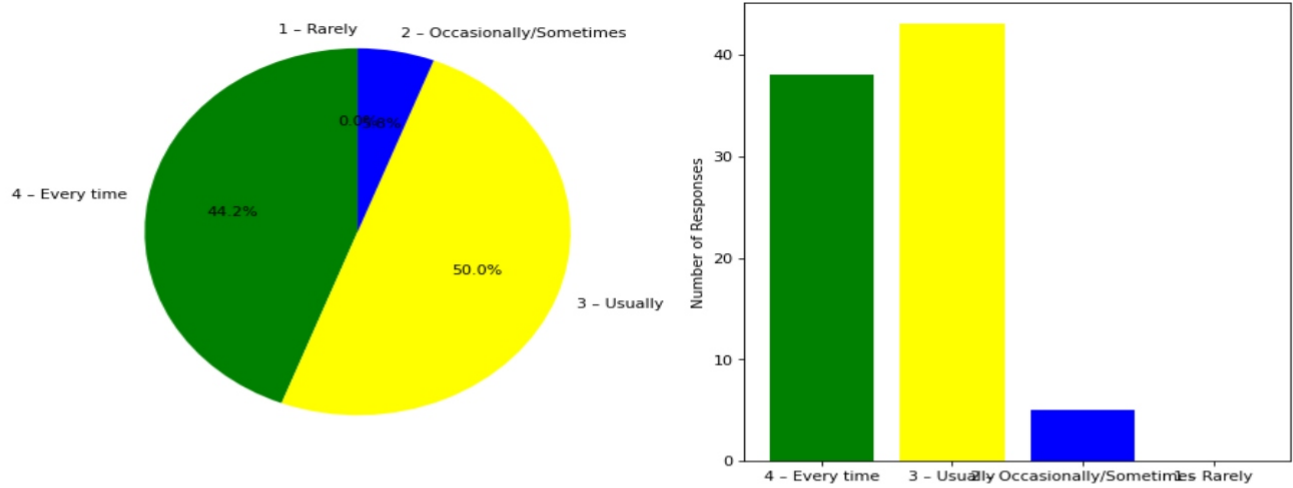
#### 5. Fairness of the internal evaluation process by the teachers is

4 - Always fair: [36] = (41.86%) 3 - Usually fair: [42] = (48.84%) 2 - Sometimes unfair: [7] = (8.14%) 1 - Usually unfair: [1] = (1.16%)



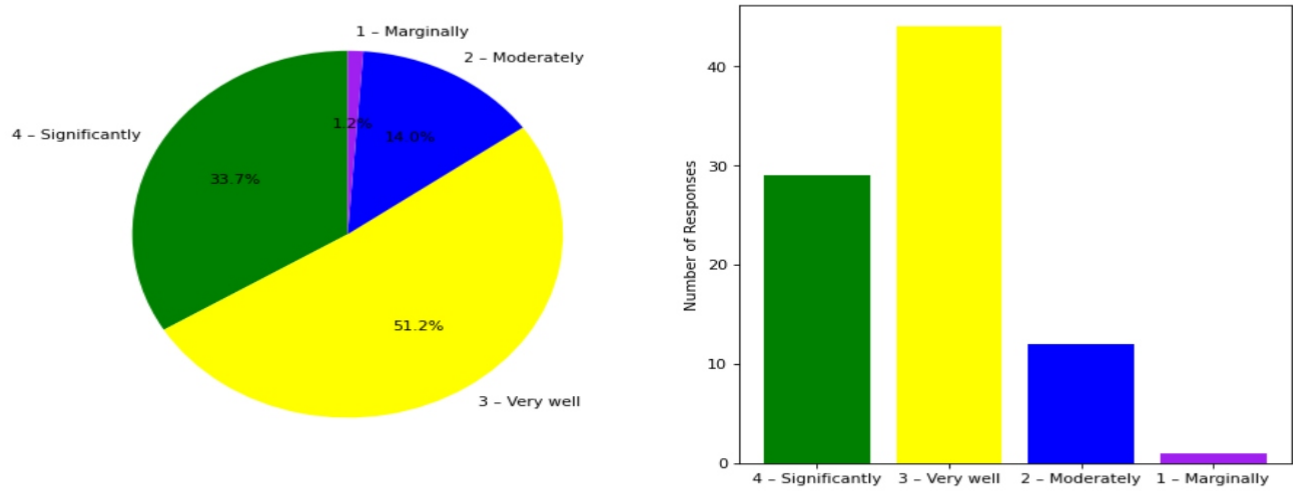
#### 6. The performance in internal evaluations and laboratory experimentation is discussed with the students

4 – Every time: [38] = (44.19%) 3 – Usually: [43] = (50.0%) 2 – Occasionally/Sometimes: [5] = (5.81%) 1 – Rarely: [0] = (0.0%)



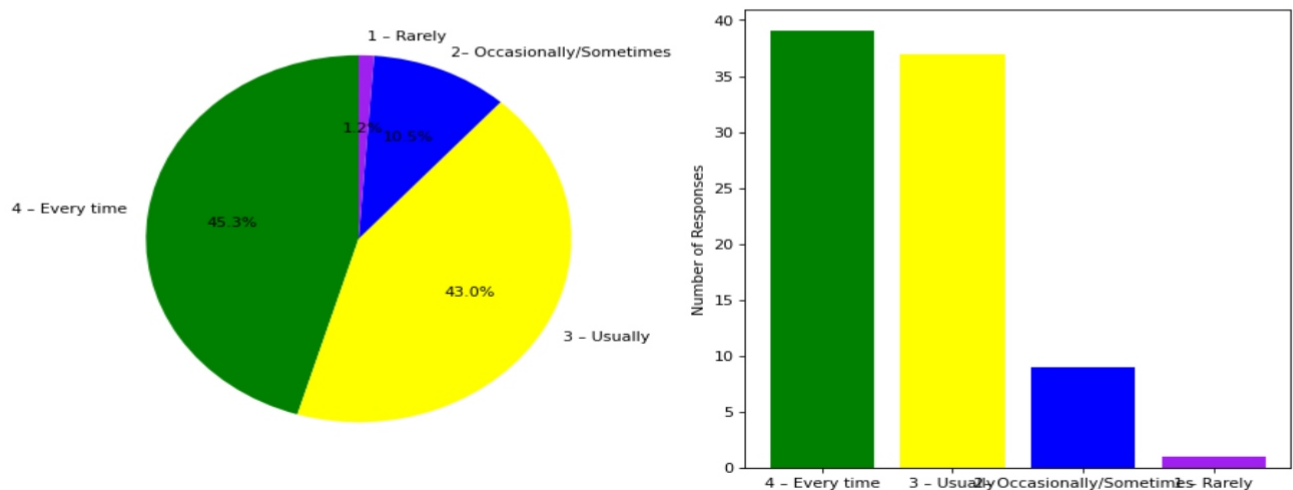
**7. The teaching and mentoring process in the department supports the development of your cognitive, social, and emotional growth**

4 – Significantly: [29] = (33.72%) 3 – Very well: [44] = (51.16%) 2 – Moderately: [12] = (13.95%) 1 – Marginally: [1] = (1.16%)



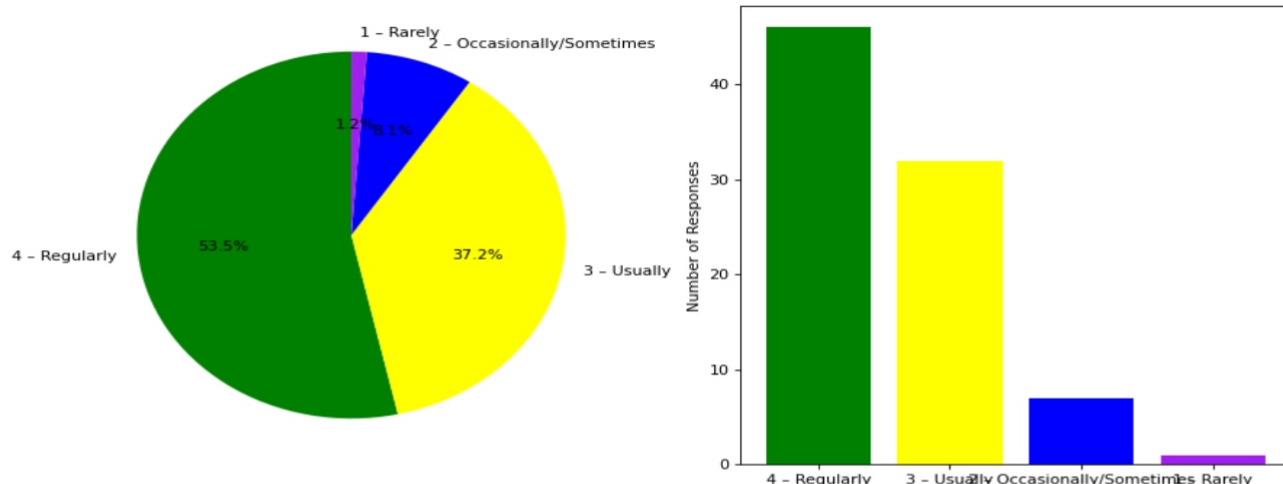
**8. Teachers inform students about expected competencies, course outcomes , programme outcomes and overall system of outcome based education(OBE)**

4 – Every time: [39] = (45.35%) 3 – Usually: [37] = (43.02%) 2– Occasionally/Sometimes: [9] = (10.47%) 1 – Rarely: [1] = (1.16%)



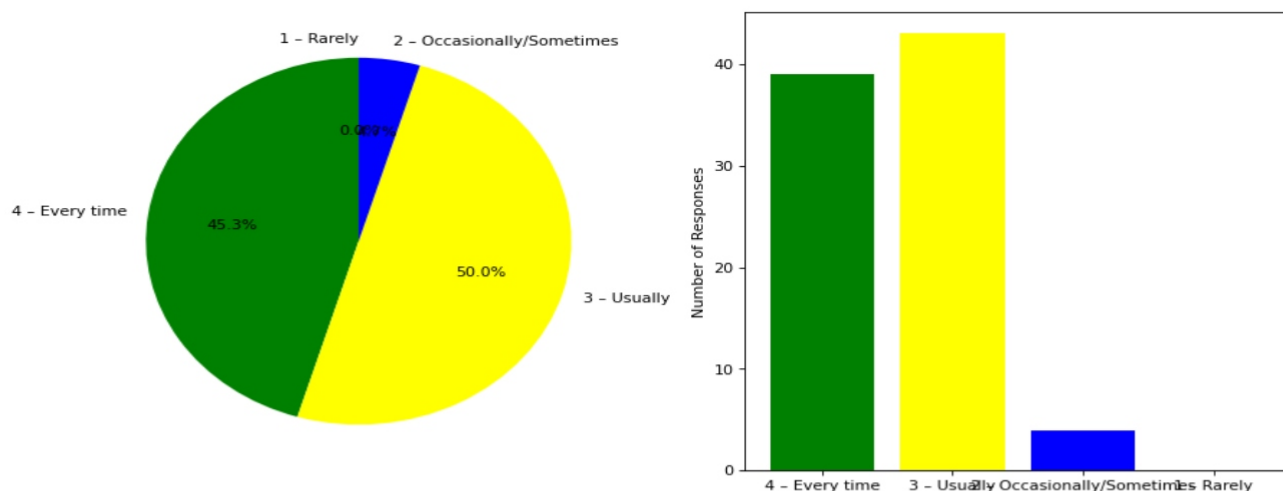
**9. Your mentor interacts with you to encourage on your strengths and counsel you to overcome your weakness by identifying them**

4 – Regularly: [46] = (53.49%) 3 – Usually: [32] = (37.21%) 2 – Occasionally/Sometimes: [7] = (8.14%) 1 – Rarely: [1] = (1.16%)



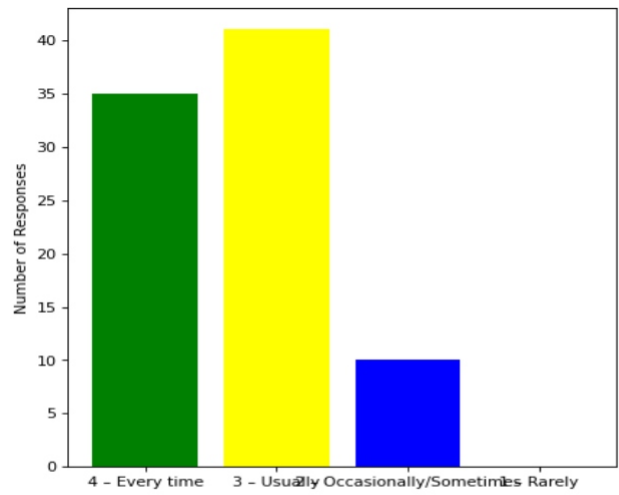
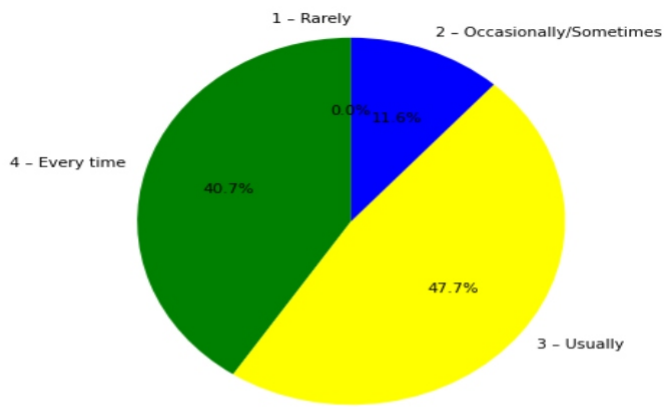
**10. The teachers illustrate the concepts through examples and applications and use student centric methods, such as experiential learning, participative learning and problem solving methodologies for enhancing learning experiences**

4 – Every time: [39] = (45.35%) 3 – Usually: [43] = (50.0%) 2 – Occasionally/Sometimes: [4] = (4.65%) 1 – Rarely: [0] = (0.0%)



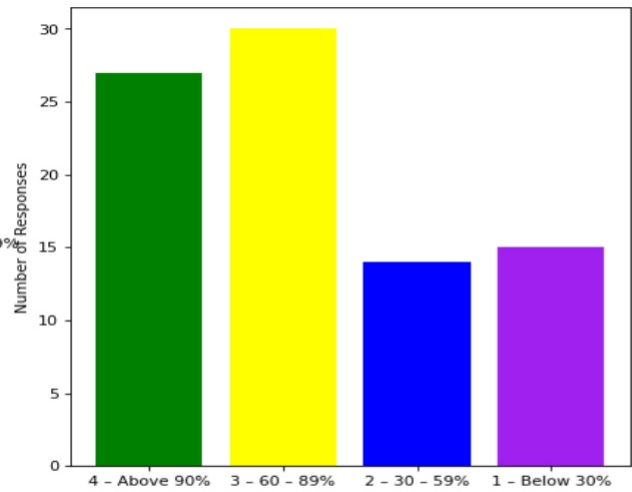
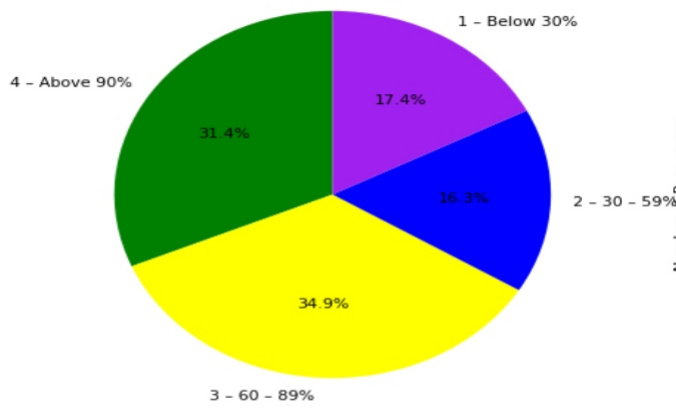
**11. The institute takes active interest in promoting internship, field visit, organizes workshop/seminar/extracurricular/co-curricular activities and helps to inculcate soft skills, life skills and employability skills for the holistic development of the students**

4 – Every time: [35] = (40.7%) 3 – Usually: [41] = (47.67%) 2 – Occasionally/Sometimes: [10] = (11.63%) 1 – Rarely: [0] = (0.0%)



**12. Percentage of teachers using ICT tools such as LCD projector, Multimedia, etc. while teaching**

4 - Above 90%: [27] = (31.4%) 3 - 60 - 89%: [30] = (34.88%) 2 - 30 - 59%: [14] = (16.28%) 1 - Below 30%: [15] = (17.44%)



This is a computer generated statement and does not require a signature.