

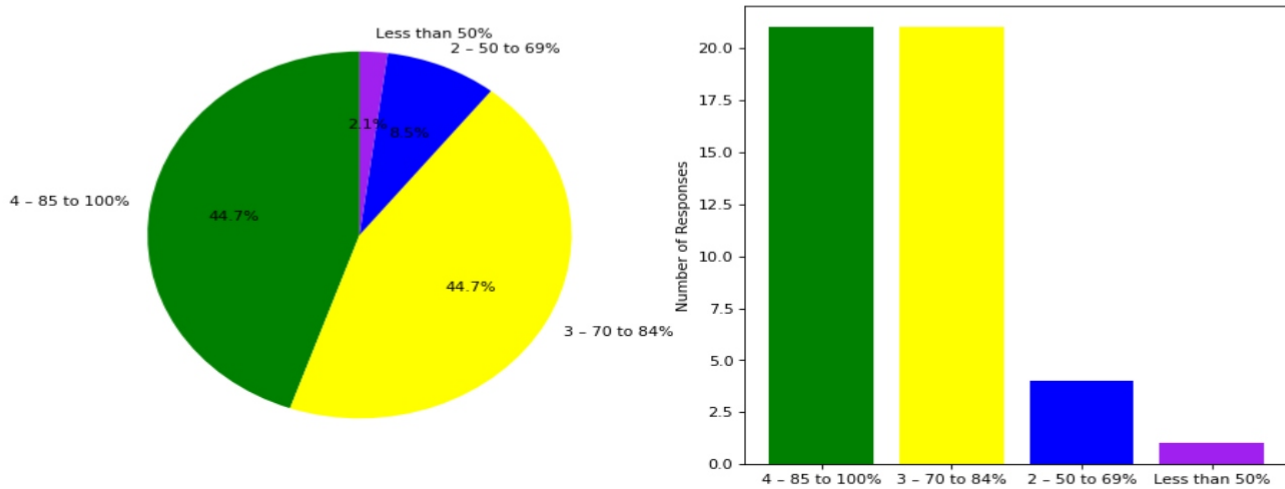


Semester End Survey  
Academic Year: 2024-25  
Department: CSE (DS)  
Semester: FIFTH

Total number of students participated in the survey: 47

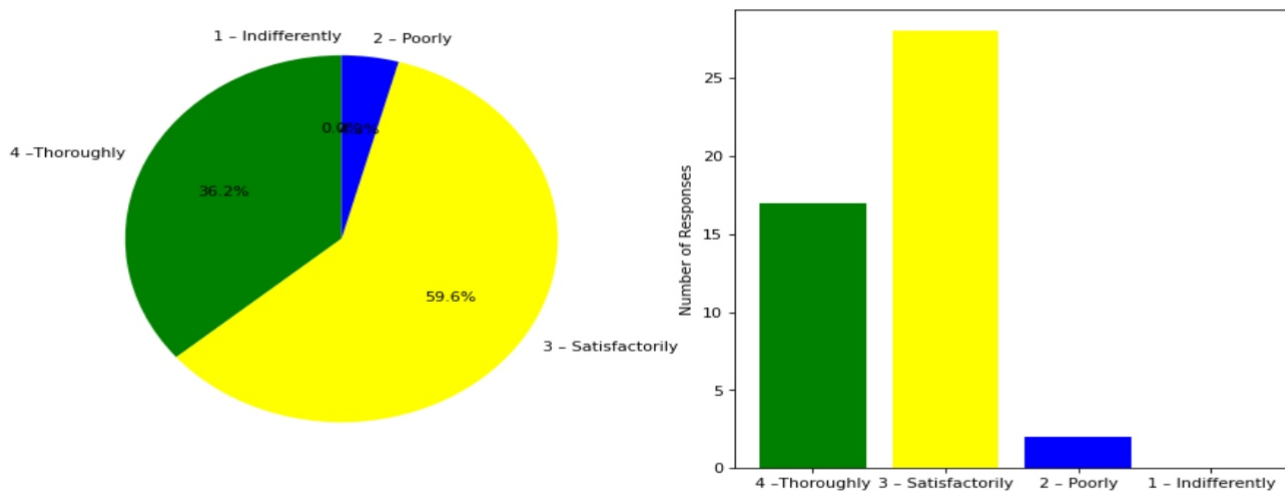
### 1. The overall syllabus coverage in the class is to an extent of

4 – 85 to 100%: [21] = (44.68%) 3 – 70 to 84%: [21] = (44.68%) 2 – 50 to 69%: [4] = (8.51%) Less than 50%: [1] = (2.13%)



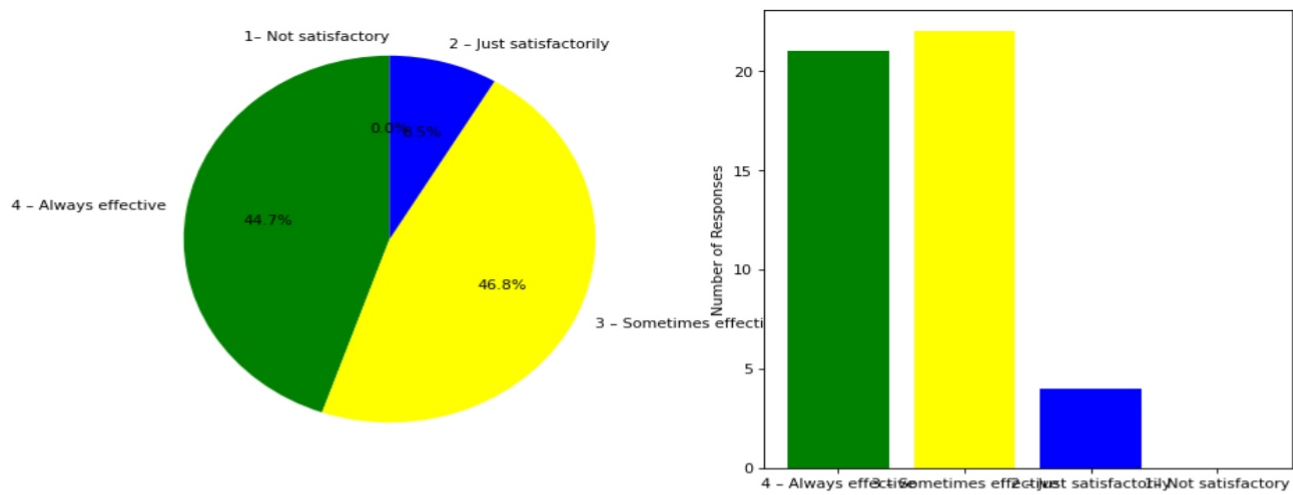
### 2. Teachers are prepared for the classes

4 –Thoroughly: [17] = (36.17%) 3 – Satisfactorily: [28] = (59.57%) 2 – Poorly: [2] = (4.26%) 1 – Indifferently: [0] = (0.0%)



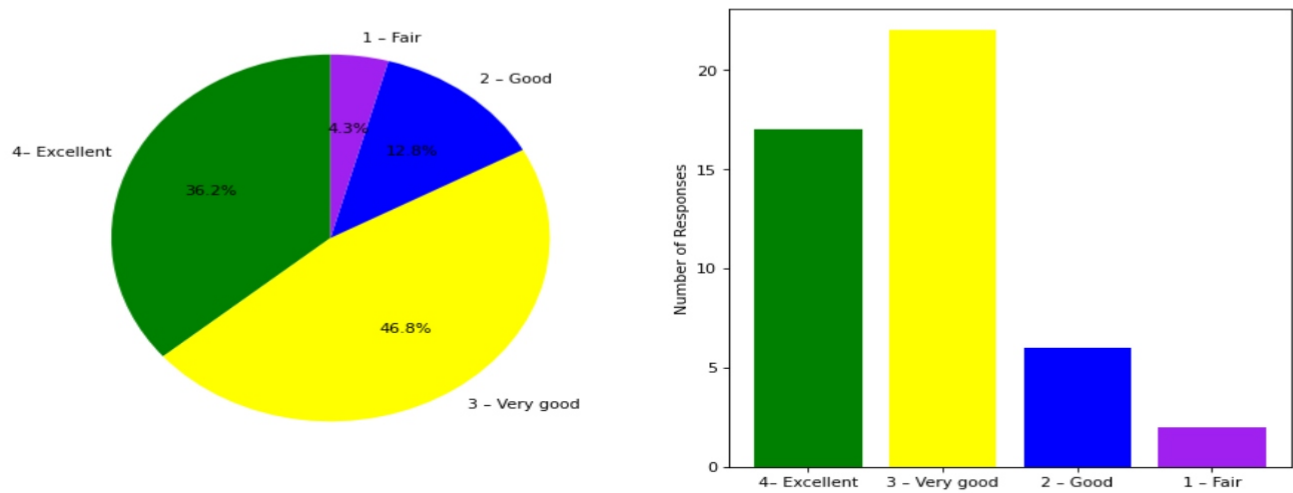
### 3. Communication of the teachers in the class and outside the class is

4 – Always effective: [21] = (44.68%) 3 – Sometimes effective: [22] = (46.81%) 2 – Just satisfactorily: [4] = (8.51%) 1 – Not satisfactory: [0] = (0.0%)



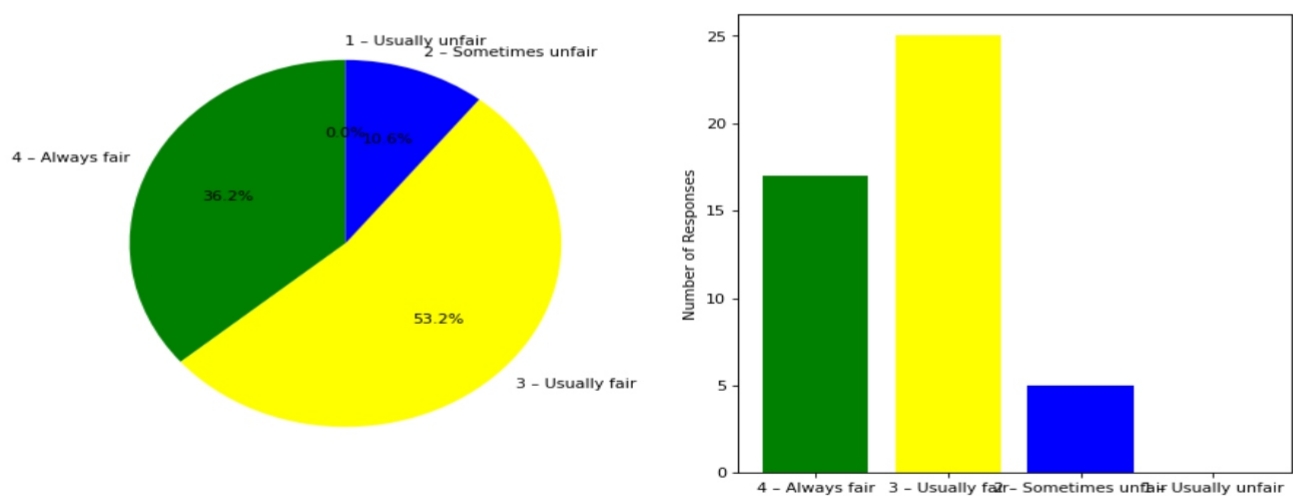
#### 4. Overall learning environment in the classes and laboratories is

4- Excellent: [17] = (36.17%) 3 - Very good: [22] = (46.81%) 2 - Good: [6] = (12.77%) 1 - Fair: [2] = (4.26%)



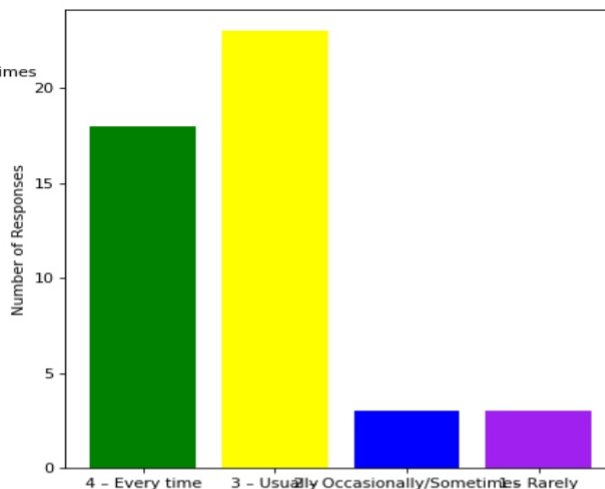
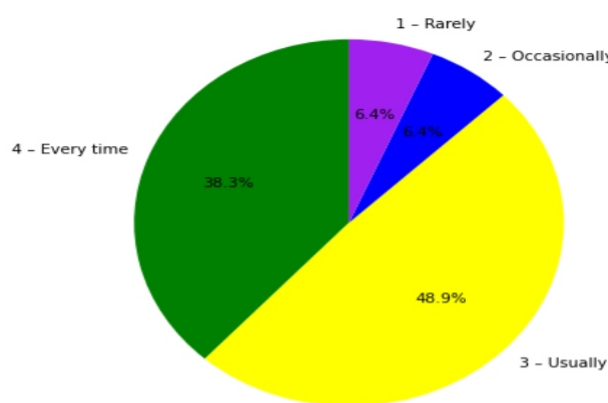
#### 5. Fairness of the internal evaluation process by the teachers is

4 - Always fair: [17] = (36.17%) 3 - Usually fair: [25] = (53.19%) 2 - Sometimes unfair: [5] = (10.64%) 1 - Usually unfair: [0] = (0.0%)



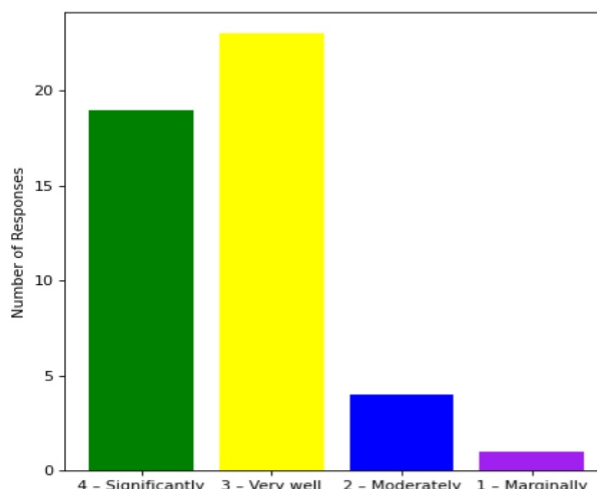
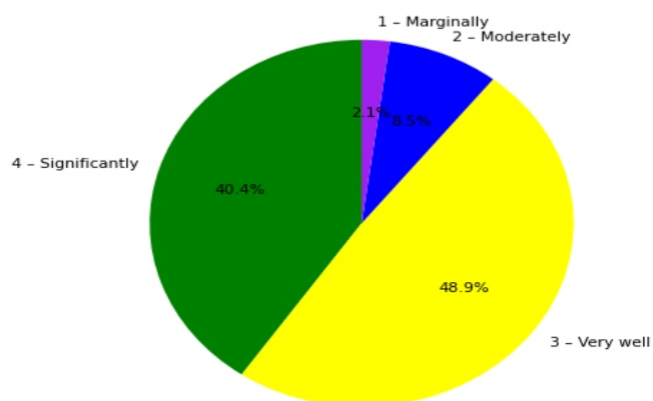
#### 6. The performance in internal evaluations and laboratory experimentation is discussed with the students

4 – Every time: [18] = (38.3%) 3 – Usually: [23] = (48.94%) 2 – Occasionally/Sometimes: [3] = (6.38%) 1 – Rarely: [3] = (6.38%)



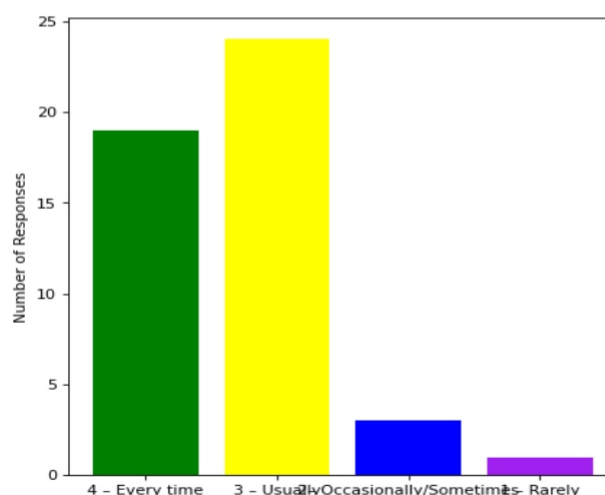
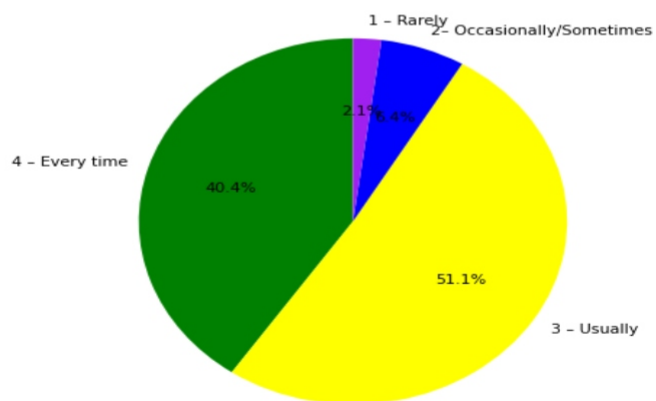
### 7. The teaching and mentoring process in the department supports the development of your cognitive, social, and emotional growth

4 – Significantly: [19] = (40.43%) 3 – Very well: [23] = (48.94%) 2 – Moderately: [4] = (8.51%) 1 – Marginally: [1] = (2.13%)



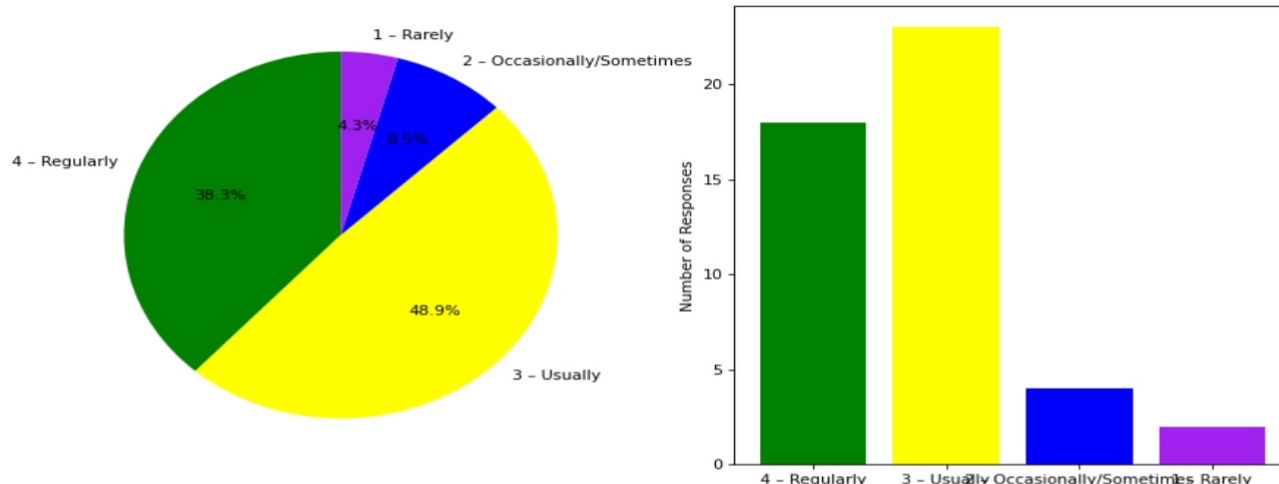
### 8. Teachers inform students about expected competencies, course outcomes , programme outcomes and overall system of outcome based education(OBE)

4 – Every time: [19] = (40.43%) 3 – Usually: [24] = (51.06%) 2– Occasionally/Sometimes: [3] = (6.38%) 1 – Rarely: [1] = (2.13%)



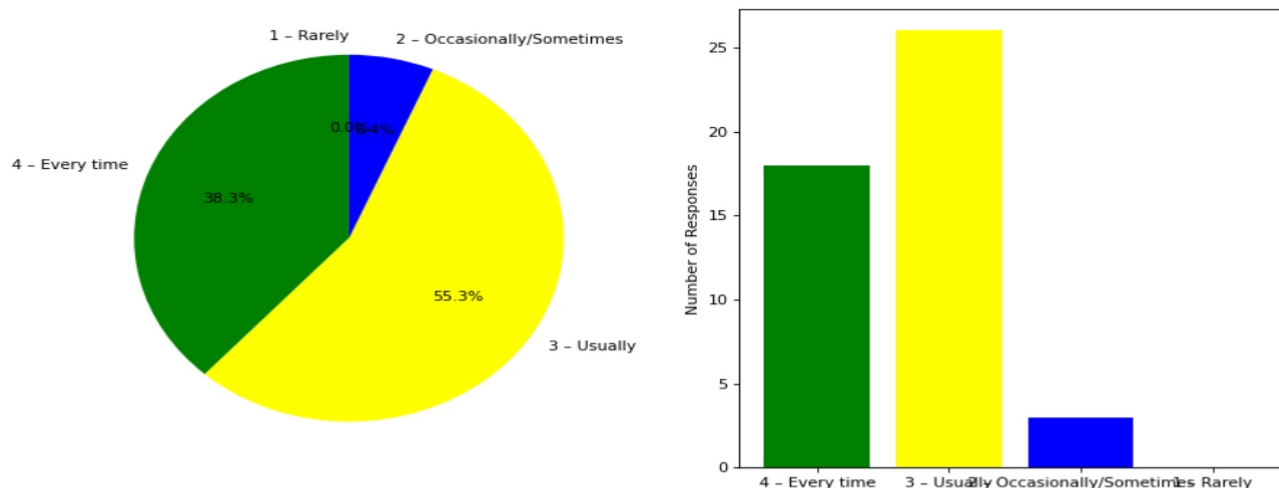
**9. Your mentor interacts with you to encourage on your strengths and counsel you to overcome your weakness by identifying them**

4 – Regularly: [18] = (38.3%) 3 – Usually: [23] = (48.94%) 2 – Occasionally/Sometimes: [4] = (8.51%) 1 – Rarely: [2] = (4.26%)



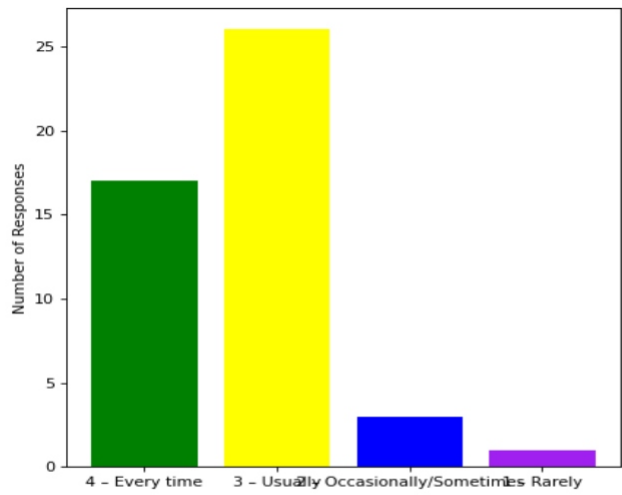
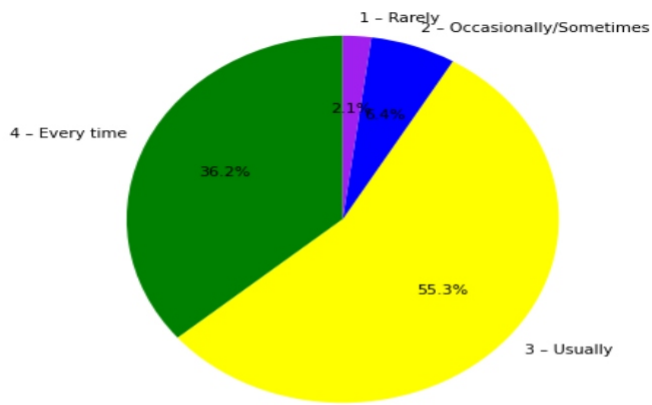
**10. The teachers illustrate the concepts through examples and applications and use student centric methods, such as experiential learning, participative learning and problem solving methodologies for enhancing learning experiences**

4 – Every time: [18] = (38.3%) 3 – Usually: [26] = (55.32%) 2 – Occasionally/Sometimes: [3] = (6.38%) 1 – Rarely: [0] = (0.0%)



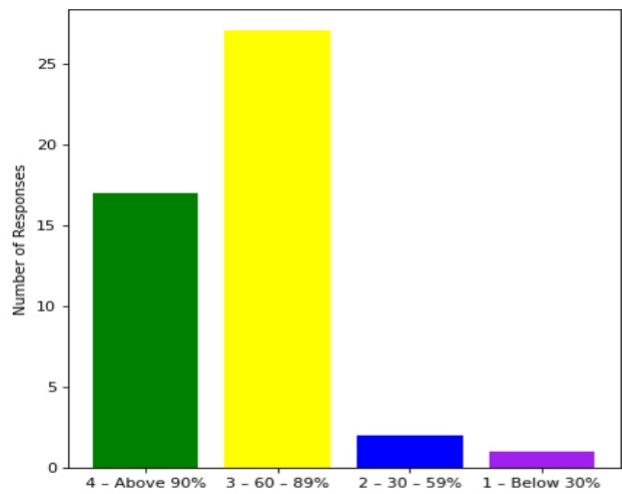
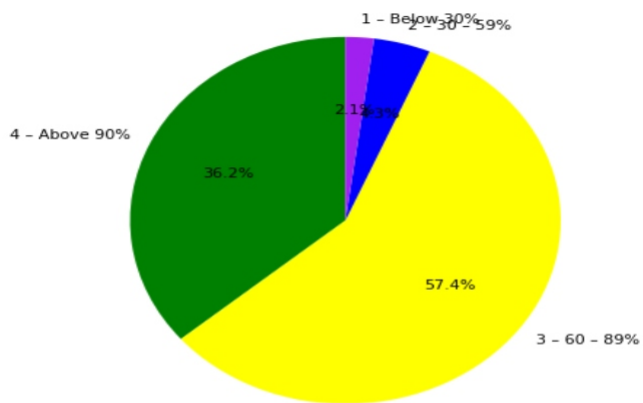
**11. The institute takes active interest in promoting internship, field visit, organizes workshop/seminar/extracurricular/co-curricular activities and helps to inculcate soft skills, life skills and employability skills for the holistic development of the students**

4 – Every time: [17] = (36.17%) 3 – Usually: [26] = (55.32%) 2 – Occasionally/Sometimes: [3] = (6.38%) 1 – Rarely: [1] = (2.13%)



**12. Percentage of teachers using ICT tools such as LCD projector, Multimedia, etc. while teaching**

4 - Above 90%: [17] = (36.17%) 3 - 60 - 89%: [27] = (57.45%) 2 - 30 - 59%: [2] = (4.26%) 1 - Below 30%: [1] = (2.13%)



This is a computer generated statement and does not require a signature.