



Semester End Survey

Academic Year: 2024-25

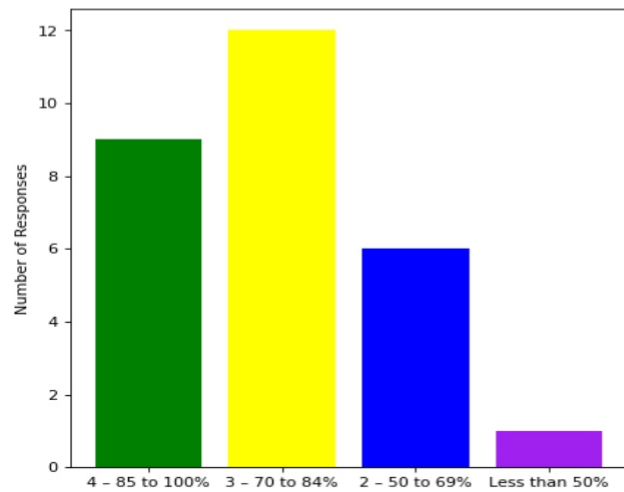
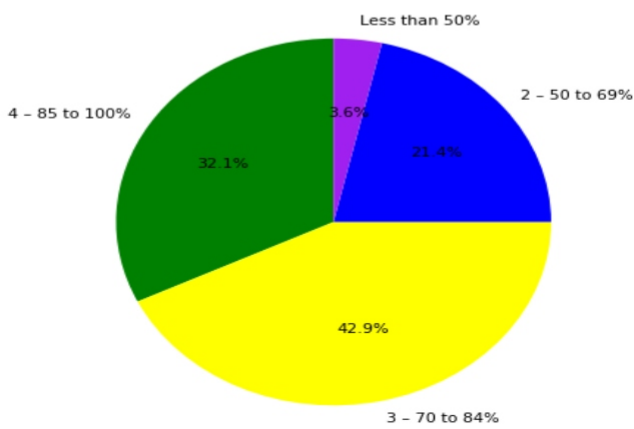
Department: CSD

Semester: FIFTH

Total number of students participated in the survey: 28

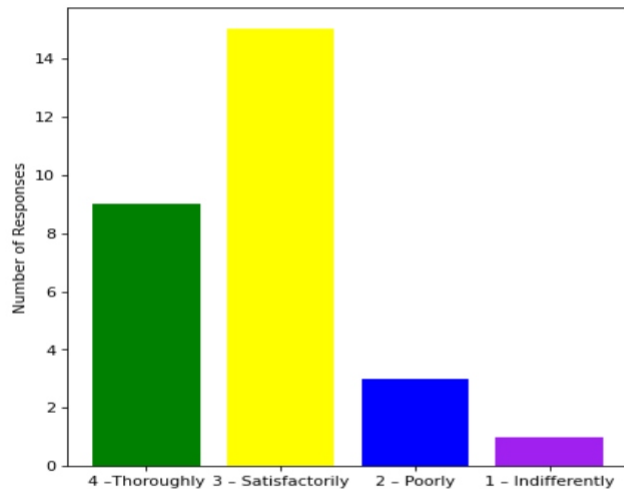
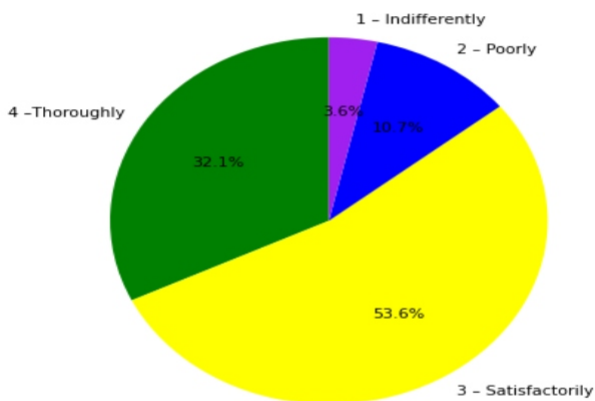
1. The overall syllabus coverage in the class is to an extent of

4 – 85 to 100%: [9] = (32.14%) 3 – 70 to 84%: [12] = (42.86%) 2 – 50 to 69%: [6] = (21.43%) Less than 50%: [1] = (3.57%)



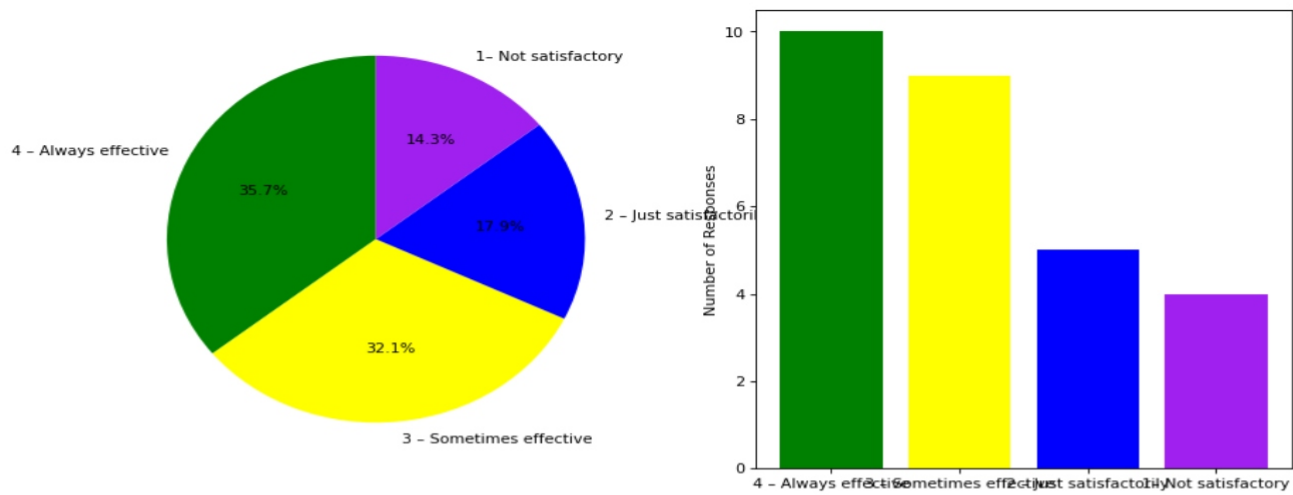
2. Teachers are prepared for the classes

4 –Thoroughly: [9] = (32.14%) 3 – Satisfactorily: [15] = (53.57%) 2 – Poorly: [3] = (10.71%) 1 – Indifferently: [1] = (3.57%)



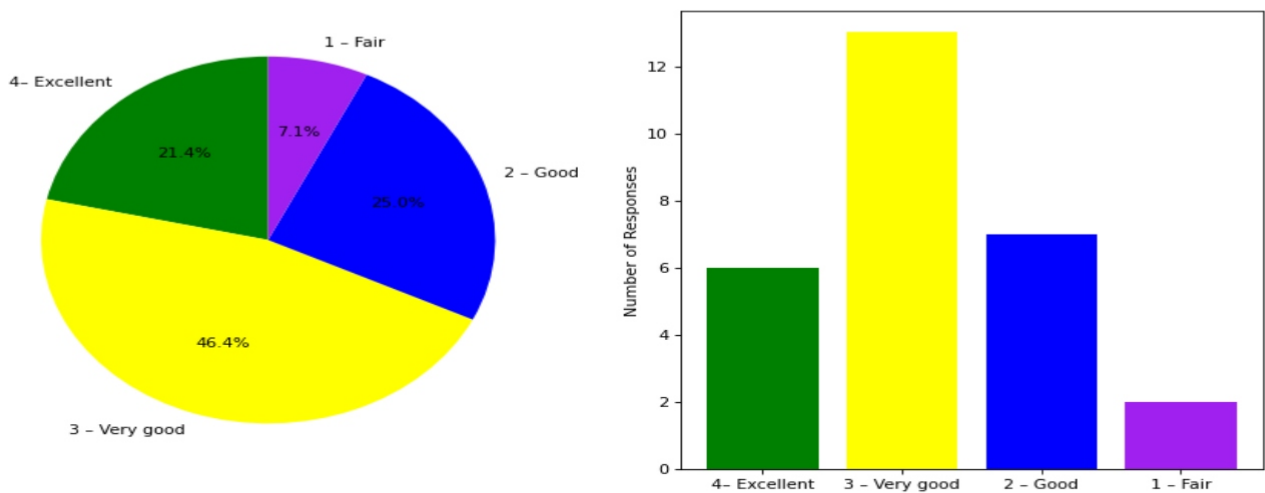
3. Communication of the teachers in the class and outside the class is

4 – Always effective: [10] = (35.71%) 3 – Sometimes effective: [9] = (32.14%) 2 – Just satisfactory: [5] = (17.86%) 1 – Not satisfactory: [4] = (14.29%)



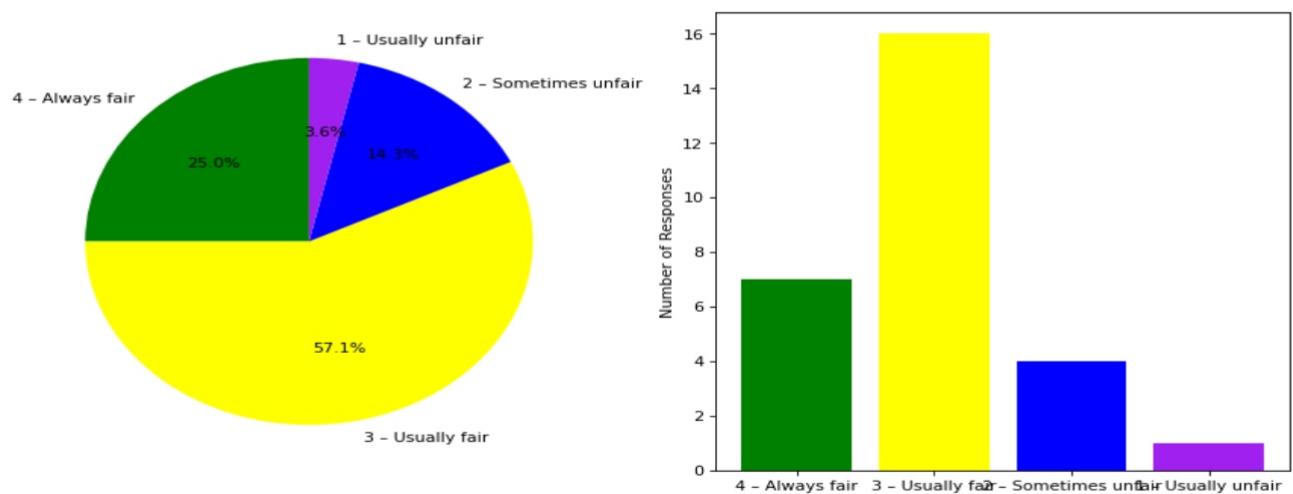
4. Overall learning environment in the classes and laboratories is

4 - Excellent: [6] = (21.43%) 3 - Very good: [13] = (46.43%) 2 - Good: [7] = (25.0%) 1 - Fair: [2] = (7.14%)



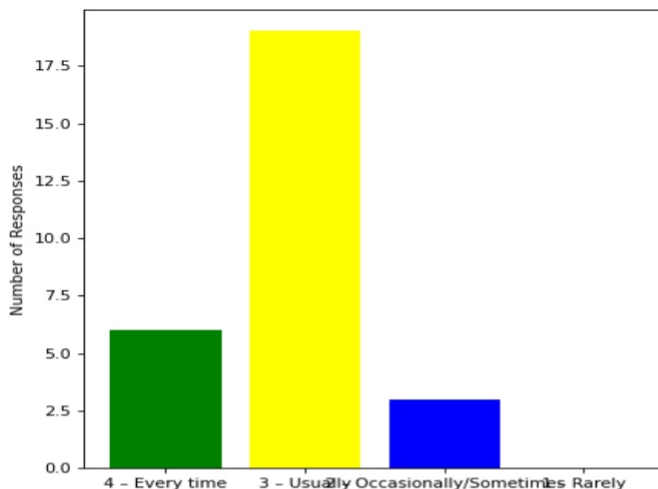
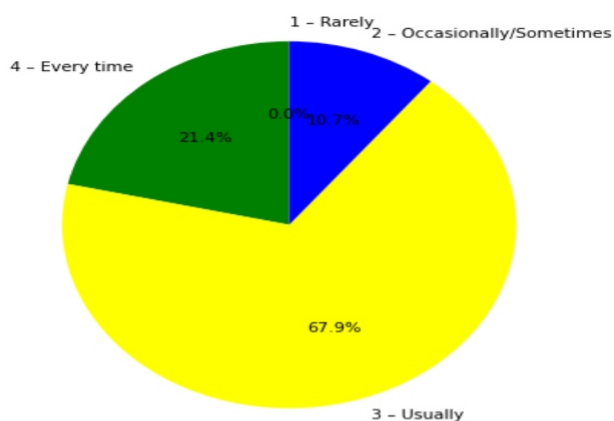
5. Fairness of the internal evaluation process by the teachers is

4 - Always fair: [7] = (25.0%) 3 - Usually fair: [16] = (57.14%) 2 - Sometimes unfair: [4] = (14.29%) 1 - Usually unfair: [1] = (3.57%)



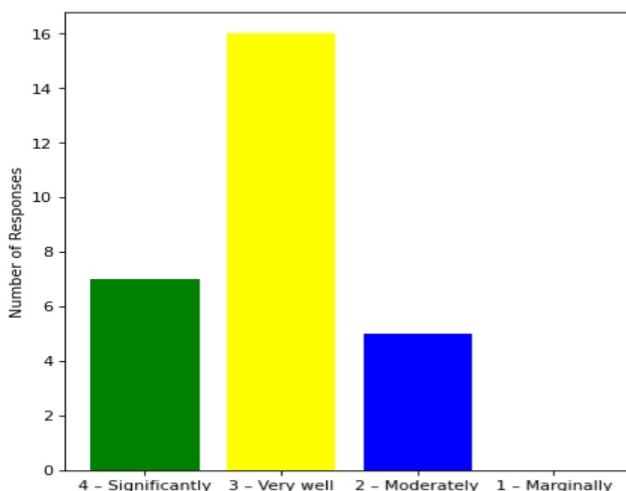
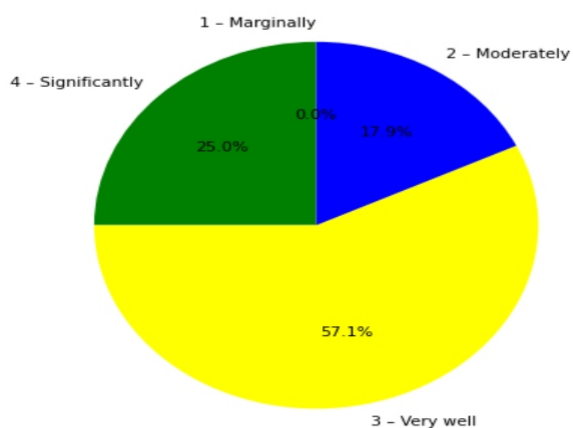
6. The performance in internal evaluations and laboratory experimentation is discussed with the students

4 – Every time: [6] = (21.43%) 3 – Usually: [19] = (67.86%) 2 – Occasionally/Sometimes: [3] = (10.71%) 1 – Rarely: [0] = (0.0%)



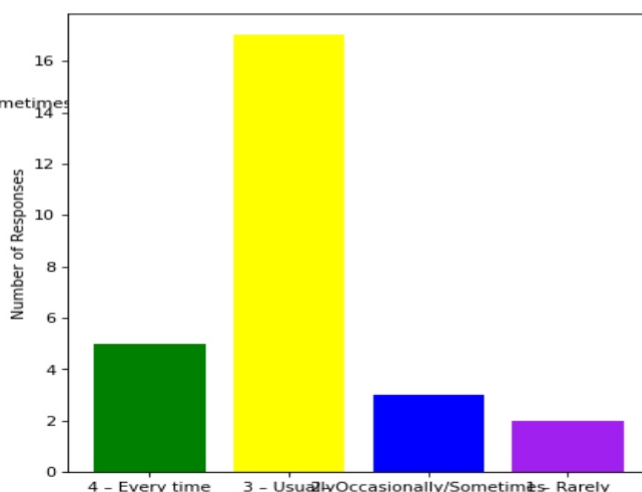
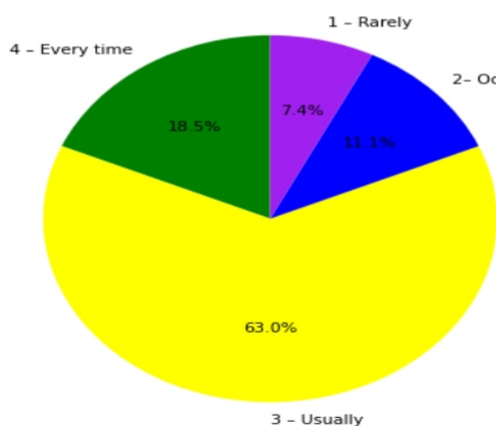
7. The teaching and mentoring process in the department supports the development of your cognitive, social, and emotional growth

4 – Significantly: [7] = (25.0%) 3 – Very well: [16] = (57.14%) 2 – Moderately: [5] = (17.86%) 1 – Marginally: [0] = (0.0%)



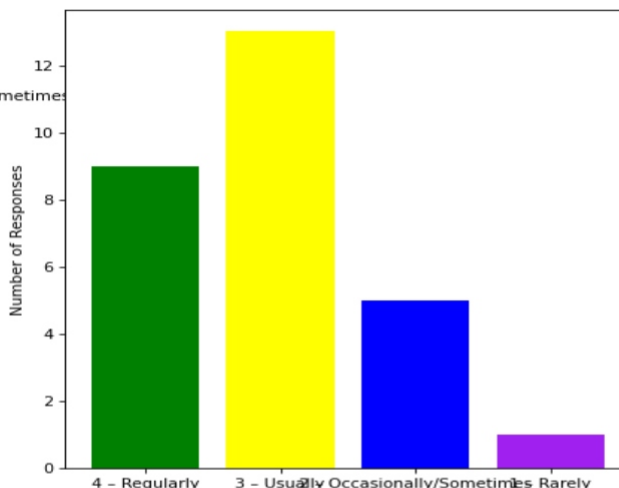
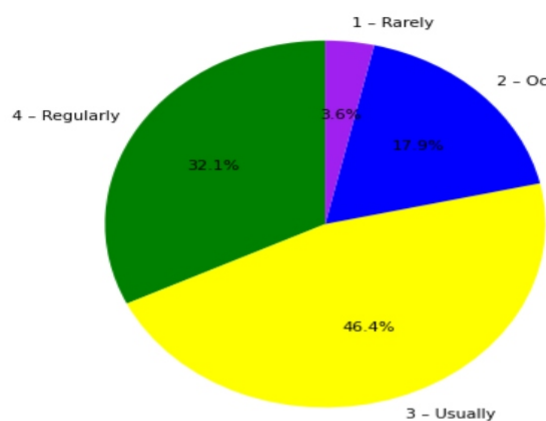
8. Teachers inform students about expected competencies, course outcomes, programme outcomes and overall system of outcome based education(OBE)

4 – Every time: [5] = (18.52%) 3 – Usually: [17] = (62.96%) 2 – Occasionally/Sometimes: [3] = (11.11%) 1 – Rarely: [2] = (7.41%)



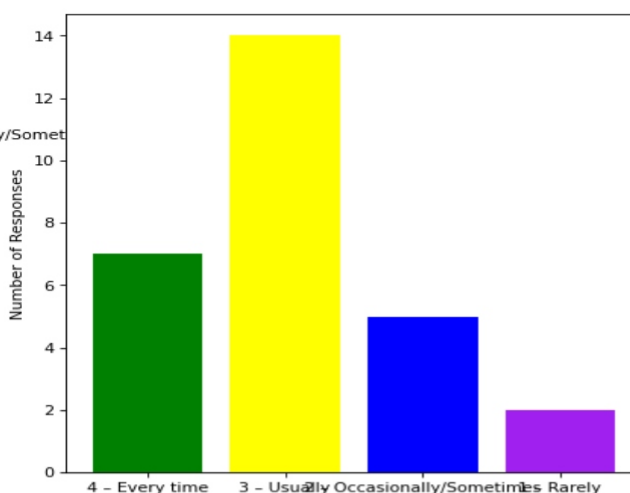
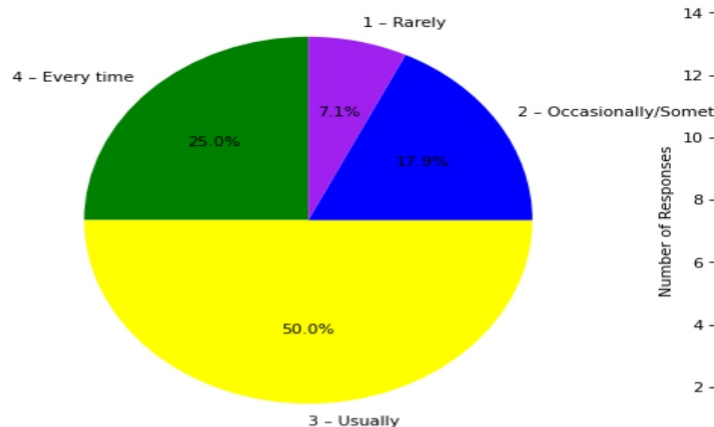
9. Your mentor interacts with you to encourage on your strengths and counsel you to overcome your weakness by identifying them

4 – Regularly: [9] = (32.14%) 3 – Usually: [13] = (46.43%) 2 – Occasionally/Sometimes: [5] = (17.86%) 1 – Rarely: [1] = (3.57%)



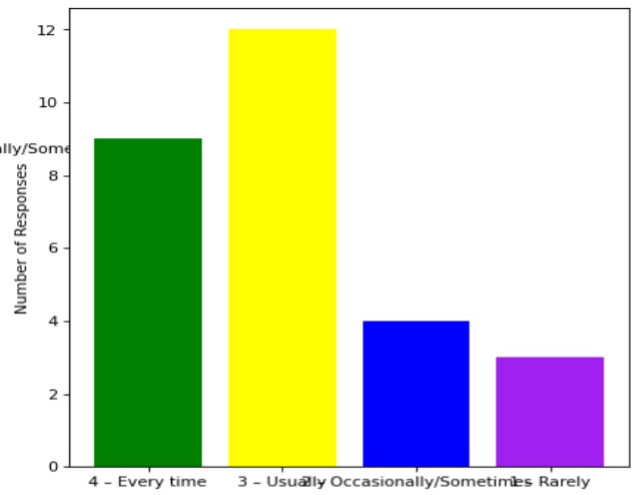
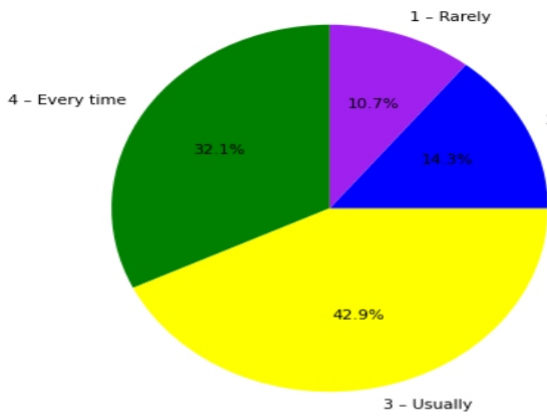
10. The teachers illustrate the concepts through examples and applications and use student centric methods, such as experiential learning, participative learning and problem solving methodologies for enhancing learning experiences

4 – Every time: [7] = (25.0%) 3 – Usually: [14] = (50.0%) 2 – Occasionally/Sometimes: [5] = (17.86%) 1 – Rarely: [2] = (7.14%)



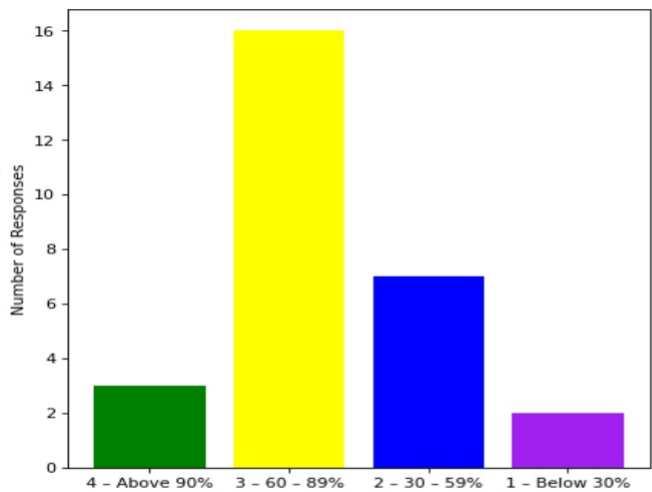
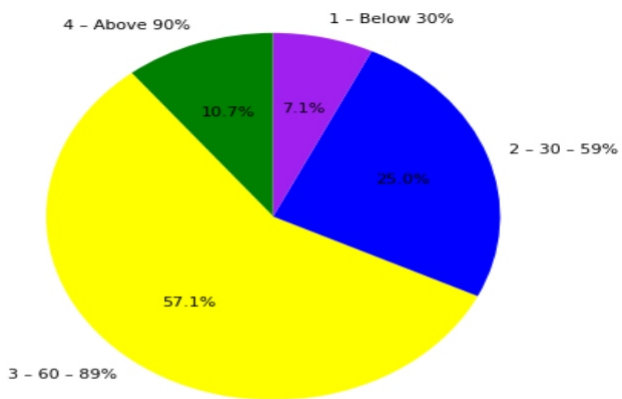
11. The institute takes active interest in promoting internship, field visit, organizes workshop/seminar/extracurricular/co-curricular activities and helps to inculcate soft skills, life skills and employability skills for the holistic development of the students

4 – Every time: [9] = (32.14%) 3 – Usually: [12] = (42.86%) 2 – Occasionally/Sometimes: [4] = (14.29%) 1 – Rarely: [3] = (10.71%)



12. Percentage of teachers using ICT tools such as LCD projector, Multimedia, etc. while teaching

4 - Above 90%: [3] = (10.71%) 3 - 60 - 89%: [16] = (57.14%) 2 - 30 - 59%: [7] = (25.0%) 1 - Below 30%: [2] = (7.14%)



This is a computer generated statement and does not require a signature.