



Semester End Survey

Academic Year: 2024-25

Department: CSE (AIML)

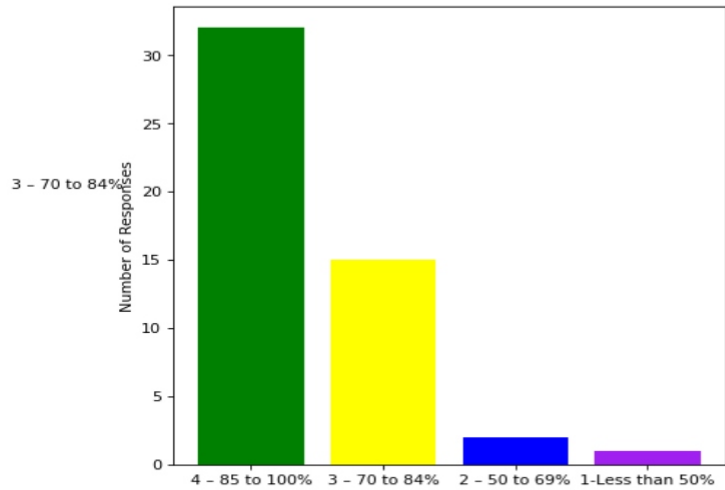
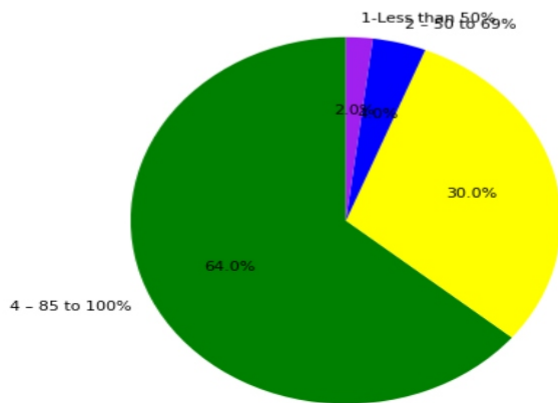
Semester: SECOND

Total number of students participated in the survey: 49

Feedback on Academics

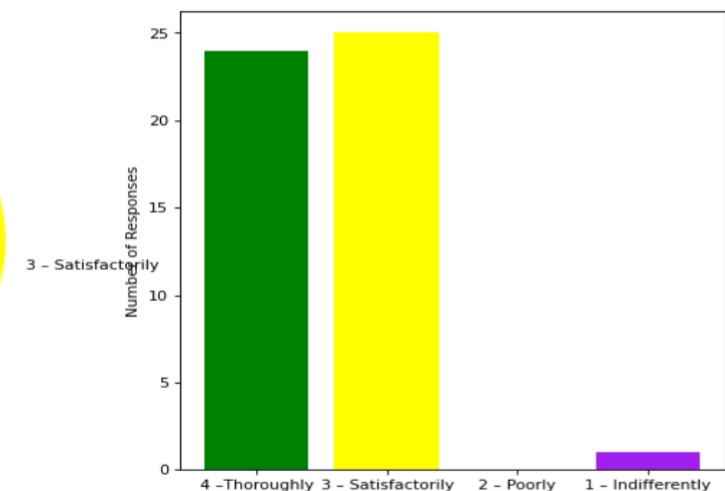
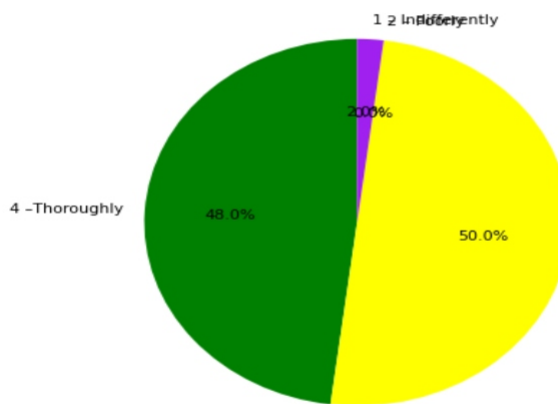
1. The overall syllabus coverage in the class is to an extent of

4 – 85 to 100%: [32] = (64.0%) 3 – 70 to 84%: [15] = (30.0%) 2 – 50 to 69%: [2] = (4.0%) 1-Less than 50%: [1] = (2.0%)



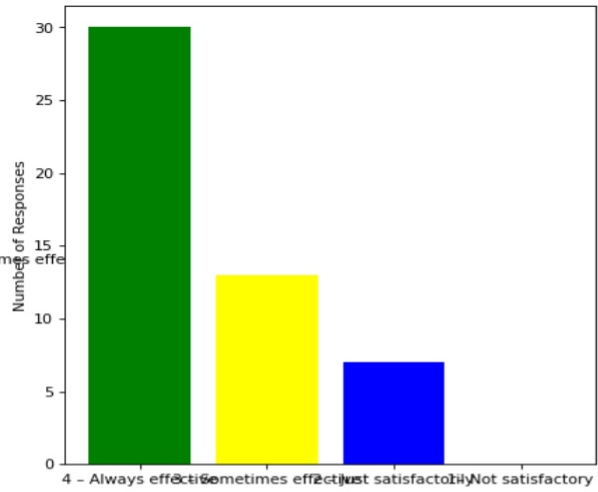
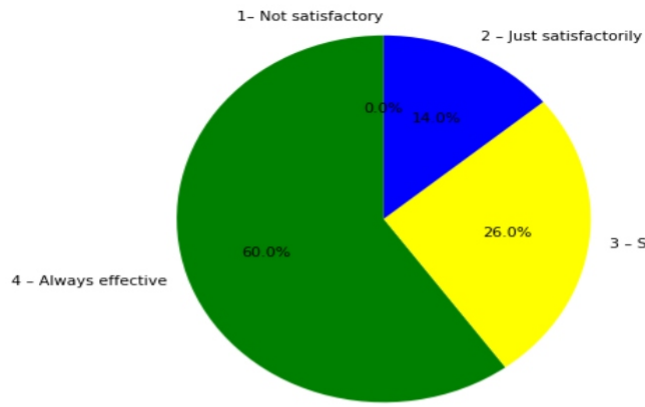
2. Teachers are prepared for the classes

4 –Thoroughly: [24] = (48.0%) 3 – Satisfactorily: [25] = (50.0%) 2 – Poorly: [0] = (0.0%) 1 – Indifferently: [1] = (2.0%)



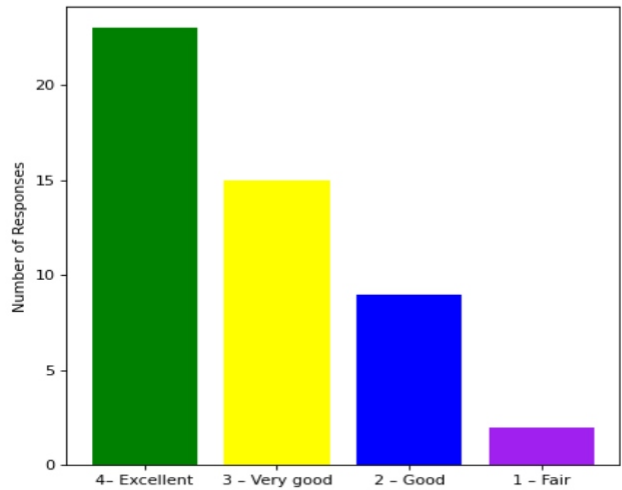
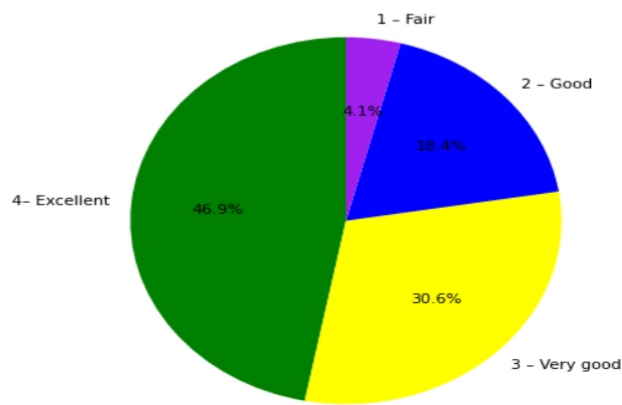
3. Communication of the teachers in the class and outside the class is

4 – Always effective: [30] = (60.0%) 3 – Sometimes effective: [13] = (26.0%) 2 – Just satisfactorily: [7] = (14.0%) 1– Not satisfactory: [0] = (0.0%)



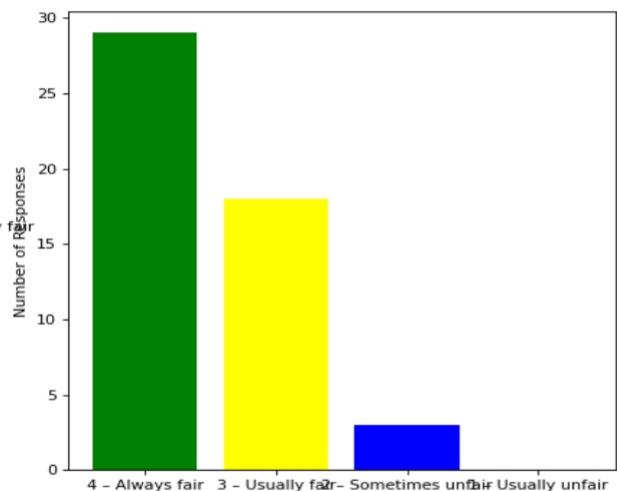
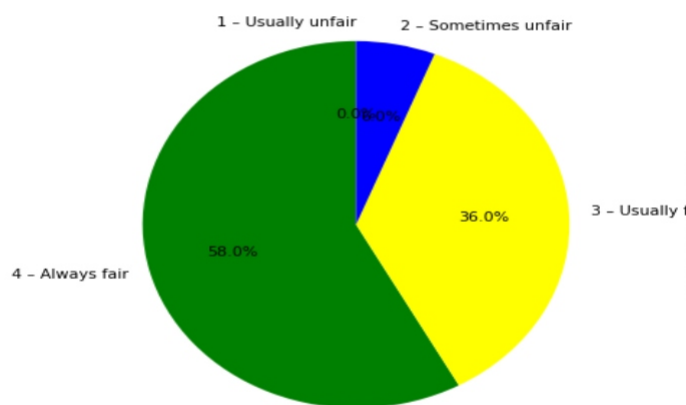
4. Overall learning environment in the classes and laboratories is

4 - Excellent: [23] = (46.94%) 3 - Very good: [15] = (30.61%) 2 - Good: [9] = (18.37%) 1 - Fair: [2] = (4.08%)



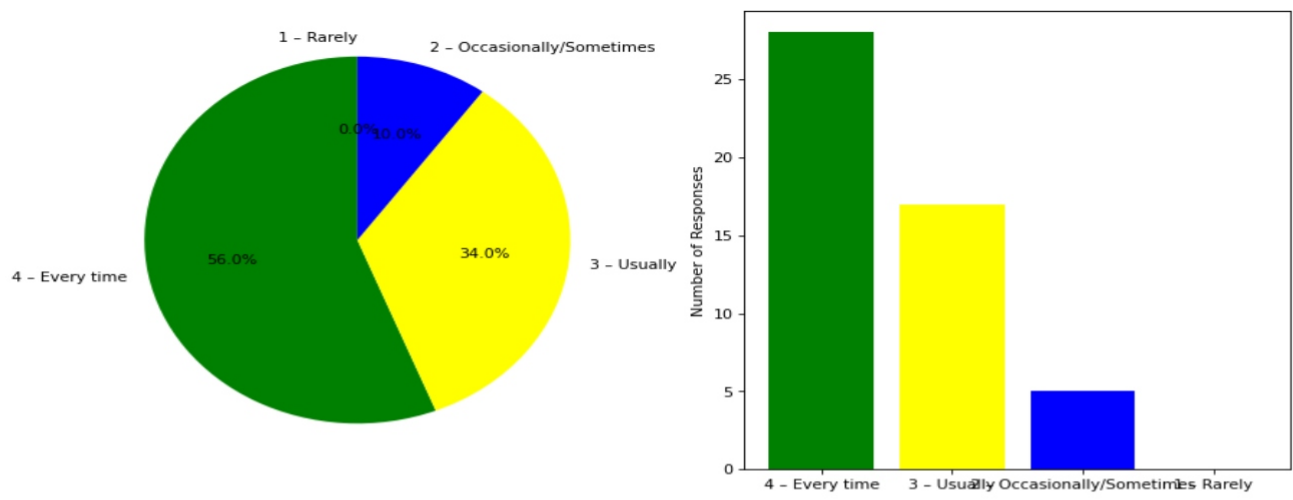
5. Fairness of the internal evaluation process by the teachers is

4 - Always fair: [29] = (58.0%) 3 - Usually fair: [18] = (36.0%) 2 - Sometimes unfair: [3] = (6.0%) 1 - Usually unfair: [0] = (0.0%)



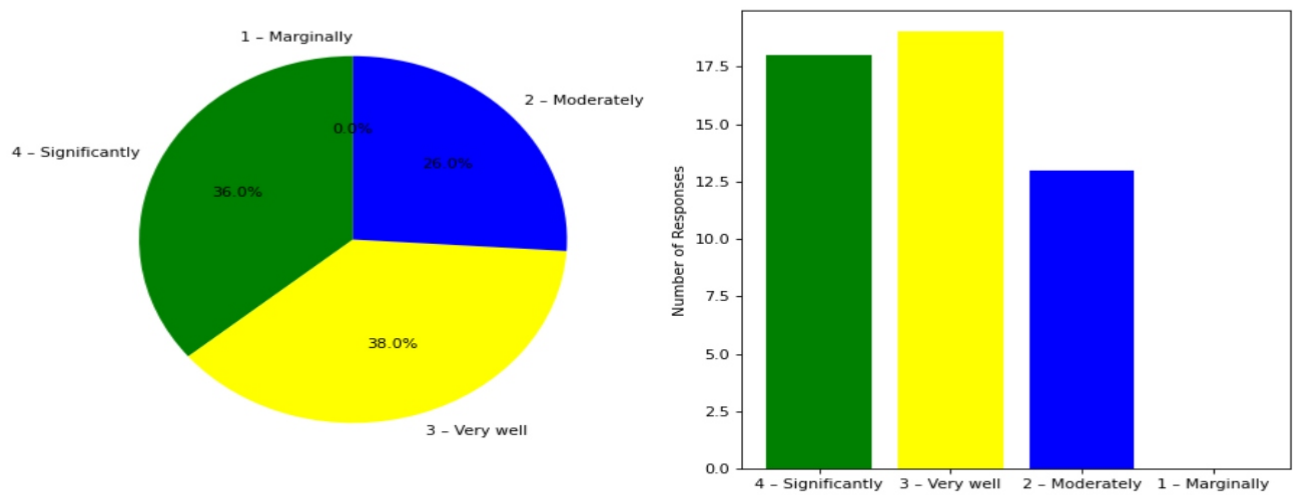
6. The performance in internal evaluations and laboratory experimentation is discussed with the students

4 - Every time: [28] = (56.0%) 3 - Usually: [17] = (34.0%) 2 - Occasionally/Sometimes: [5] = (10.0%) 1 - Rarely: [0] = (0.0%)



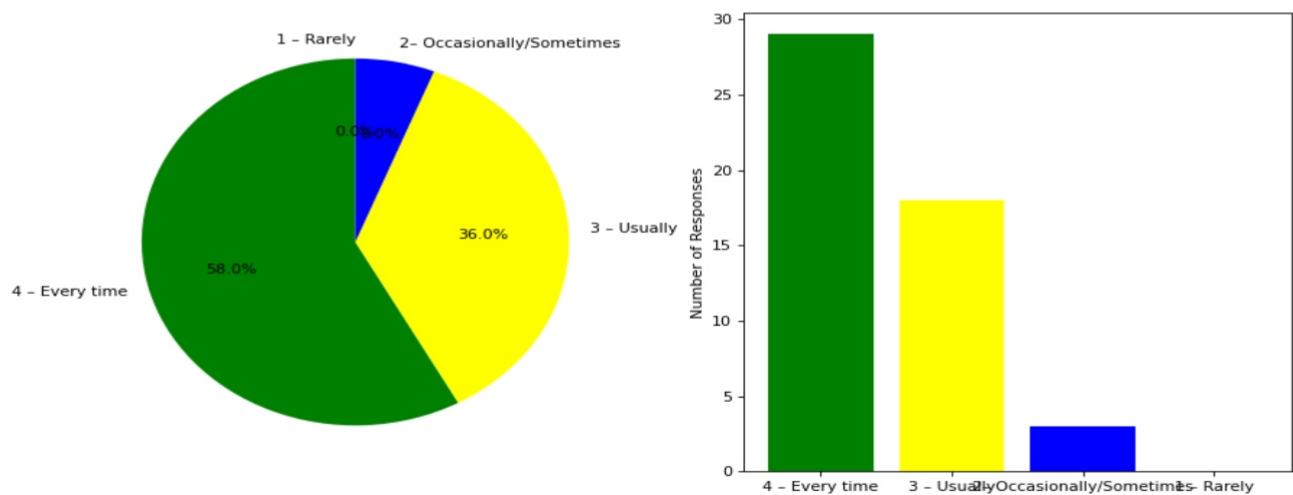
7. The teaching and mentoring process in the department supports the development of your cognitive, social, and emotional growth

4 – Significantly: [18] = (36.0%) 3 – Very well: [19] = (38.0%) 2 – Moderately: [13] = (26.0%) 1 – Marginally: [0] = (0.0%)



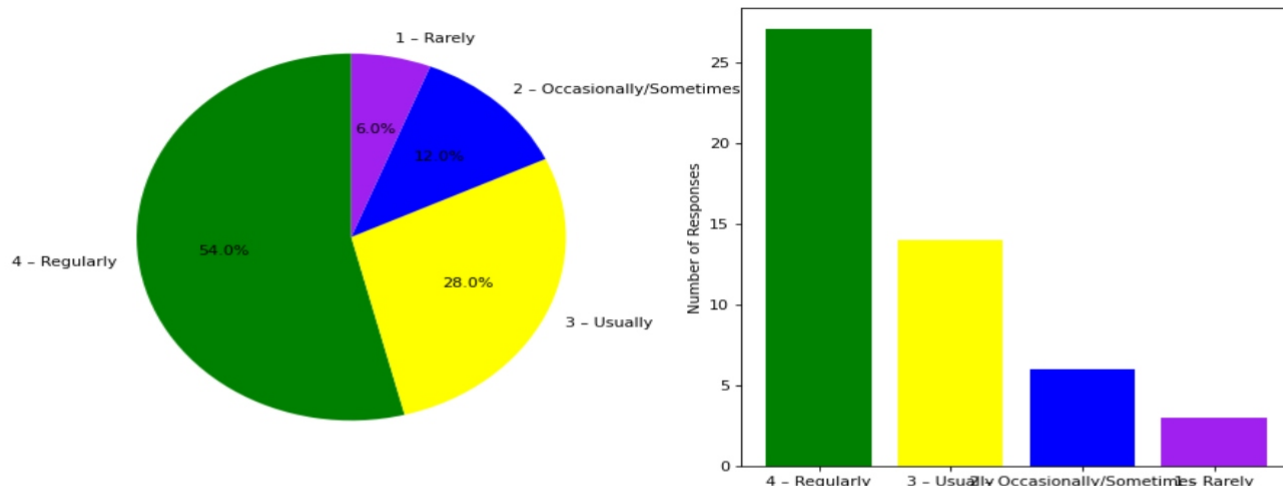
8. Teachers inform students about expected competencies, course outcomes , programme outcomes and overall system of outcome based education(OBE)

4 – Every time: [29] = (58.0%) 3 – Usually: [18] = (36.0%) 2– Occasionally/Sometimes: [3] = (6.0%) 1 – Rarely: [0] = (0.0%)



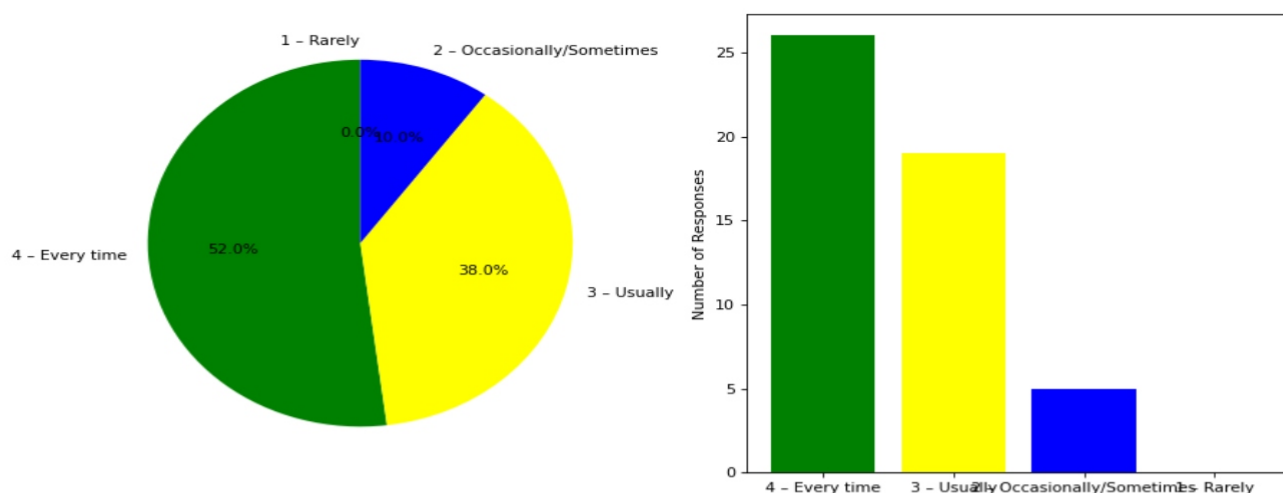
9. Your mentor interacts with you to encourage on your strengths and counsel you to overcome your weakness by identifying them

4 – Regularly: [27] = (54.0%) 3 – Usually: [14] = (28.0%) 2 – Occasionally/Sometimes: [6] = (12.0%) 1 – Rarely: [3] = (6.0%)



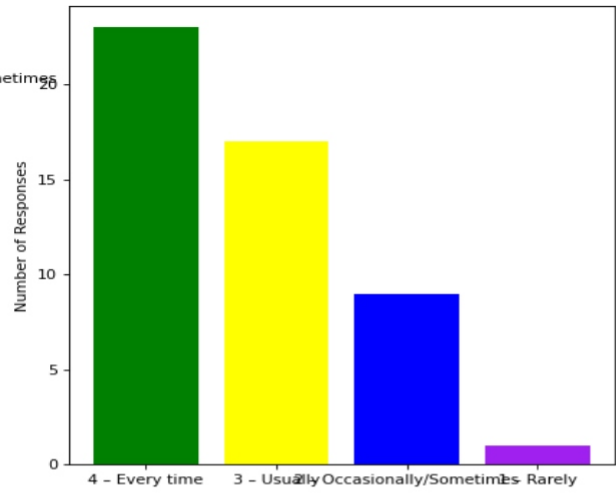
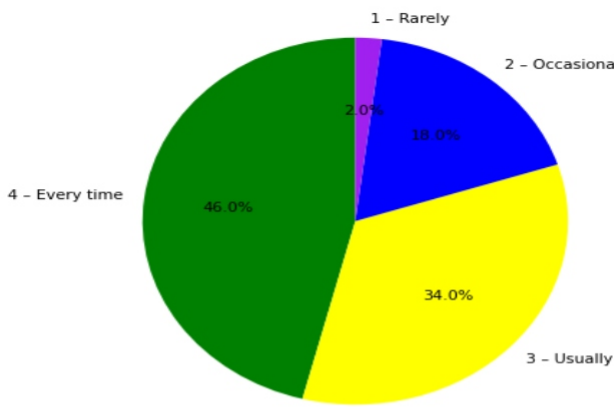
10. The teachers illustrate the concepts through examples and applications and use student centric methods, such as experiential learning, participative learning and problem solving methodologies for enhancing learning experiences

4 – Every time: [26] = (52.0%) 3 – Usually: [19] = (38.0%) 2 – Occasionally/Sometimes: [5] = (10.0%) 1 – Rarely: [0] = (0.0%)



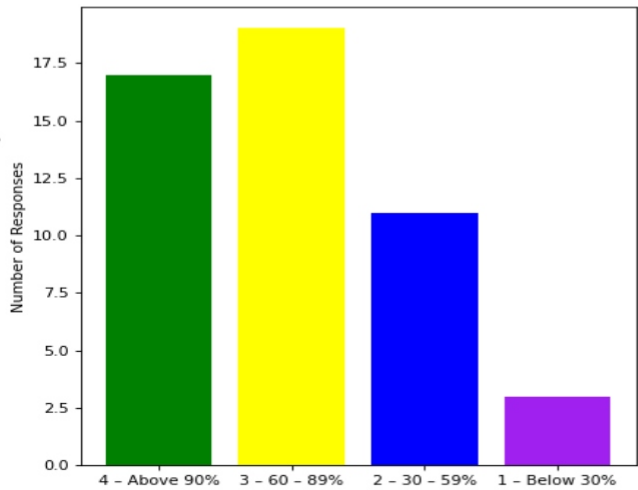
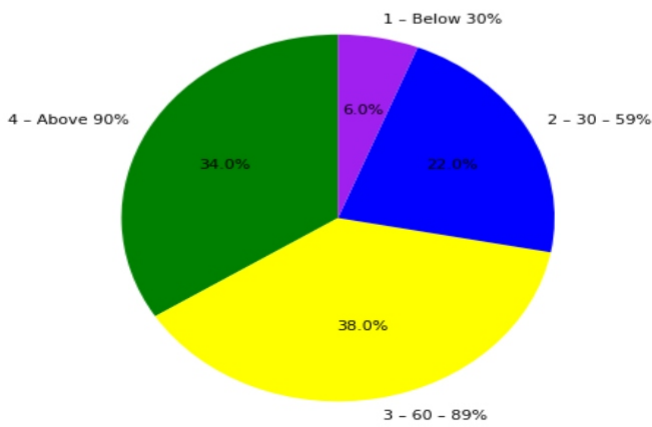
11. The institute takes active interest in promoting internship, field visit, organizes workshop/seminar/extracurricular/co-curricular activities and helps to inculcate soft skills, life skills and employability skills for the holistic development of the students

4 – Every time: [23] = (46.0%) 3 – Usually: [17] = (34.0%) 2 – Occasionally/Sometimes: [9] = (18.0%) 1 – Rarely: [1] = (2.0%)



12. Percentage of teachers using ICT tools such as LCD projector, Multimedia, etc. while teaching

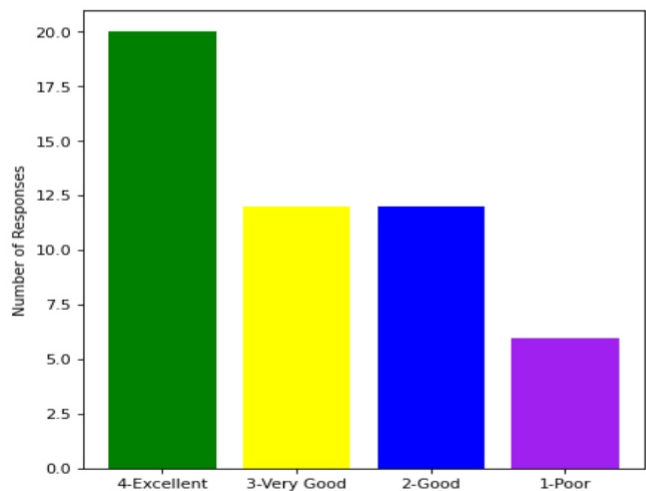
4 – Above 90%: [17] = (34.0%) 3 – 60 – 89%: [19] = (38.0%) 2 – 30 – 59%: [11] = (22.0%) 1 – Below 30%: [3] = (6.0%)



Feedback on Facilities

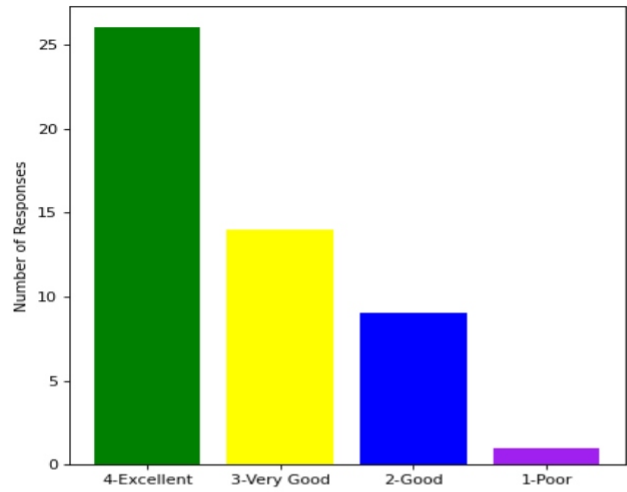
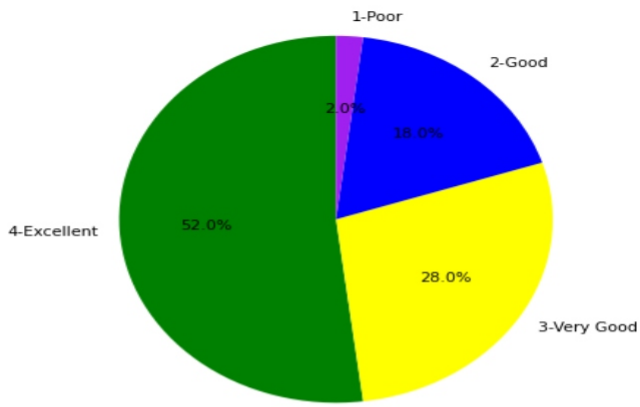
13. Class room facility

4-Excellent: [20] = (40.0%) 3-Very Good: [12] = (24.0%) 2-Good: [12] = (24.0%) 1-Poor: [6] = (12.0%)



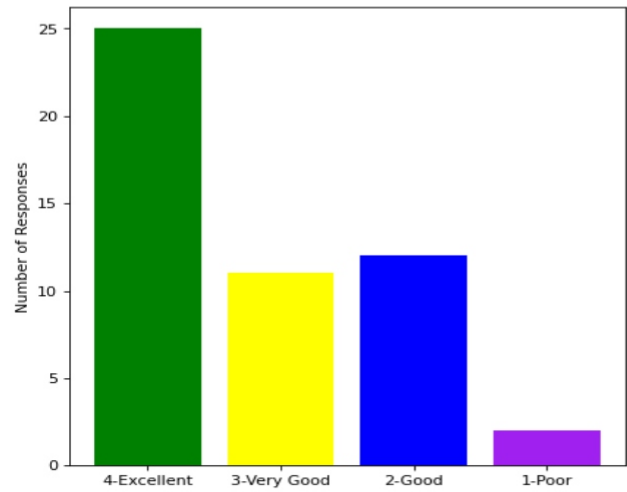
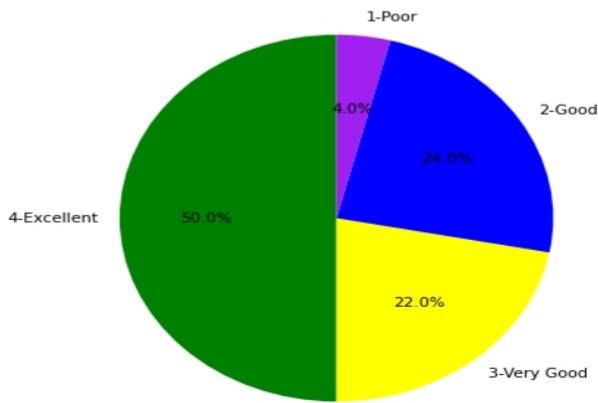
14. Laboratory facility

4-Excellent: [26] = (52.0%) 3-Very Good: [14] = (28.0%) 2-Good: [9] = (18.0%) 1-Poor: [1] = (2.0%)



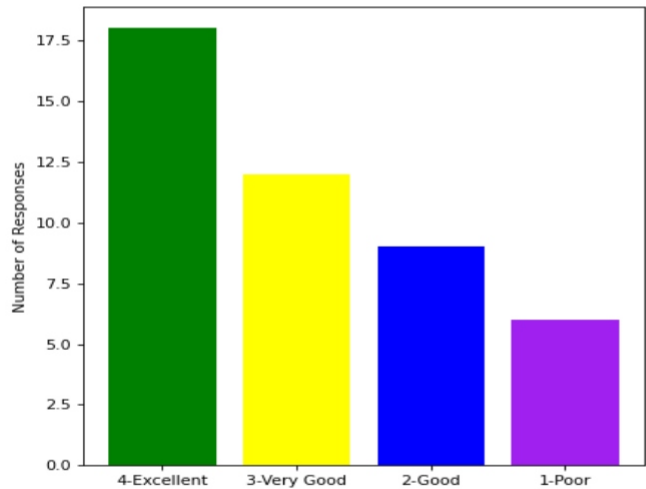
15. Library facility

4-Excellent: [25] = (50.0%) 3-Very Good: [11] = (22.0%) 2-Good: [12] = (24.0%) 1-Poor: [2] = (4.0%)



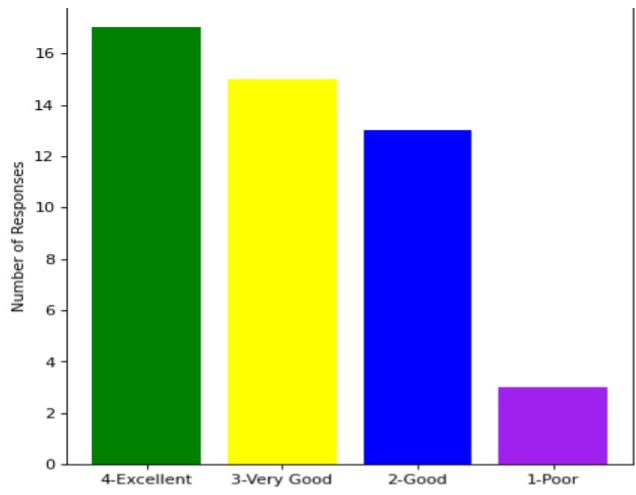
16. Hostel facility

4-Excellent: [18] = (40.0%) 3-Very Good: [12] = (26.67%) 2-Good: [9] = (20.0%) 1-Poor: [6] = (13.33%)



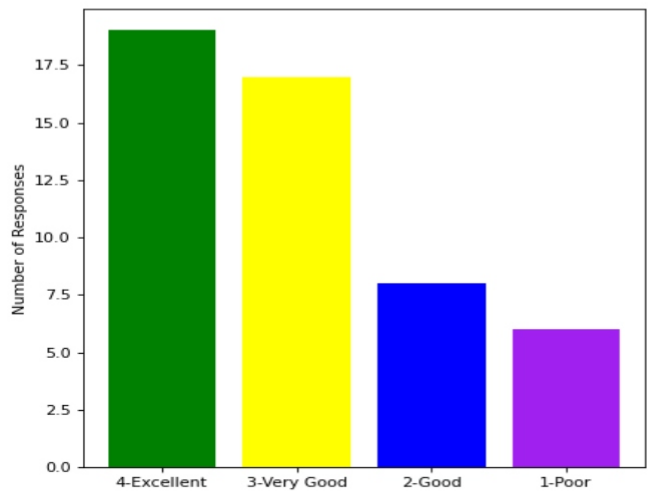
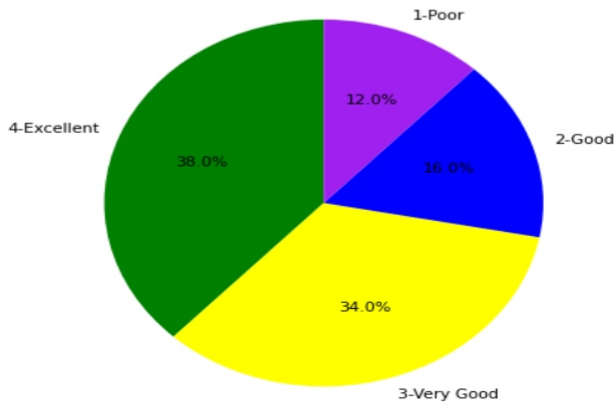
17. Sports facility

4-Excellent: [17] = (35.42%) 3-Very Good: [15] = (31.25%) 2-Good: [13] = (27.08%) 1-Poor: [3] = (6.25%)



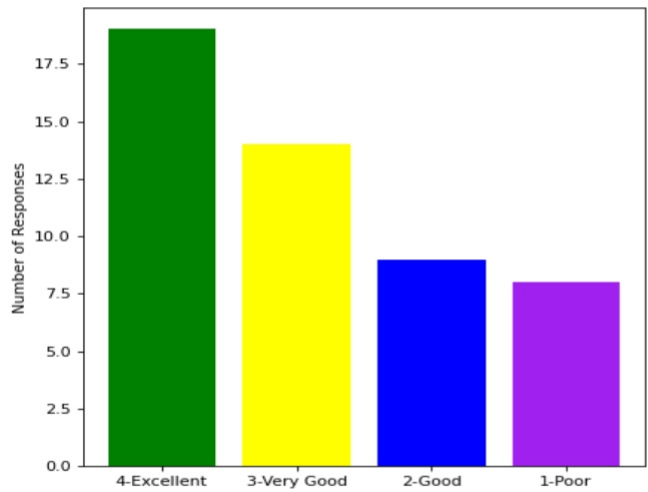
18. Water facility

4-Excellent: [19] = (38.0%) 3-Very Good: [17] = (34.0%) 2-Good: [8] = (16.0%) 1-Poor: [6] = (12.0%)



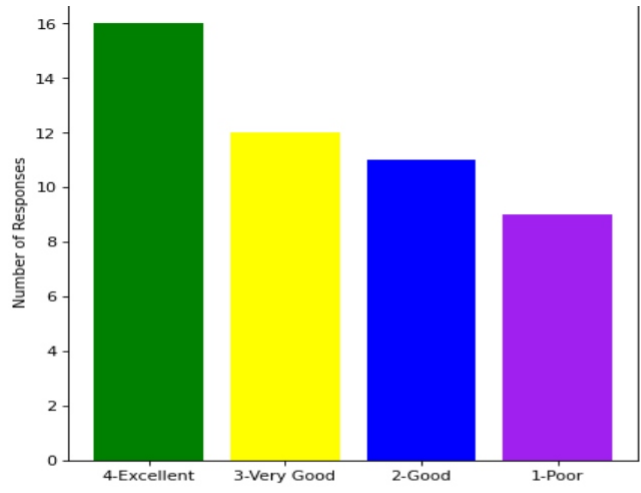
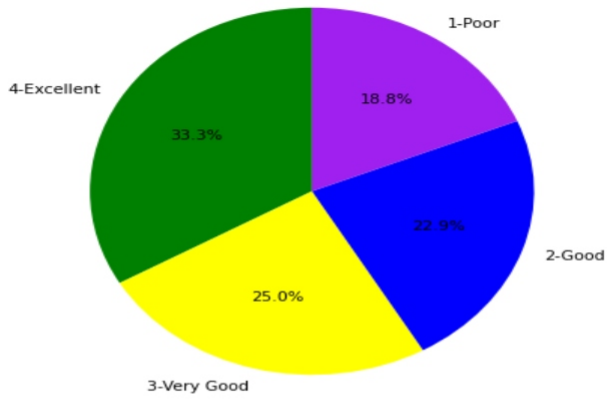
19. Cleanliness and Hygiene

4-Excellent: [19] = (38.0%) 3-Very Good: [14] = (28.0%) 2-Good: [9] = (18.0%) 1-Poor: [8] = (16.0%)



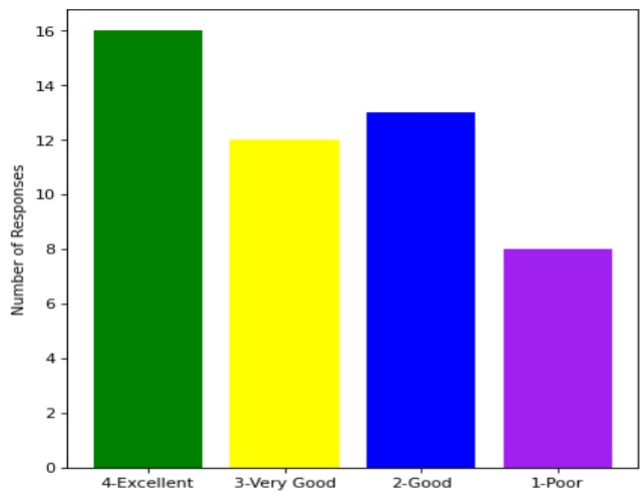
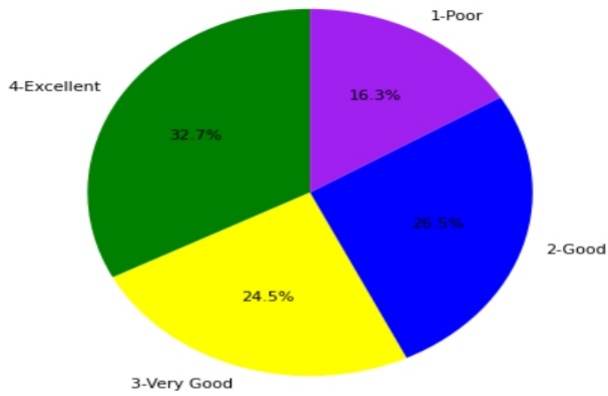
20. Canteen facility

4-Excellent: [16] = (33.33%) 3-Very Good: [12] = (25.0%) 2-Good: [11] = (22.92%) 1-Poor: [9] = (18.75%)



21. Internet facility

4-Excellent: [16] = (32.65%) 3-Very Good: [12] = (24.49%) 2-Good: [13] = (26.53%) 1-Poor: [8] = (16.33%)



This is a computer generated statement and does not require a signature.