



Semester End Survey

Academic Year: 2024-25

Department: CE

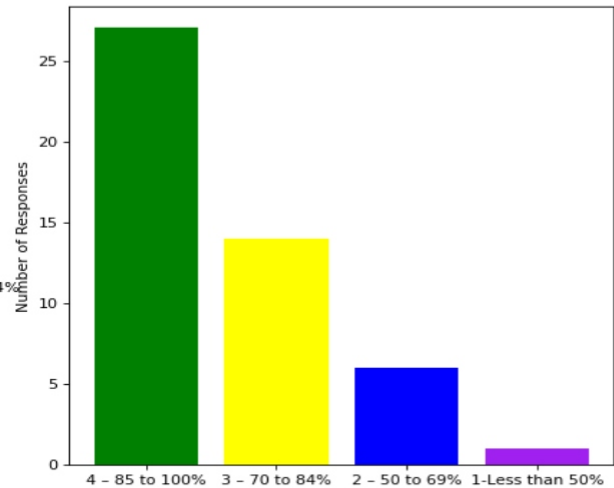
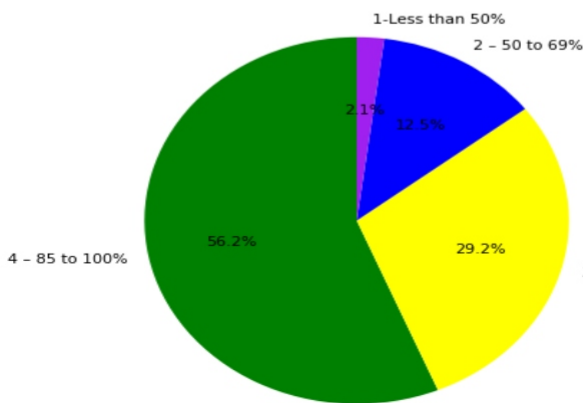
Semester: EIGHTH

Total number of students participated in the survey: 47

Feedback on Academics

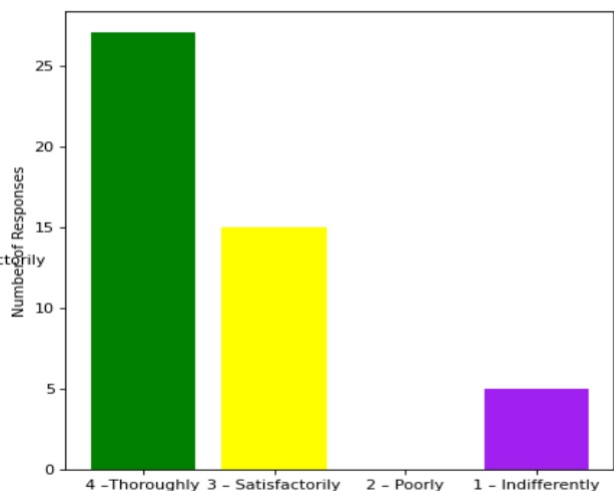
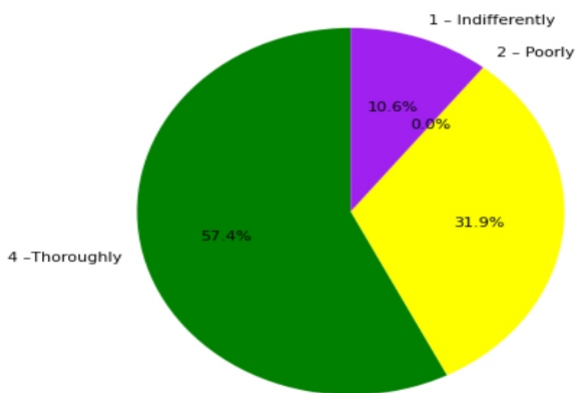
1. The overall syllabus coverage in the class is to an extent of

4 – 85 to 100%: [27] = (56.25%) 3 – 70 to 84%: [14] = (29.17%) 2 – 50 to 69%: [6] = (12.5%) 1-Less than 50%: [1] = (2.08%)



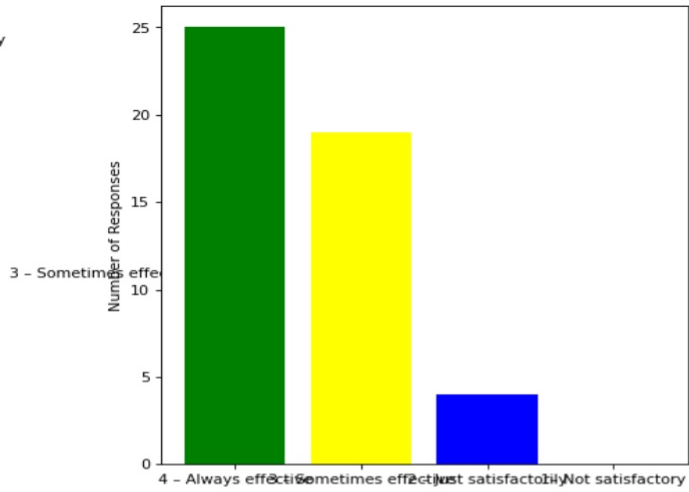
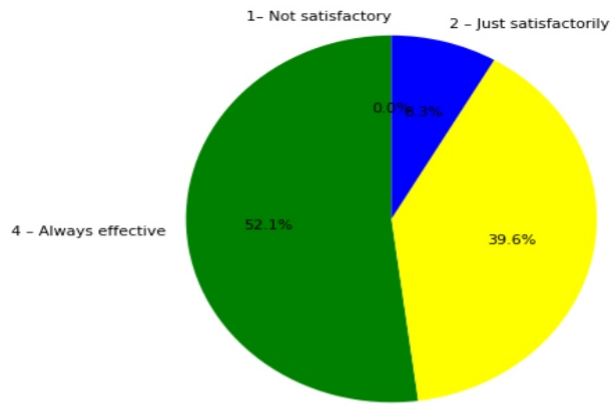
2. Teachers are prepared for the classes

4 –Thoroughly: [27] = (57.45%) 3 – Satisfactorily: [15] = (31.91%) 2 – Poorly: [0] = (0.0%) 1 – Indifferently: [5] = (10.64%)



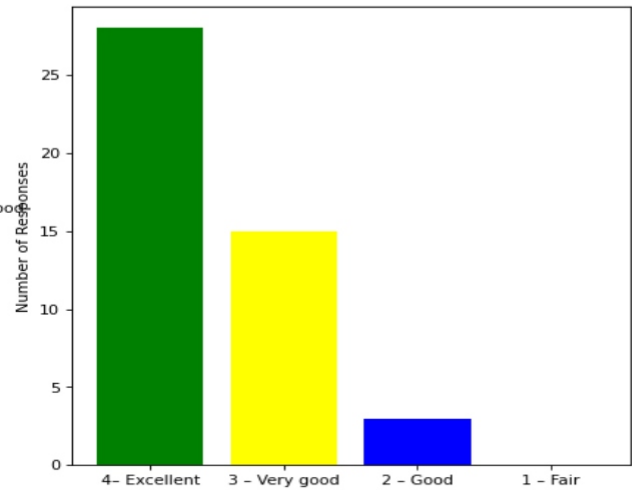
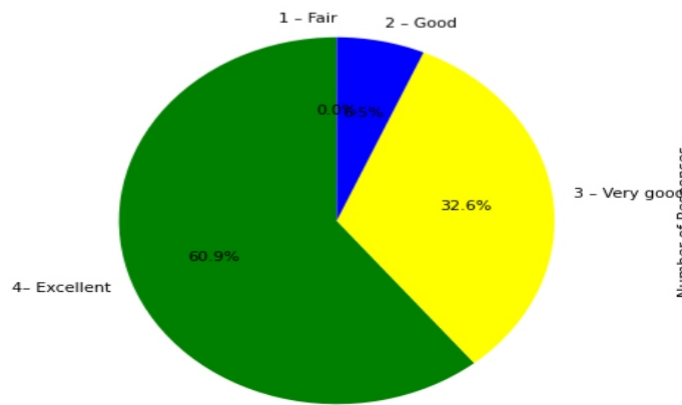
3. Communication of the teachers in the class and outside the class is

4 – Always effective: [25] = (52.08%) 3 – Sometimes effective: [19] = (39.58%) 2 – Just satisfactorily: [4] = (8.33%) 1 – Not satisfactory: [0] = (0.0%)



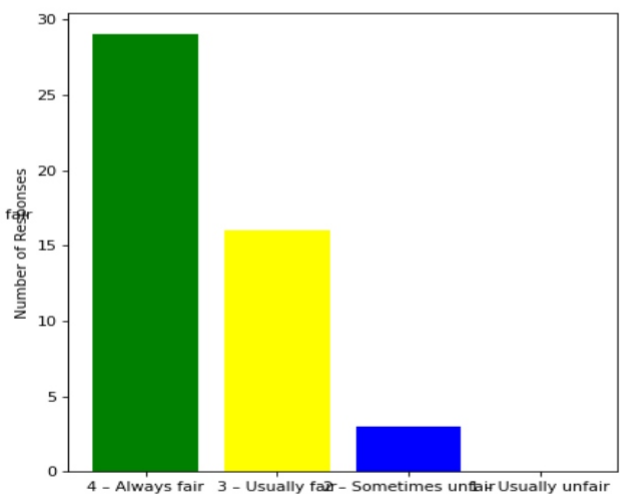
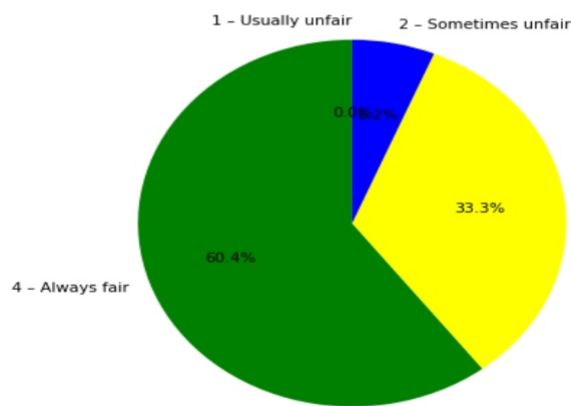
4. Overall learning environment in the classes and laboratories is

4 - Excellent: [28] = (60.87%) 3 - Very good: [15] = (32.61%) 2 - Good: [3] = (6.52%) 1 - Fair: [0] = (0.0%)



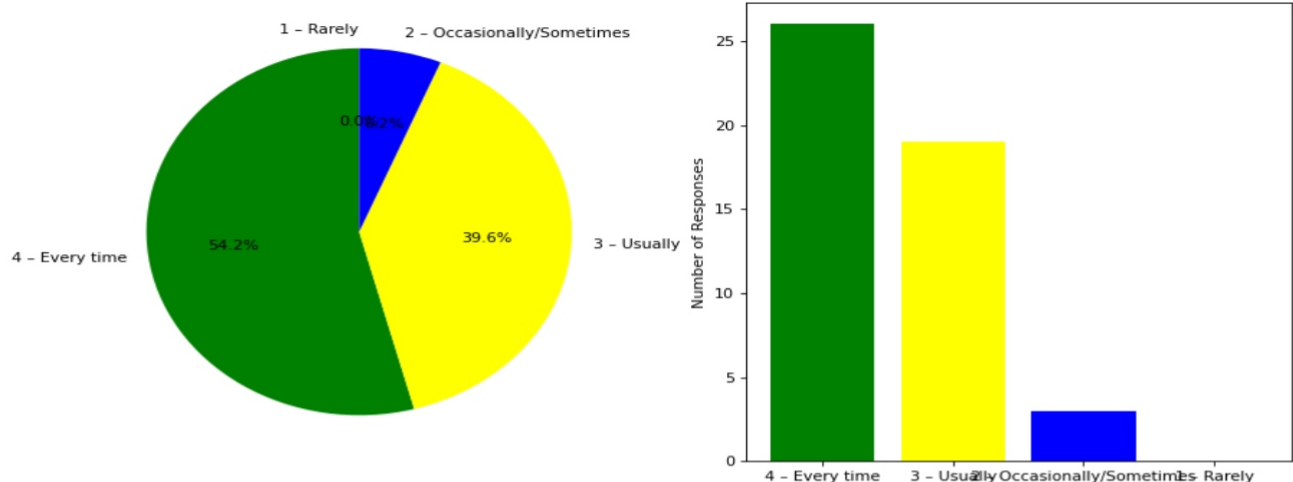
5. Fairness of the internal evaluation process by the teachers is

4 - Always fair: [29] = (60.42%) 3 - Usually fair: [16] = (33.33%) 2 - Sometimes unfair: [3] = (6.25%) 1 - Usually unfair: [0] = (0.0%)



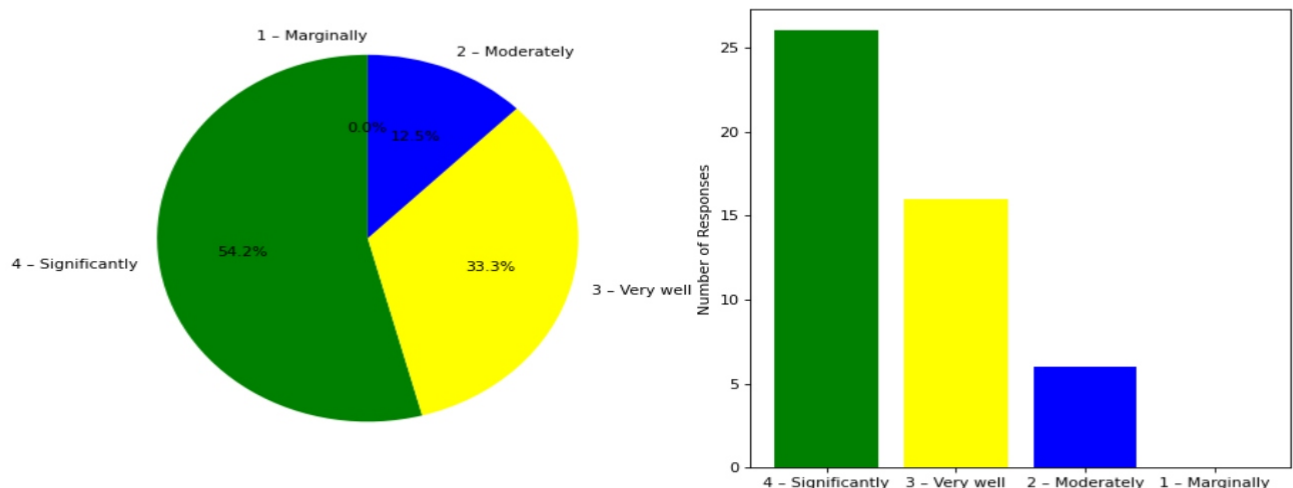
6. The performance in internal evaluations and laboratory experimentation is discussed with the students

4 – Every time: [26] = (54.17%) 3 – Usually: [19] = (39.58%) 2 – Occasionally/Sometimes: [3] = (6.25%) 1 – Rarely: [0] = (0.0%)



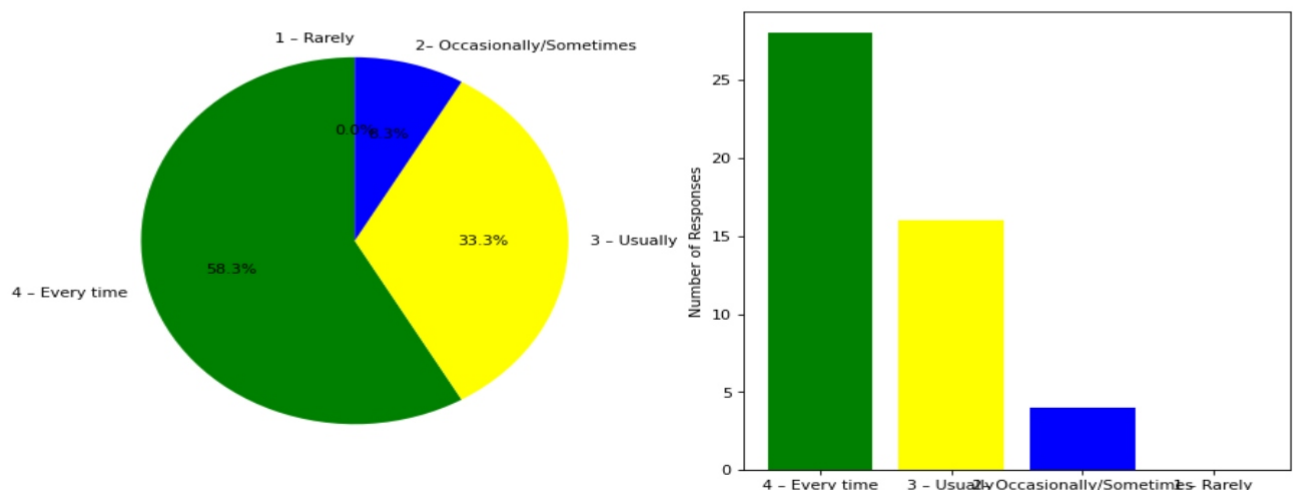
7. The teaching and mentoring process in the department supports the development of your cognitive, social, and emotional growth

4 – Significantly: [26] = (54.17%) 3 – Very well: [16] = (33.33%) 2 – Moderately: [6] = (12.5%) 1 – Marginally: [0] = (0.0%)



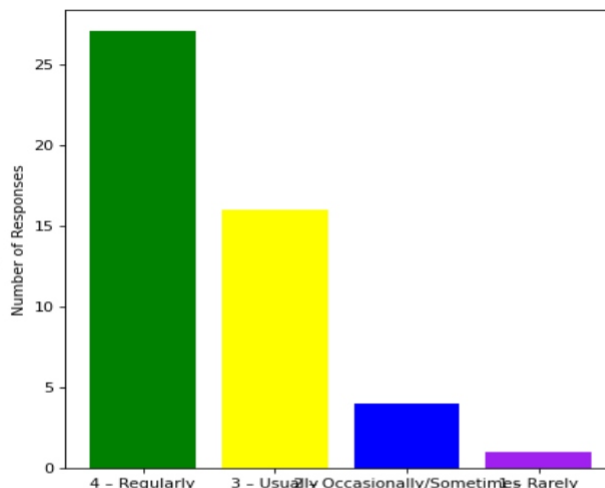
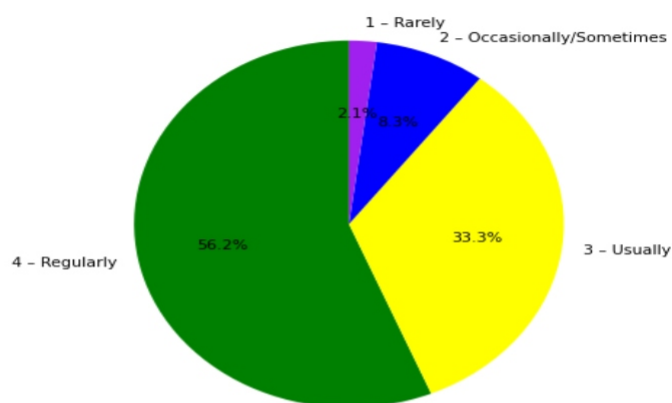
8. Teachers inform students about expected competencies, course outcomes , programme outcomes and overall system of outcome based education(OBE)

4 – Every time: [28] = (58.33%) 3 – Usually: [16] = (33.33%) 2– Occasionally/Sometimes: [4] = (8.33%) 1 – Rarely: [0] = (0.0%)



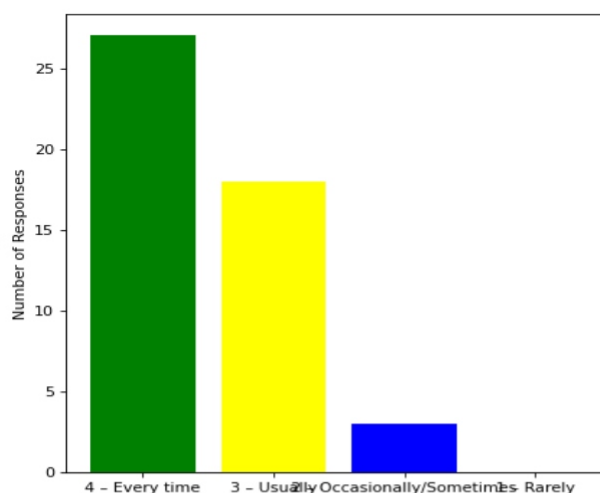
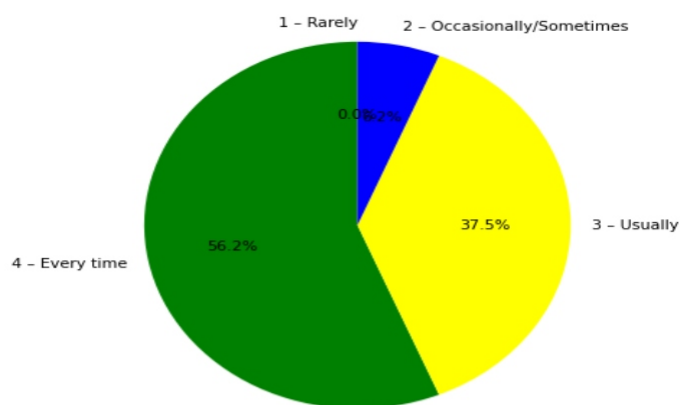
9. Your mentor interacts with you to encourage on your strengths and counsel you to overcome your weakness by identifying them

4 – Regularly: [27] = (56.25%) 3 – Usually: [16] = (33.33%) 2 – Occasionally/Sometimes: [4] = (8.33%) 1 – Rarely: [1] = (2.08%)



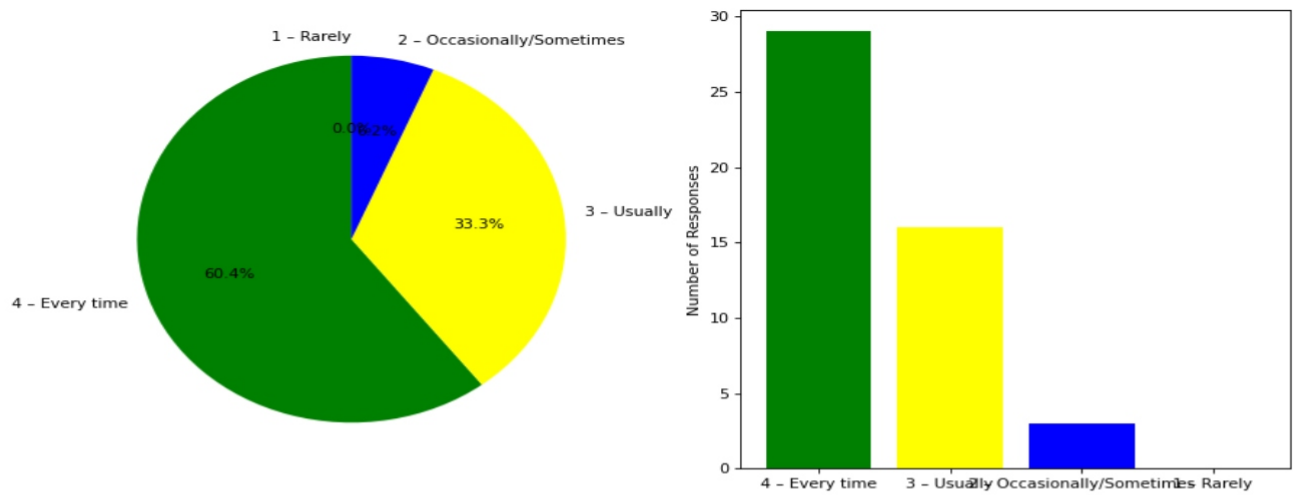
10. The teachers illustrate the concepts through examples and applications and use student centric methods, such as experiential learning, participative learning and problem solving methodologies for enhancing learning experiences

4 – Every time: [27] = (56.25%) 3 – Usually: [18] = (37.5%) 2 – Occasionally/Sometimes: [3] = (6.25%) 1 – Rarely: [0] = (0.0%)



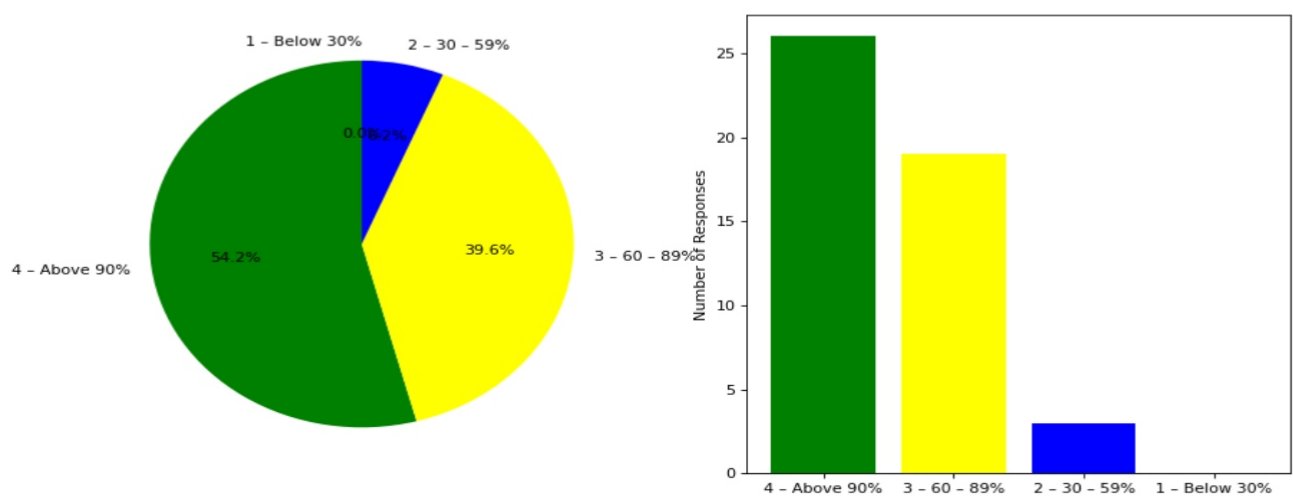
11. The institute takes active interest in promoting internship, field visit, organizes workshop/seminar/extracurricular/co-curricular activities and helps to inculcate soft skills, life skills and employability skills for the holistic development of the students

4 – Every time: [29] = (60.42%) 3 – Usually: [16] = (33.33%) 2 – Occasionally/Sometimes: [3] = (6.25%) 1 – Rarely: [0] = (0.0%)



12. Percentage of teachers using ICT tools such as LCD projector, Multimedia, etc. while teaching

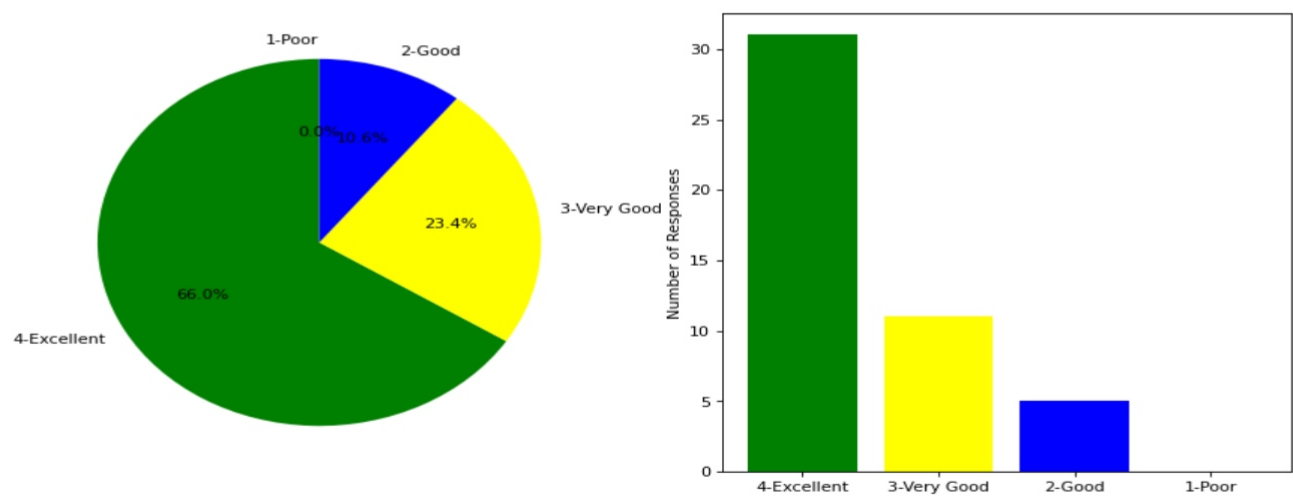
4 - Above 90%: [26] = (54.17%) 3 - 60 - 89%: [19] = (39.58%) 2 - 30 - 59%: [3] = (6.25%) 1 - Below 30%: [0] = (0.0%)



Feedback on Facilities

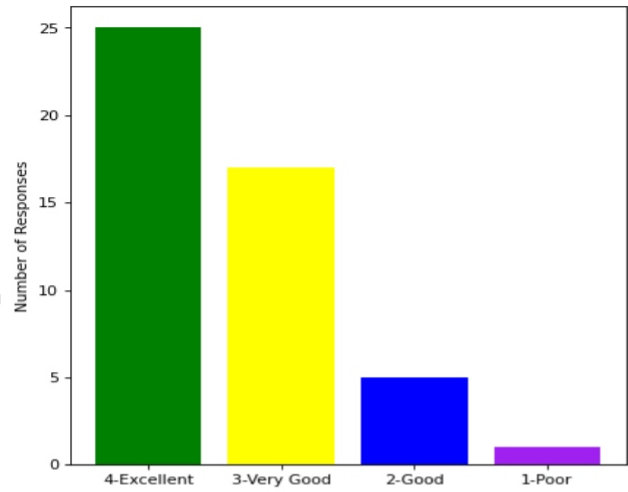
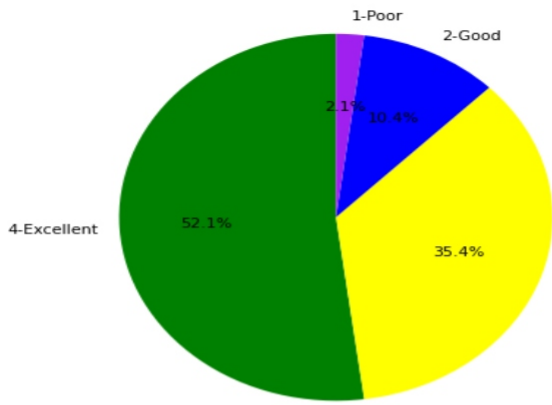
13. Class room facility

4-Excellent: [31] = (65.96%) 3-Very Good: [11] = (23.4%) 2-Good: [5] = (10.64%) 1-Poor: [0] = (0.0%)



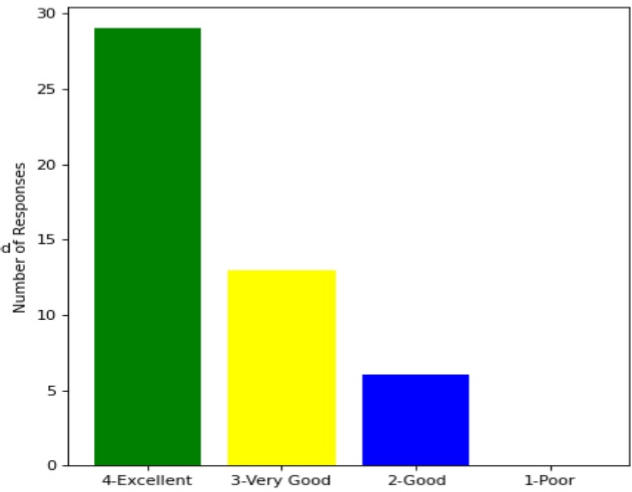
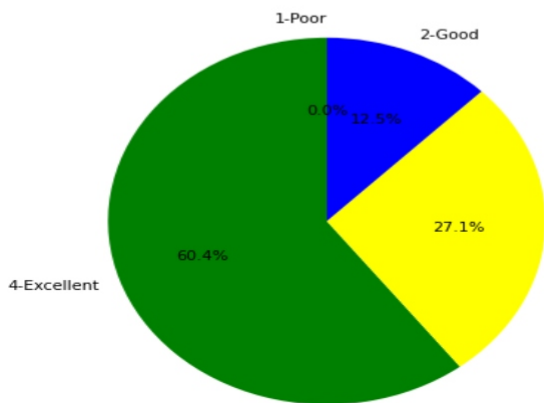
14. Laboratory facility

4-Excellent: [25] = (52.08%) 3-Very Good: [17] = (35.42%) 2-Good: [5] = (10.42%) 1-Poor: [1] = (2.08%)



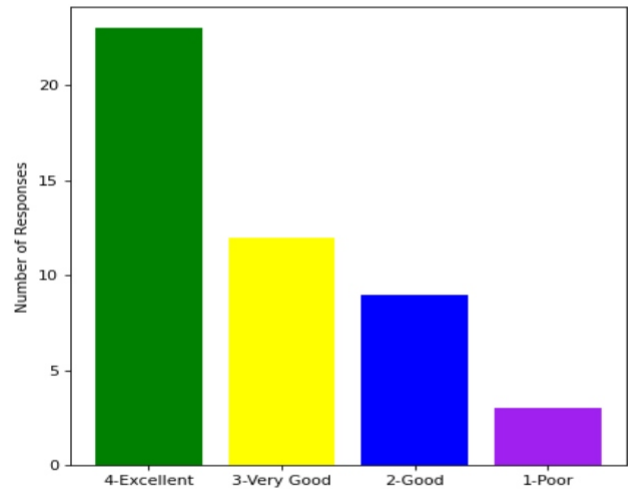
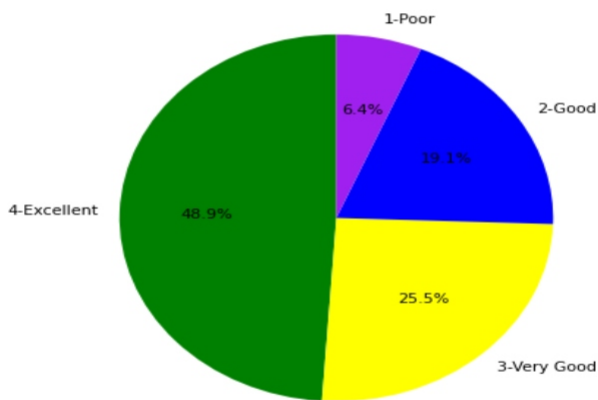
15. Library facility

4-Excellent: [29] = (60.42%) 3-Very Good: [13] = (27.08%) 2-Good: [6] = (12.5%) 1-Poor: [0] = (0.0%)



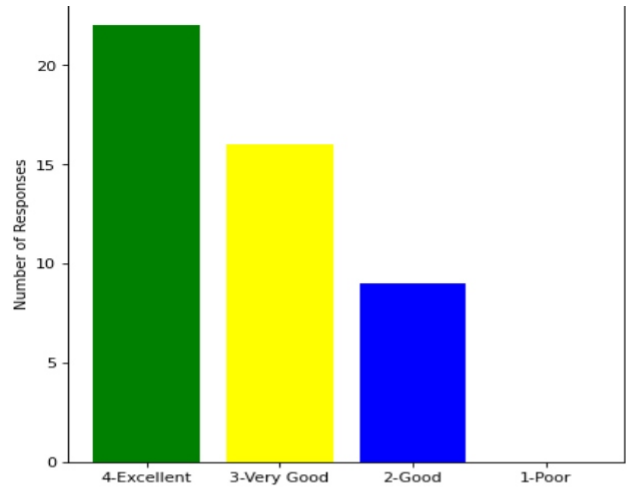
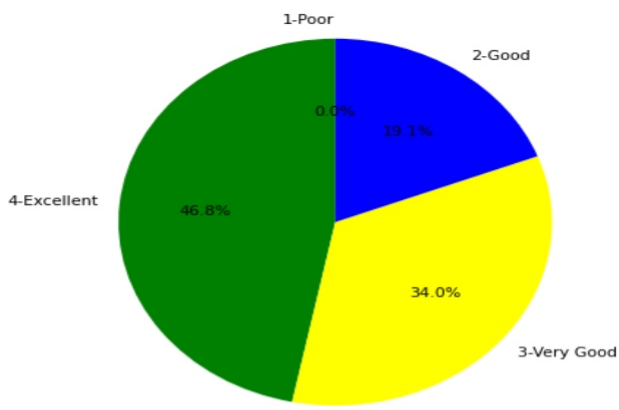
16. Hostel facility

4-Excellent: [23] = (48.94%) 3-Very Good: [12] = (25.53%) 2-Good: [9] = (19.15%) 1-Poor: [3] = (6.38%)



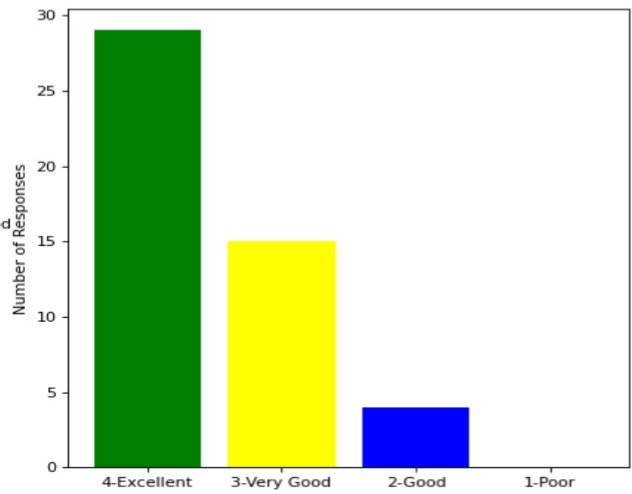
17. Sports facility

4-Excellent: [22] = (46.81%) 3-Very Good: [16] = (34.04%) 2-Good: [9] = (19.15%) 1-Poor: [0] = (0.0%)



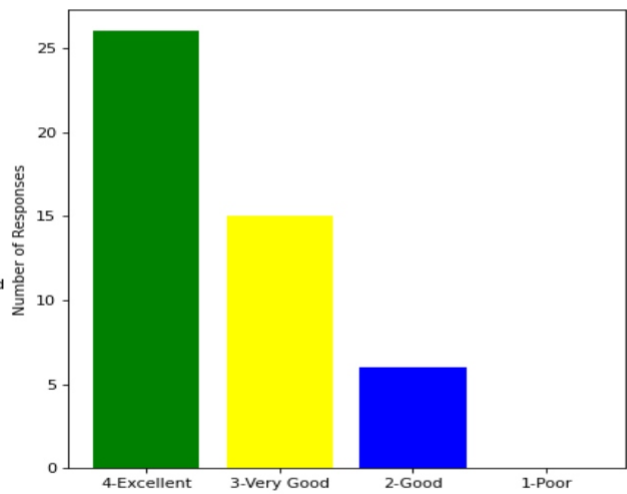
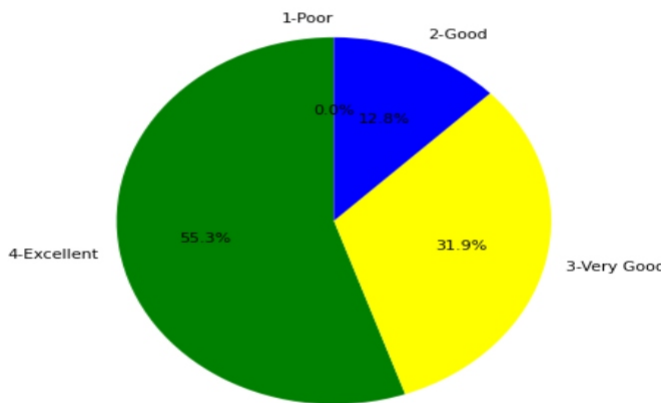
18. Water facility

4-Excellent: [29] = (60.42%) 3-Very Good: [15] = (31.25%) 2-Good: [4] = (8.33%) 1-Poor: [0] = (0.0%)



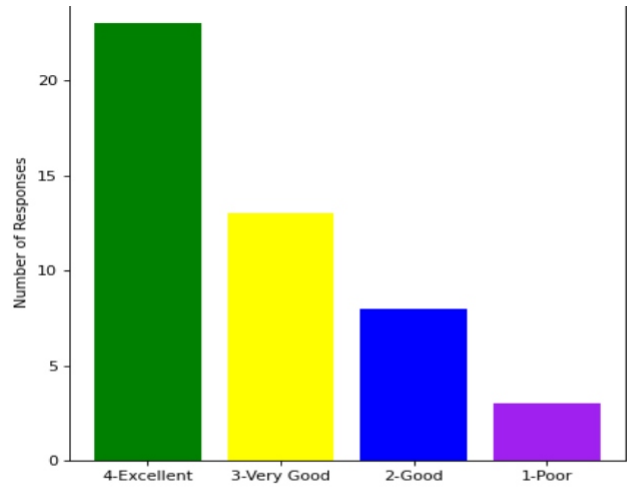
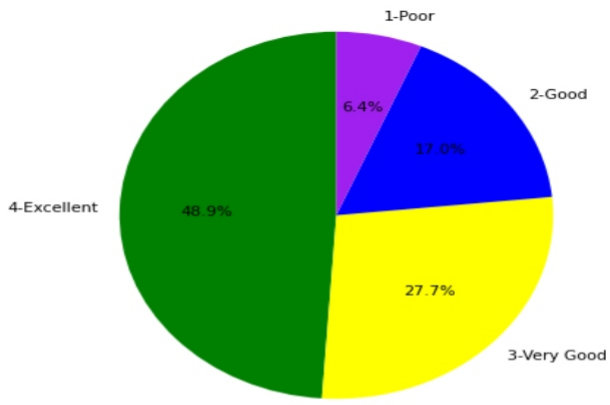
19. Cleanliness and Hygiene

4-Excellent: [26] = (55.32%) 3-Very Good: [15] = (31.91%) 2-Good: [6] = (12.77%) 1-Poor: [0] = (0.0%)



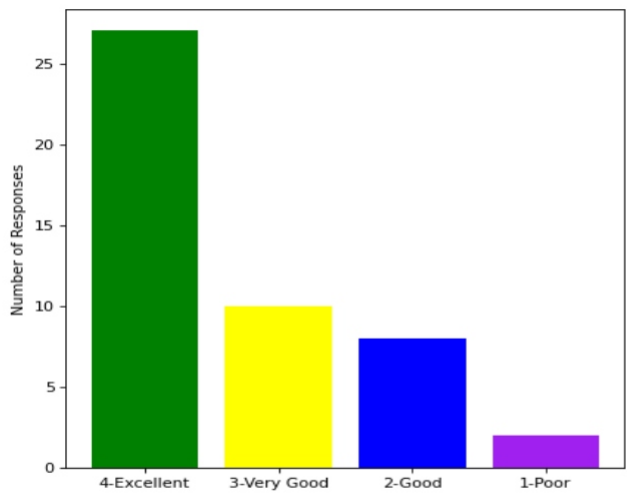
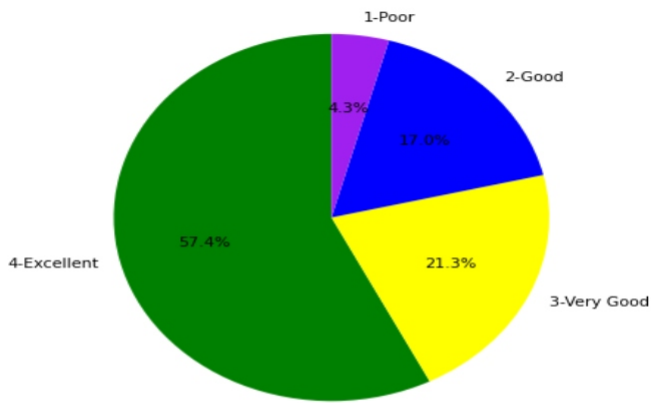
20. Canteen facility

4-Excellent: [23] = (48.94%) 3-Very Good: [13] = (27.66%) 2-Good: [8] = (17.02%) 1-Poor: [3] = (6.38%)



21. Internet facility

4-Excellent: [27] = (57.45%) 3-Very Good: [10] = (21.28%) 2-Good: [8] = (17.02%) 1-Poor: [2] = (4.26%)



This is a computer generated statement and does not require a signature.